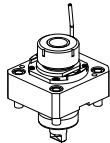

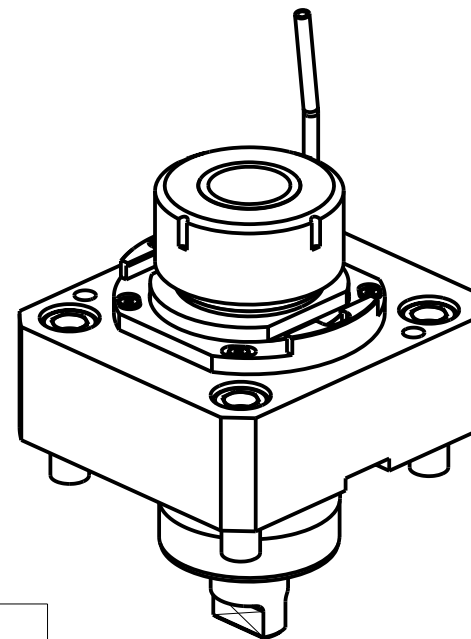
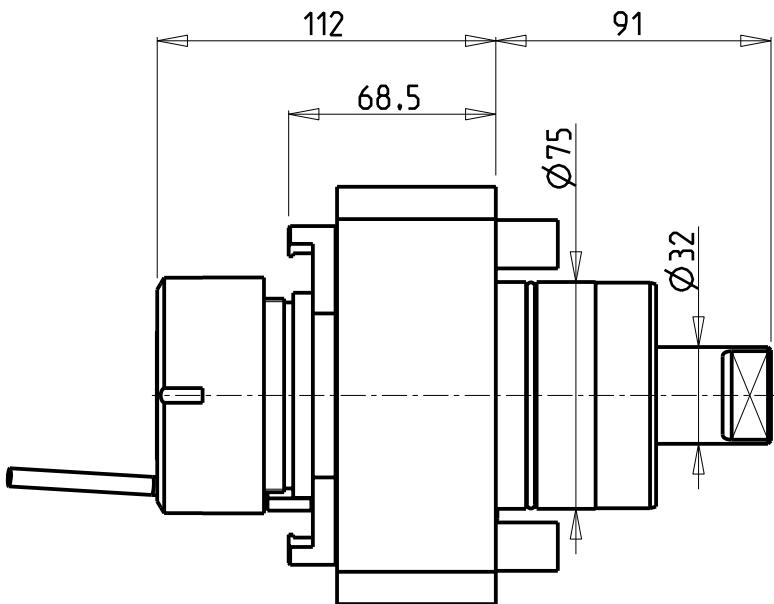
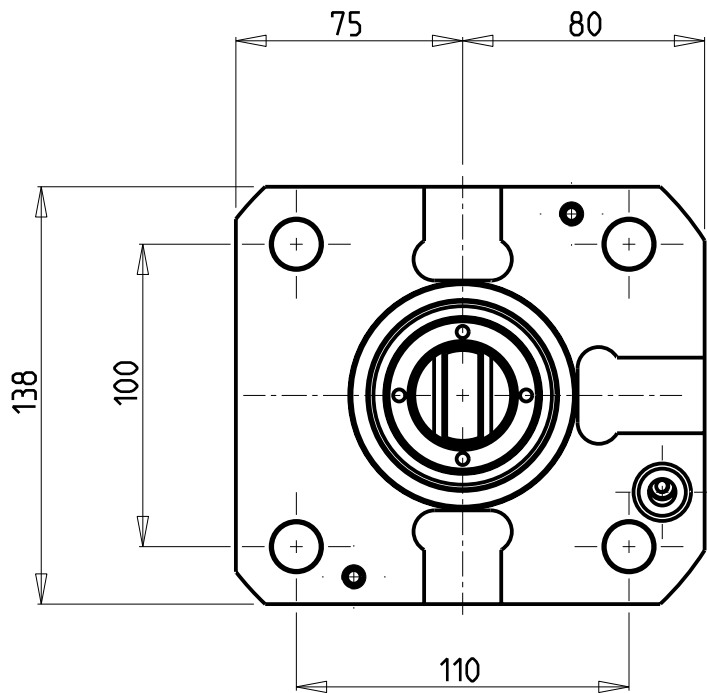


		PAGINA Page Seite
<b>MODULO MOTORIZZATO RADIALE</b> Radial driven tool Radial angetriebenes Werkzeug		NZL010.2.00
<b>MODULO MOTORIZZATO ASSIALE</b> Axial driven tool Axial angetriebenes Werkzeug		NZL150.2.10

Distributeur/ importateur : Crylax 0033 450 960920 - [info@crylax.com](mailto:info@crylax.com)



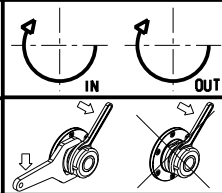
- Chiave inclusa
- Key included
- Schluessel inbegriffen

Cod. MT	Mandrino Spindle Spindel	I	RPM	Coppia Max Max Torque Max Drehmoment	Lubrificazione est. Ext. coolant Aussenkuehlung	CHIAVI NON INCLUSE Keys not included Schluessel nicht einbegriffen	
NZL0060150	ER50	1:1	8000	150Nm	X	CHSTER50	NZL0010023 ■

DMG-MORI  
MOD: NLX6000 - NZX4000

MODULO MOTORIZZATO RADIALE  
Radial driven tool  
Radial angetriebenes Werkzeug

Subject to change without notice.

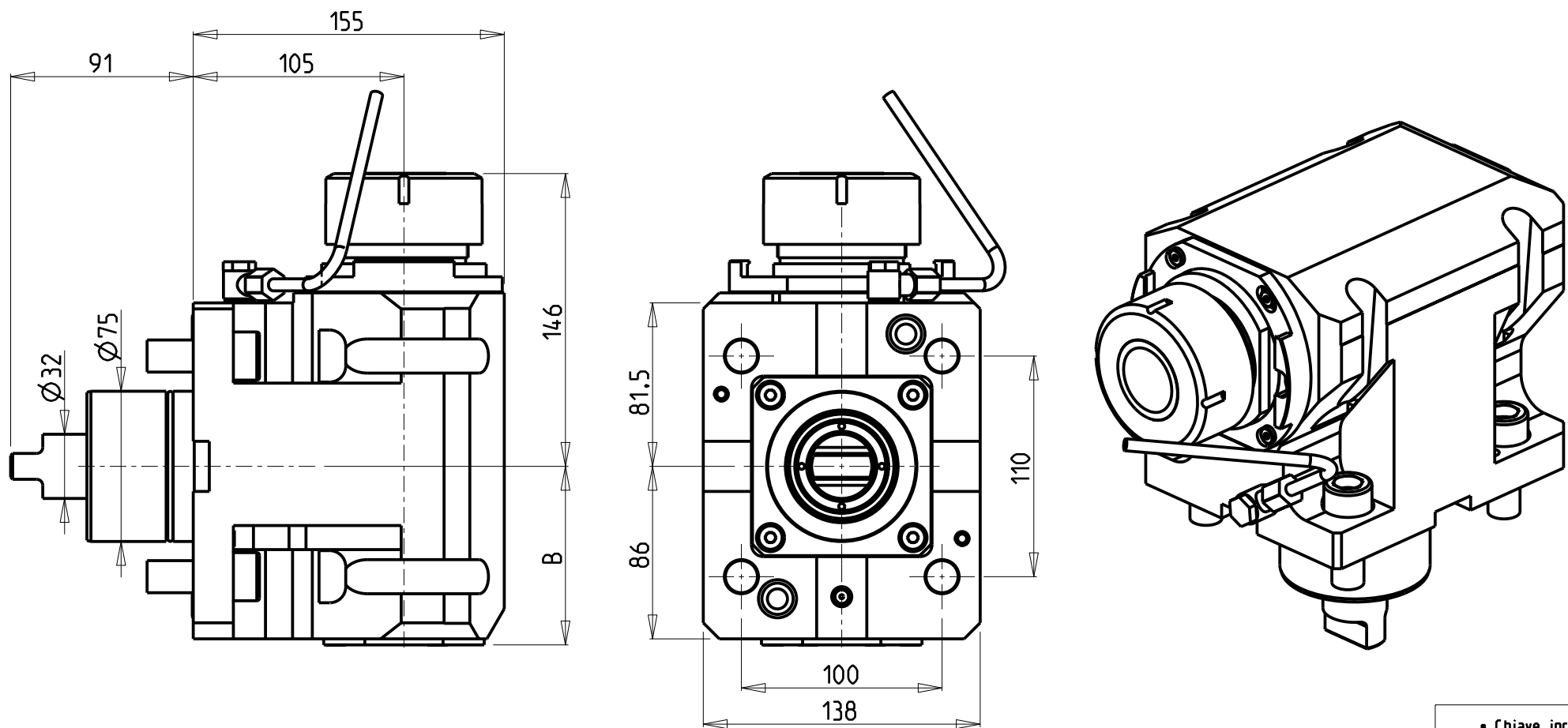


**M.T. srl**  
Via Casino Albini 480  
Tel. 0541/956034-957884  
Fax 0541/956341  
47842 S. GIOVANNI IN M. (RN)  
e-mail: [mtma@mtmarchetti.com](mailto:mtma@mtmarchetti.com)  
<http://www.mtmarchetti.com>

PRODUZIONE MODULI ROTANTI



PAGINA NZL010-2-00



Cod. MT	Mandrino Spindle Spindel	I	RPM	Coppia Max Max Torque Max Drehmoment	Reversibile lato mandrino/contromandrino Reversible sub/main spindle side Umkehrbare Spindel-seite/ Gegenspindel-seite	Lubrificazione int. Coolant through Innenkuehlung	Lubrificazione est. Ext. coolant Aussenkuehlung	B	CHIAVI NON INCLUSE Keys not included Schluessel nicht einbegriffen	
NZL0070150	ER50	1:1	8000	150Nm	X	-	X	89	CHSTER50	NZL0010023 •
NZL0070250	ER50	1:1	8000	150Nm	X	P=70bar	X	105.5	CHSTER50	NZL0010023 •

- Chiave inclusa
- Key included
- Schluessel inbegriffen

DMG-MORI

MOD: NLX6000 - NZX4000

MODULO MOTORIZZATO ASSIALE H=105mm

Axial driven tool H=105mm

Axial angetriebenes Werkzeug H=105mm



M.T. srl

Via Casino Albini 480

Tel. 0541/956034-957884


Fax 0541/956341

47842 S. GIOVANNI IN M. (RN)

e-mail: [mtma@mtmarchetti.com](mailto:mtma@mtmarchetti.com)

<http://www.mtmarchetti.com>

PRODUZIONE MODULI ROTANTI



PAGINA NZL150-2-10