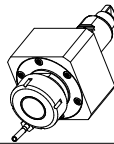
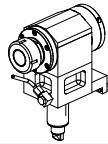
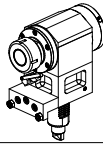
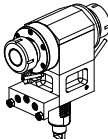
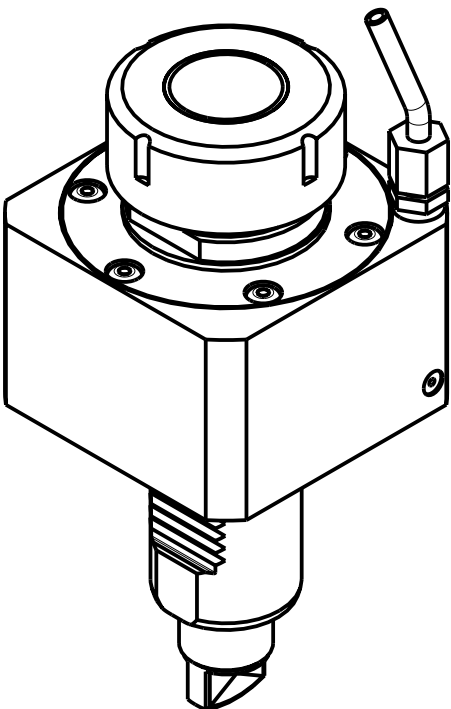
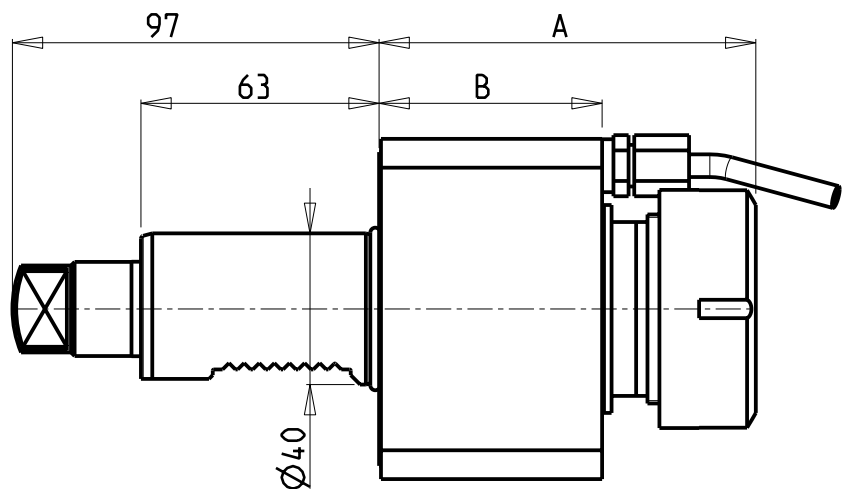
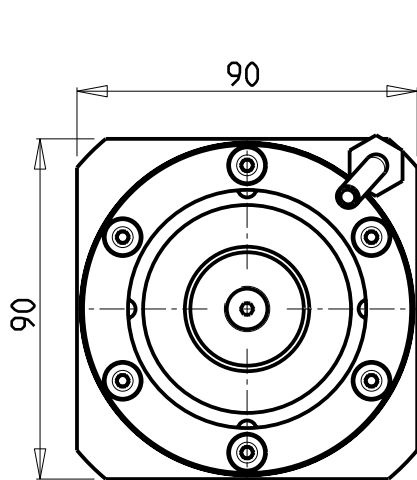


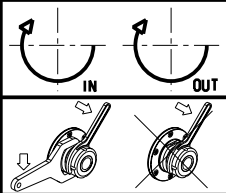
		PAGINA Page Seite
MODULO MOTORIZZATO RADIALE Radial driven tool Radial angetriebenes Werkzeug		MZT010.2.00
MODULO MOTORIZZATO ASSIALE Axial driven tool Axial angetriebenes Werkzeug		MZT150.2.10
MODULO MOTORIZZATO ASSIALE PER CONTROMANDRINO Axial driven tool sub spindle side Axial angetriebenes Werkzeug fuer Gegenspindel		MZT155.2.10
MODULO MOTORIZZATO ASSIALE BISPORGENTE Axial opposite face driven tool Axial angetriebenes Werkzeug halb vorspringend		MZT240.2.10

Distributeur/ importateur : Crylax 0033 450 960920 - info@crylax.com



Cod. MT	Mandrino Spindle Spindel	I	RPM	Coppia Max Max Torque Max Drehmoment	Lubrificazione int. Coolant through Innenkühlung	Lubrificazione est. Ext. coolant Aussenkühlung	A	B	CHIAVI NON INCLUSE Keys not included Schlüssel nicht einbegriffen	
MMT0020140	ER40	1:1	6000	70Nm		X	99.66	59	CHUB46	CHSTER40
MMT0020240	ER40	1:1	6000	70Nm	P=30bar	X	112.66	72	CHUB46	CHSTER40

DMG-MORI
MOD: MT2000/2500 - ZT2500
MODULO MOTORIZZATO RADIALE
Radial driven tool
Radial angetriebenes Werkzeug
Subject to change without notice.

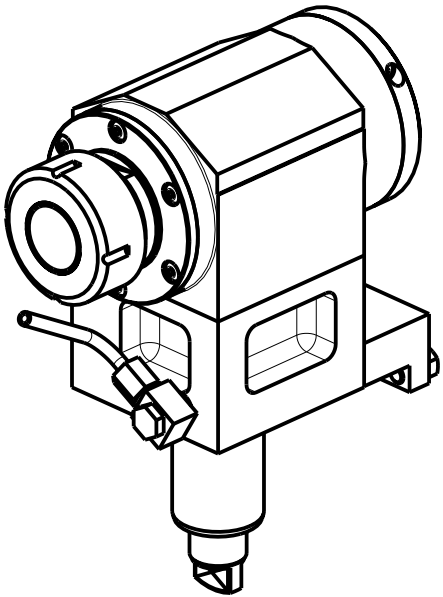
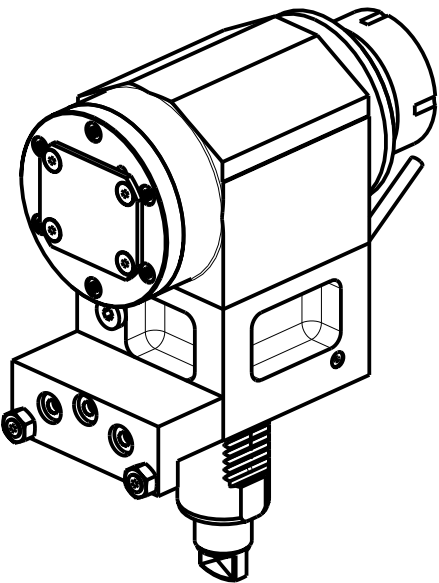
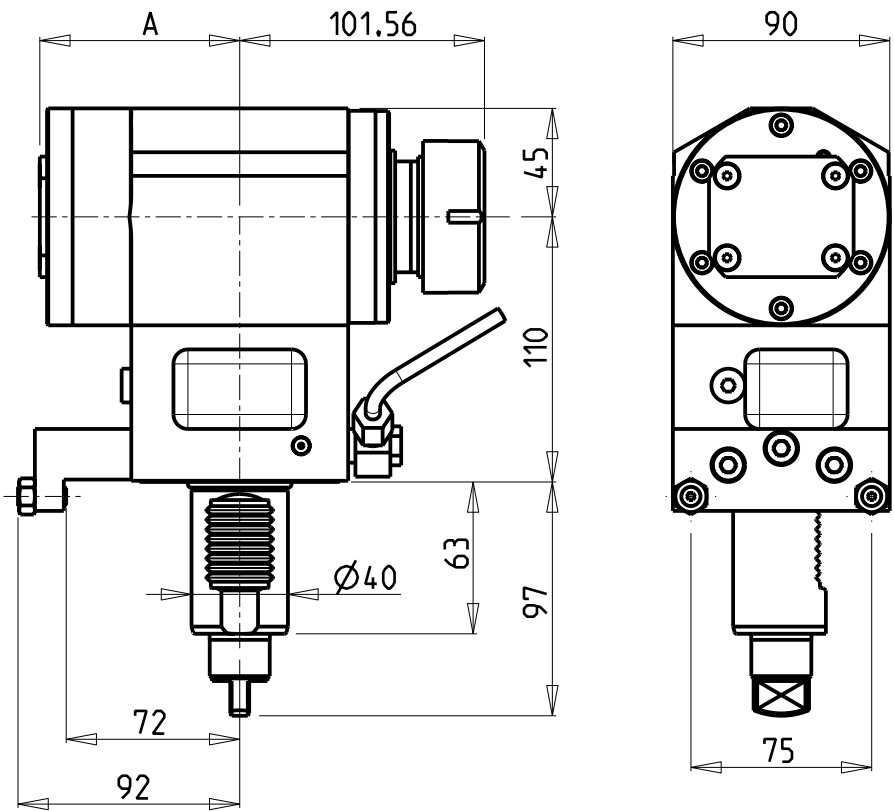


M.T. srl
Via Casino Albini 480
Tel. 0541/956034-957884
Fax 0541/956341
47842 S. GIOVANNI IN M. (RN)
e-mail: mtma@mtmarchetti.com
<http://www.mtmarchetti.com>

PRODUZIONE MODULI ROTANTI



PAGINA MZT010-2-00



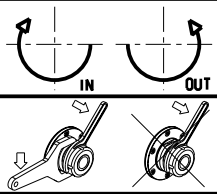
ATTENZIONE - ATTENTION - ACHTUNG

- Per lo smontaggio degli utensili utilizzare sempre la chiave di contrasto come indicato nel manuale d'uso.
- For disassembly of the tools use always the contrast key as mentioned in the user instructions.
- Fuer das Abmontieren der Werkzeuge immer den Gegenschlüssel benutzen wie in der Bedienungsanleitung erwaeht.

Cod. MT	Mandrino Spindle Spindel	I	RPM	Coppia Max Max Torque Max Drehmoment	Lubrificazione int. Coolant through Innenkuehlung	Lubrificazione est. Ext. coolant Aussenkuehlung	A	CHIAVI NON INCLUSE Keys not included Schlüssel nicht einbegriffen	
MMT0010140	ER40	1:1	6000	70Nm		X	82.95	CHUB46	CHSTER40
MMT0010340	ER40	1:1	6000	70Nm	P=70bar	X	106.45	CHUB46	CHSTER40

DMG-MORI
MOD: MT2000/2500 - ZT2500
MODULO MOTORIZZATO ASSIALE
Axial driven tool
Axial angetriebenes Werkzeug

Subject to change without notice.

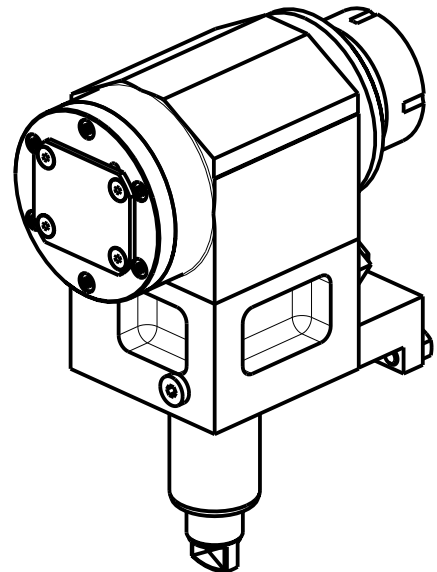
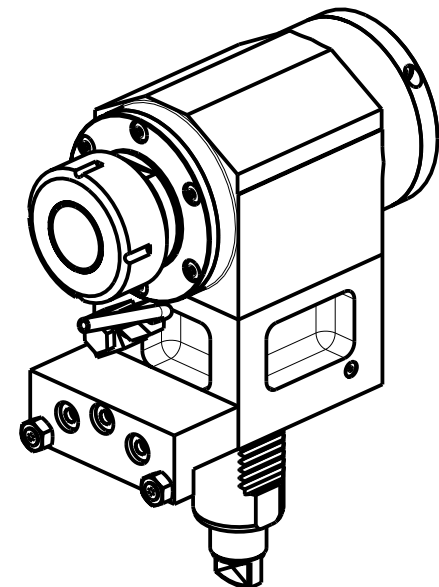
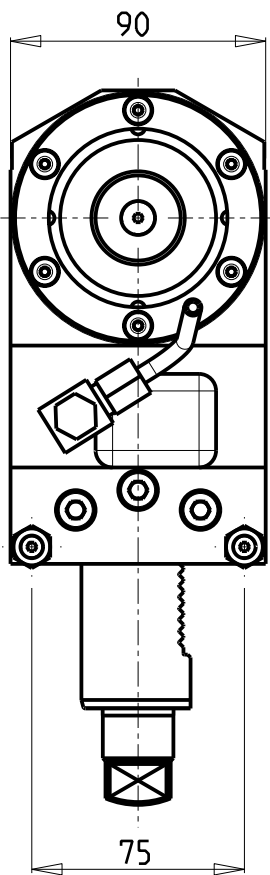
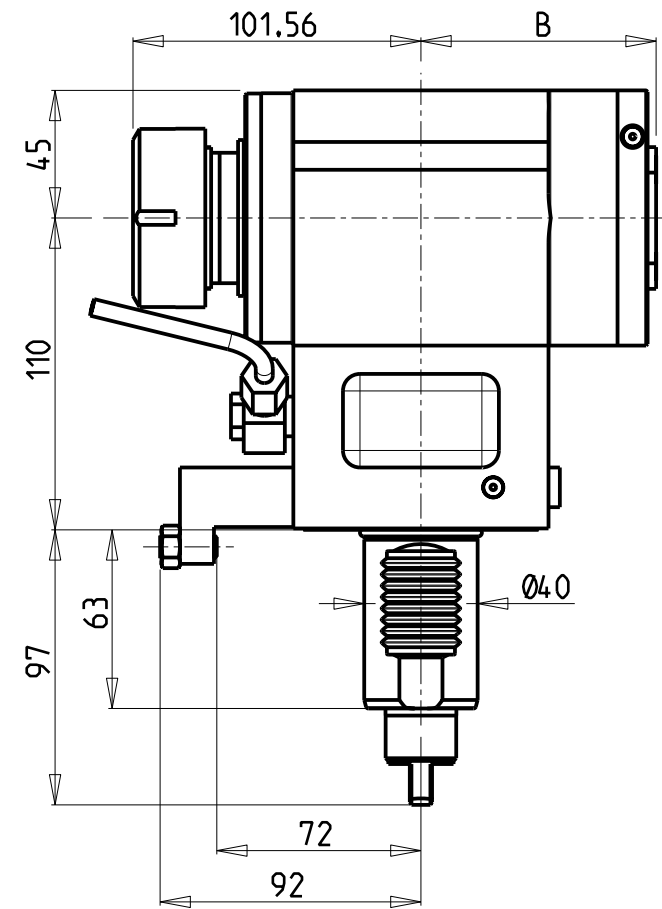


M.T. srl
Via Casino Albini 480
Tel. 0541/956034-957884
Fax 0541/956341
47842 S. GIOVANNI IN M. (RN)
e-mail: mtma@mtmarchetti.com
<http://www.mtmarchetti.com>

PRODUZIONE MODULI ROTANTI



PAGINA MZT150-2-10



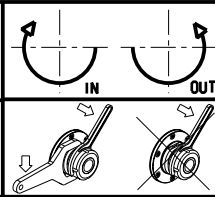
ATTENZIONE - ATTENTION - ACHTUNG

- Per lo smontaggio degli utensili utilizzare sempre la chiave di contrasto come indicato nel manuale d'uso.
- For disassembly of the tools use always the contrast key as mentioned in the user instructions.
- Fuer das Abmontieren der Werkzeuge immer den Gegenschlüssel benutzen wie in der Bedienungsanleitung erwaeht.

Cod. MT	Mandrino Spindle Spindel	I	RPM	Coppia Max Max Torque Max Drehmoment	Lubrificazione int. Coolant through Innenkuehlung	Lubrificazione est. Ext. coolant Aussenkuehlung	B	CHIAVI NON INCLUSE Keys not included Schluesssel nicht einbegriffen	
MMT0011040	ER40	1:1	6000	70Nm		X	82.95	CHUB46	CHSTER40
MMT0011140	ER40	1:1	6000	70Nm	P=70bar	X	106.45	CHUB46	CHSTER40


DMG-MORI
MOD: MT2000/2500 - ZT2500
MODULO MOTORIZZATO ASSIALE PER CONTROMANDRINO
Axial driven tool sub spindle side
Axial angetriebenes Werkzeug fuer Gegenspindel

Subject to change without notice.

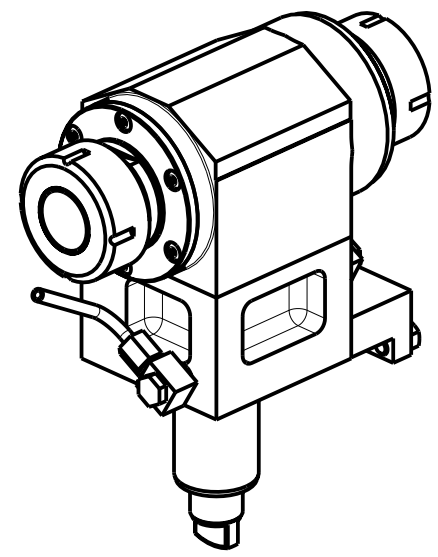
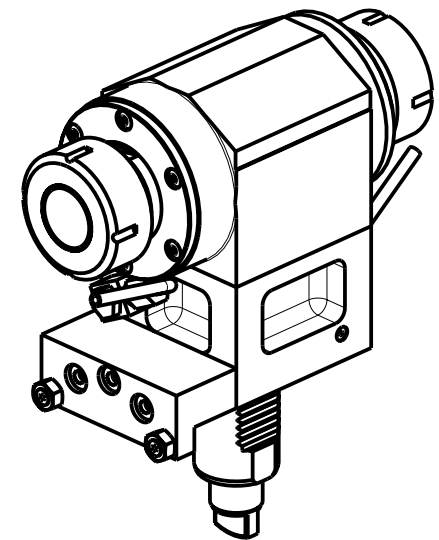
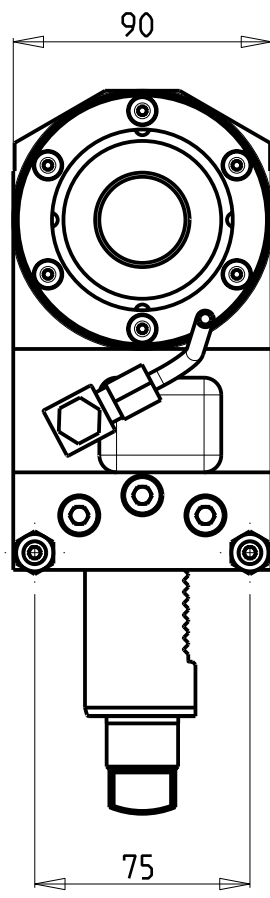
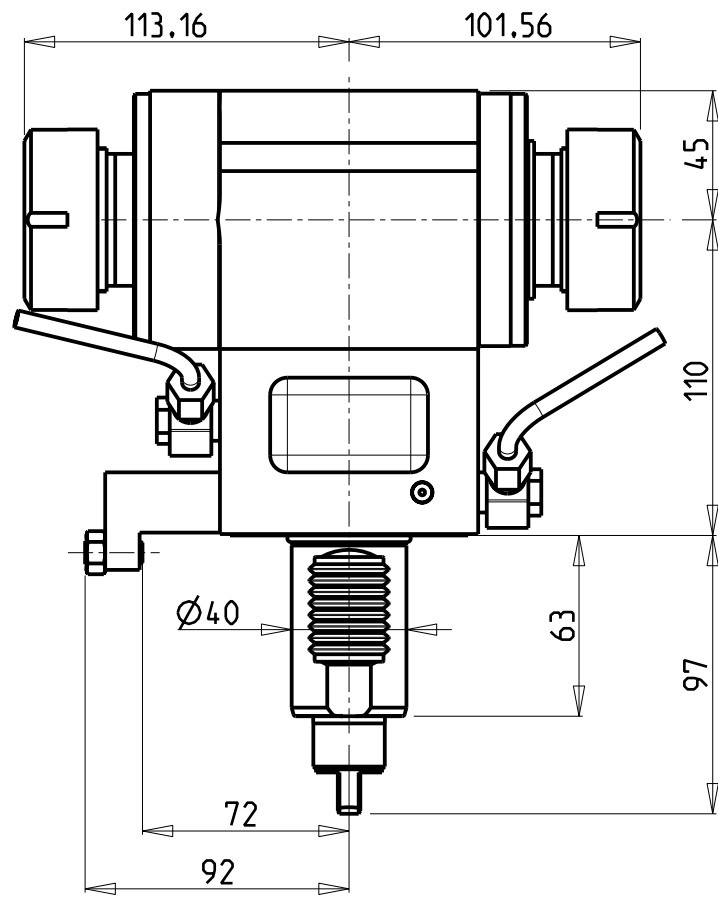


M.T. srl
Via Casino Albini 480
Tel. 0541/956034-957884
Fax 0541/956341
47842 S. GIOVANNI IN M. (RN)
e-mail: mtma@mtmarchetti.com
<http://www.mtmarchetti.com>

PRODUZIONE MODULI ROTANTI



PAGINA MZT155-2-10



ATTENZIONE - ATTENTION - ACHTUNG


- Per lo smontaggio degli utensili utilizzare sempre la chiave di contrasto come indicato nel manuale d'uso.
- For disassembly of the tools use always the contrast key as mentioned in the user instructions.
- Fuer das Abmontieren der Werkzeuge immer den Gegenschlüssel benutzen wie in der Bedienungsanleitung erwaeht.

Cod. MT	Mandrino Spindle Spindel	I	RPM	Coppia Max Max Torque Max Drehmoment	Lubrificazione est. Ext. coolant Aussenkuehlung	CHIAVI NON INCLUSE Keys not included Schlüssel nicht einbegriffen	
MMT0010240	ER40+ER40	1:1	6000	70Nm	X	CHUB46	CHSTER40

DMG-MORI
MOD: MT2000/2500 - ZT2500
MODULO MOTORIZZATO ASSIALE BISPORGENTE
Axial opposite face driven tool
Axial angetriebenes Werkzeug halb vorspringend
Subject to change without notice.

M.T. srl
Via Casino Albini 480
Tel. 0541/956034-957884
Fax 0541/956341
47842 S. GIOVANNI IN M. (RN)
e-mail: mtma@mtmarchetti.com
<http://www.mtmarchetti.com>

PRODUZIONE MODULI ROTANTI



MT

PAGINA MZT240-2-10