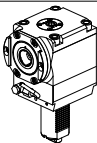
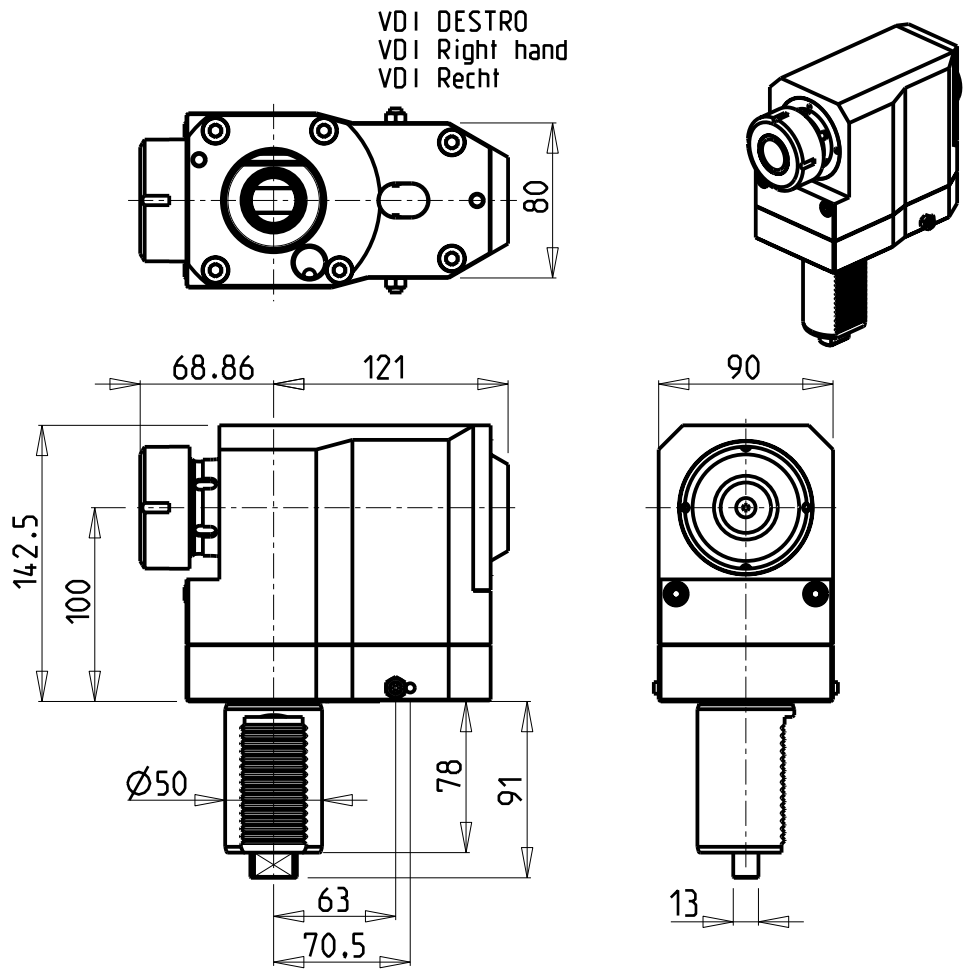
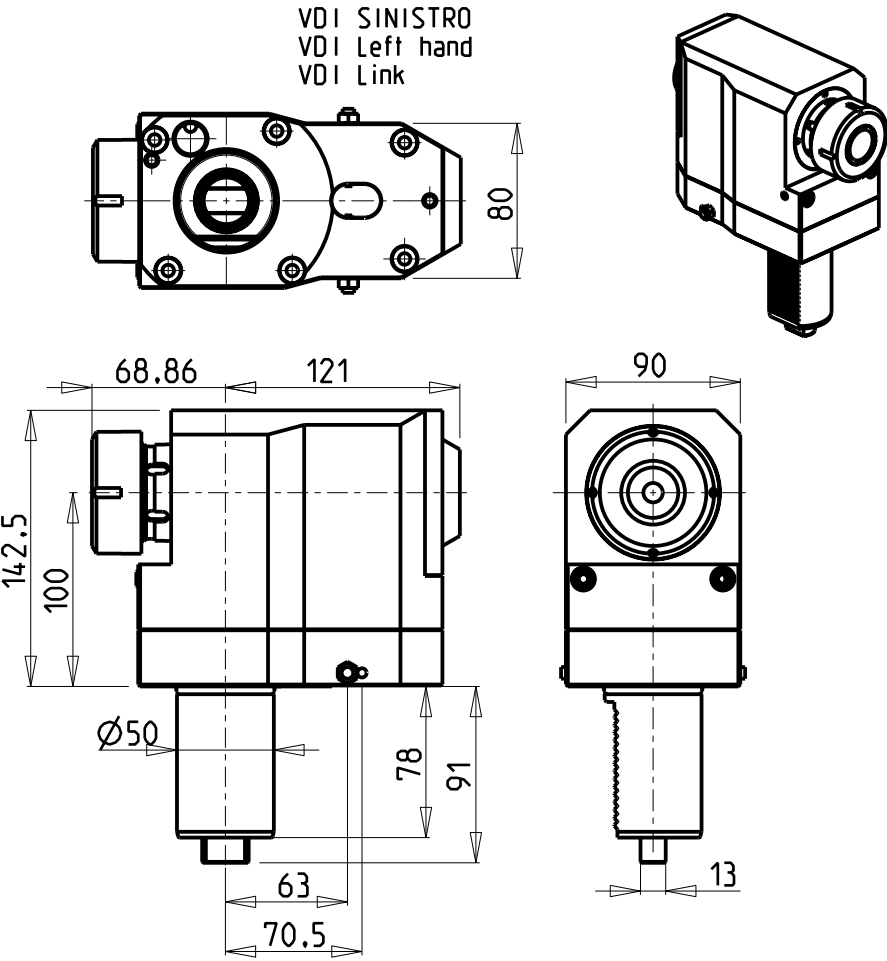


		PAGINA Page Seite
MODULO MOTORIZZATO RADIALE VDI50 Radial driven tool VDI50 Radial angetriebenes Werkzeug VDI50		DUP010.3.00
MODULO MOTORIZZATO RADIALE 4 USCITE VDI50 Radial 4 head driven tool VDI50 Radial angetriebenes Werkzeug 4 Ausgaenge VDI50		DUP100.3.00
MODULO MOTORIZZATO ASSIALE VDI50 Axial driven tool VDI50 Axial angetriebenes Werkzeug VDI50		DUP150.3.10
MODULO MOTORIZZATO ASSIALE MTSK VDI50 Axial MTSK driven tool VDI50 Axial MTSK angetriebenes Werkzeug VDI50		DUP150.3.10.K
MODULO MOTORIZZATO RADIALE VDI50 Radial driven tool VDI50 Radial angetriebenes Werkzeug VDI50		DUP153.3.10
MODULO MOTORIZZATO RADIALE MTSK VDI50 Radial MTSK driven tool VDI50 Radial MTSK angetriebenes Werkzeug VDI50		DUP153.3.10.K
MODULO MOTORIZZATO ASSIALE DISASSATO 60mm VDI50 Axial driven tool re-directed by 60mm VDI50 Axial angetriebenes Werkzeug achsversetzt um 60mm VDI50		DUP160.3.00
MODULO MOTORIZZATO ASSIALE RIDOTTO I=2:1 DISASSATO 50mm VDI50 Axial geared-down I=2:1 driven tool re-directed by 50mm VDI50 Axial angetriebenes Werkzeug untersetzt I=2:1 achsversetzt um 50mm VDI50		DUP160.3.10
MODULO MOTORIZZ. ASSIALE MOLTIPLICATO I=1:2 DISASSATO 50mm VDI50 Axial geared-up I=1:2 driven tool re-directed by 50mm VDI50 Axial angetriebenes Werkzeug uebersetzt I=1:2 achsversetzt um 50mm VDI50		DUP160.3.20
MODULO MOTORIZZATO ORIENTABILE ±90° VDI50 ±90° adjustable angle driven tool VDI50 Angetriebenes Werkzeug schwenkbar ±90° VDI50		DUP333.3.00
MODULO MOTORIZZATO ORIENTABILE ±90° CON NONIO DIGITALE VDI50 ±90° adjustable angle driven tool with digital display VDI50 Angetriebenes Werkzeug schwenkbar ±90° mit digital display VDI50		DUP333.3.01
MODULO MOTORIZZATO PORTACREATORE VDI50 Driven gear hobber VDI50 Angetriebenes Zahnradwaelzfraes-Werkzeug VDI50		DUP340.3.00

		PAGINA Page Seite
MODULO MOTORIZZATO RADIALE VDI50 MT CAPTO Radial driven tool VDI50 MT CAPTO Radial angetriebenes Werkzeug VDI50 MT CAPTO		DUP153.C.40

Distributeur/ importateur : Crylax 0033 450 960920 - info@crylax.com



Cod. MT	Mandrino Spindle Spindel	I	RPM	Coppia Max Max Torque Max Drehmoment	Lubrificazione est. Ext. coolant Aussenkuehlung	CHIAVI NON INCLUSE Keys not included Schlüssel nicht einbegriffen		VDI
151DUP_R40_50A20	ER40	1:1	4000	100Nm	X	CHSTER40	CHSE5255	SINISTRO - Left - Link
151DUP_R40_50A00	ER40	1:1	4000	100Nm	X	CHSTER40	CHSE5255	DESTRO - Right - Recht

DUPLOMATIC

VDI 50

MODULO MOTORIZZATO RADIALE VDI50

Radial driven tool VDI50

Radial angetriebenes Werkzeug VDI50

IN

OUT

M.T. srl

Via Casino Albini 480

Tel. 0541/956034-957884

Fax 0541/956341

47842 S. GIOVANNI IN M. (RN)

e-mail: mtma@mtmarchetti.com

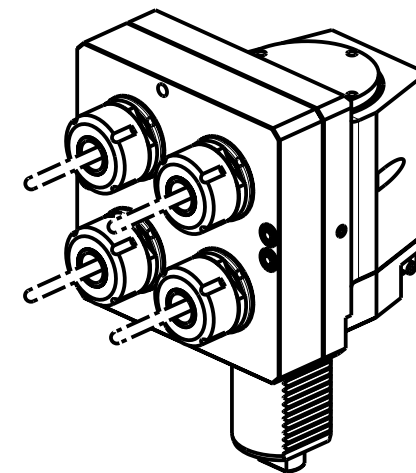
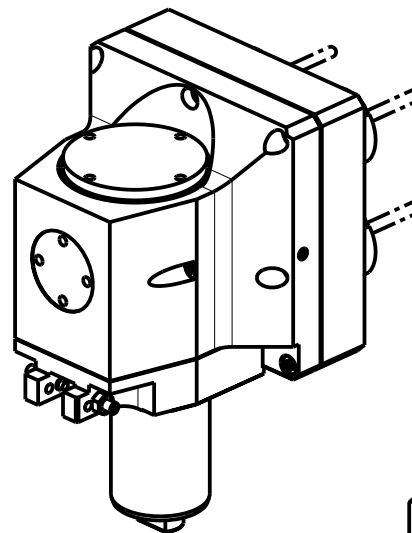
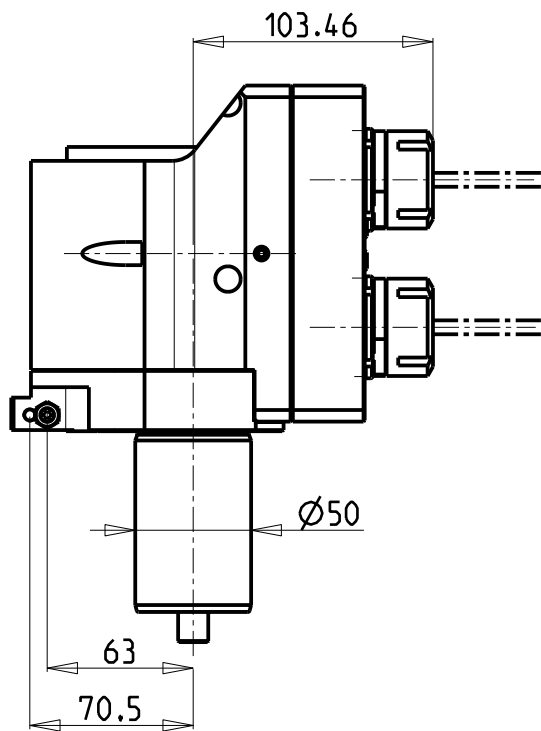
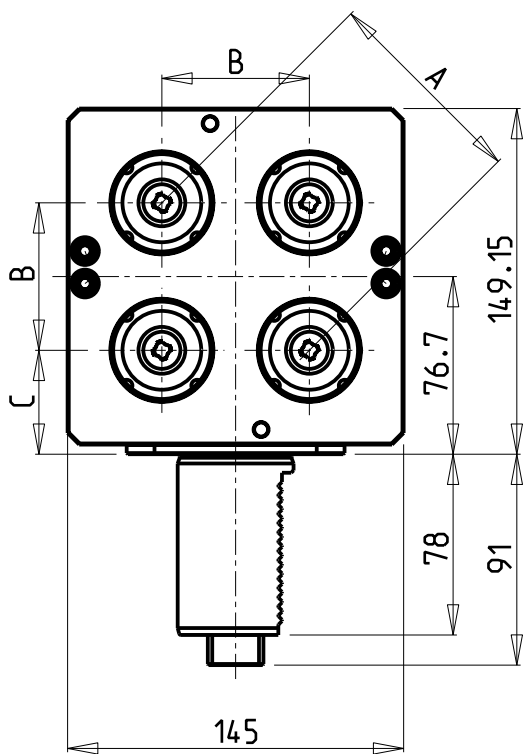
<http://www.mtmarchetti.com>

PRODUZIONE MODULI ROTANTI

PAGINA DUP010-3-00

Subject to change without notice.

09/2019



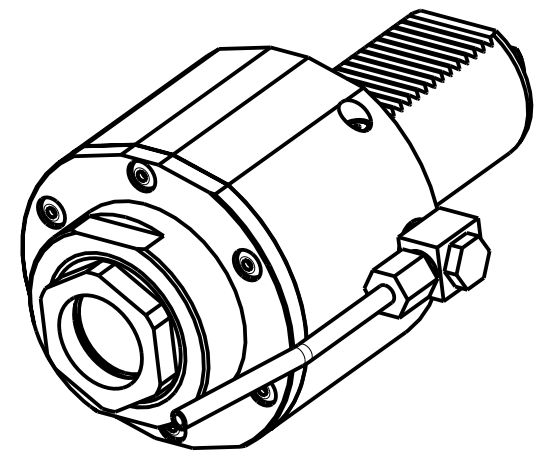
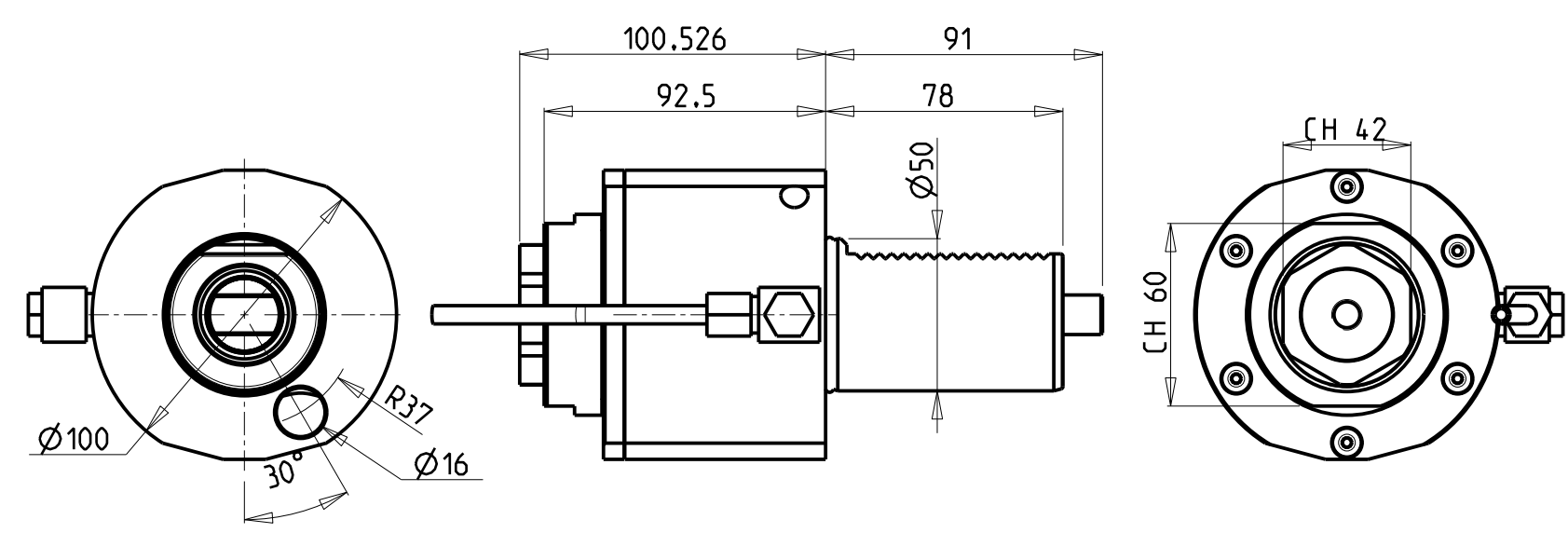
Cod. MT	Mandrino Spindle Spindel	N°Utensili N°Tools N°Werkzeuge	I	RPM	Coppia Max Max Torque Max Drehmoment	Lubrificazione est. Ext. coolant Aussenkuehlung	A	B	C	CHIAVI NON INCLUSE Keys not included Schluessel nicht einbegriffen		VDI
0240025X4_90	ER25	4	2:1	2000	80Nm	X	90	63.64	44.88	CHSTER25	CHUB36	DESTRO - Right - Recht
0240025X4_105	ER25	4	2:1	2000	80Nm	X	105	74.246	39.577	CHSTER25	CHUB36	DESTRO - Right - Recht

DUPLOMATIC
VDI 50
MODULO MOTORIZZATO RADIALE 4 USCITE VDI50
Radial 4 head driven tool VDI50
Radial angetriebenes Werkzeug 4 Ausgaenge VDI50

M.T. srl
Via Casino Albini 480
Tel. 0541/956034-957884
Fax 0541/956341
47842 S. GIOVANNI IN M. (RN)
e-mail: mtma@mtmarchetti.com
<http://www.mtmarchetti.com>

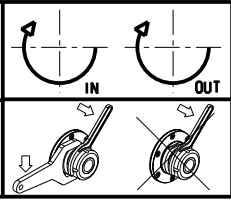
PRODUZIONE MODULI ROTANTI

PAGINA DUP100-3-00




Cod. MT	Mandrino Spindle Spindel	I	RPM	Coppia Max Max Torque Max Drehmoment	Lubrificazione int. Coolant through Innenkuehlung	Lubrificazione est. Ext. coolant Aussenkuehlung	CHIAVI NON INCLUSE Keys not included Schluessel nicht inbegriffen	
DUP0020140	ER A 40	1:1	4000	100Nm		X	CHUB60	CHUB42
DUP0020240	ER A 40	1:1	4000	100Nm	P=30bar	X	CHUB60	CHUB42

DUPLOMATIC
VDI 50
MODULO MOTORIZZATO ASSIALE VDI50
Axial driven tool VDI50
Axial angetriebenes Werkzeug VDI50

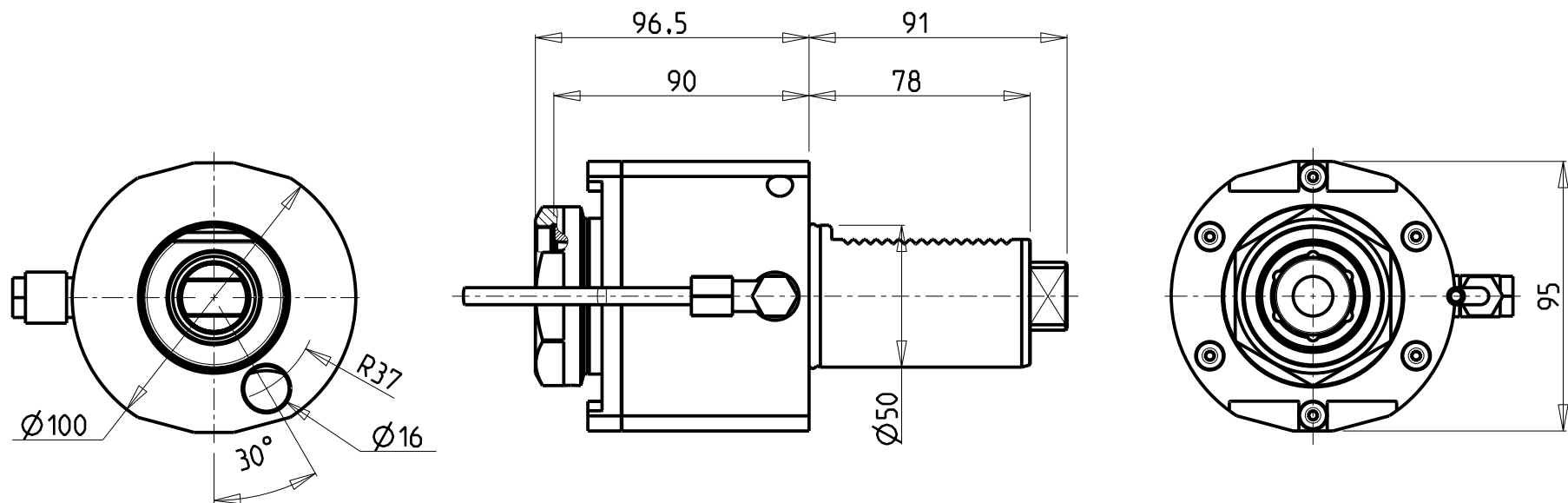


M.T. srl
Via Casino Albini 480
Tel. 0541/956034-957884
Fax 0541/956341
47842 S. GIOVANNI IN M. (RN)
e-mail: mtma@mtmarchetti.com
<http://www.mtmarchetti.com>

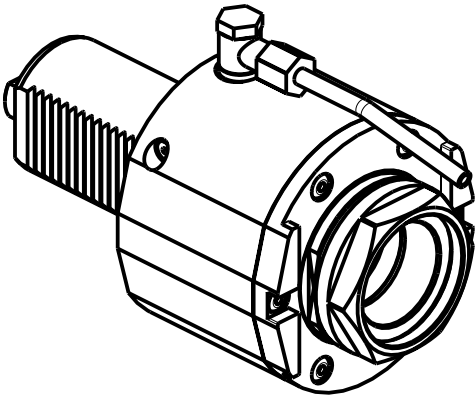
PRODUZIONE MODULI ROTANTI



PAGINA DUP150-3-10



PER PORTAUTENSILI MODULARI MTSK-50 VEDI PAG. TBL300-1-50
FOR MTSK-50 QUIK CHANGE TOOLHOLDERS CLAMPINGS SEE PAGE TBL300-1-50
FUER MTSK-50 MODULARE WERKZEUGAUFNAHMEN SIEHE SEITE TBL300-1-50



Cod. MT	Mandrino Spindle Spindel	I	RPM	Coppia Max Max Torque Max Drehmoment	Lubrificazione est. Ext. coolant Aussenkuehlung	CHIAVI NON INCLUSE Keys not included Schluessel nicht einbegriffen	
DUP0470150	MTSK-50	1:1	4000	100Nm	X	C HUB55	OKU0430007 ■

- Chiave inclusa
- Key included
- Schluessel inbegriffen

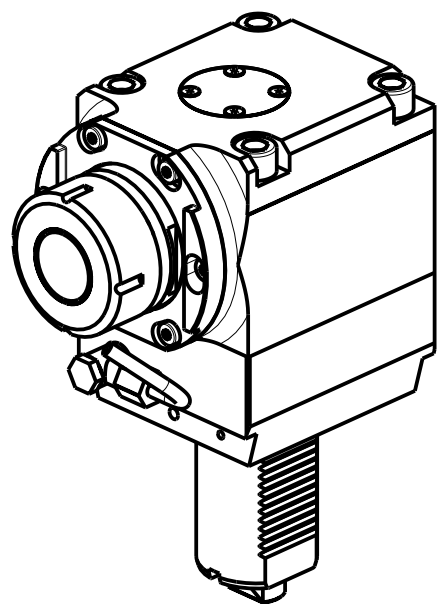
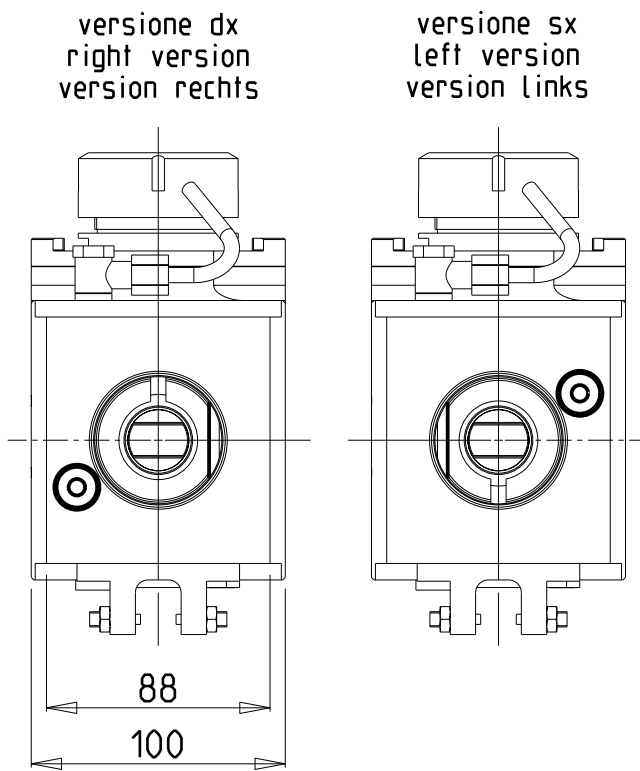
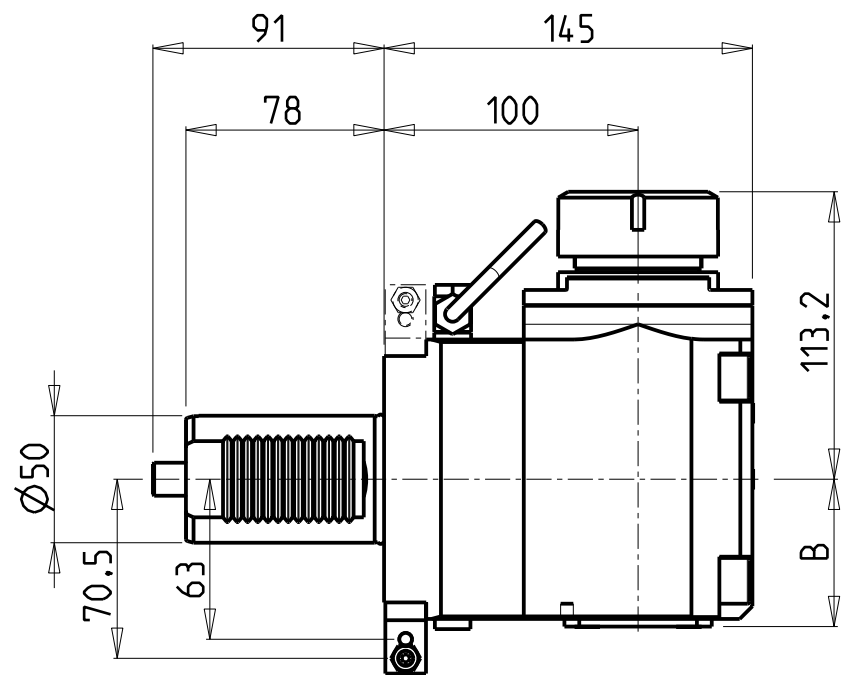
DUPLOMATIC
VDI 50

MODULO MOTORIZZATO ASSIALE MTSK VDI50
Axial MTSK driven tool VDI50
Axial MTSK angetriebenes Werkzeug VDI50

M.T. srl
Via Casino Albini 480
Tel. 0541/956034-957884
Fax 0541/956341
47842 S. GIOVANNI IN M. (RN)
e-mail: mtma@mtmarchetti.com
<http://www.mtmarchetti.com>

PRODUZIONE MODULI ROTANTI

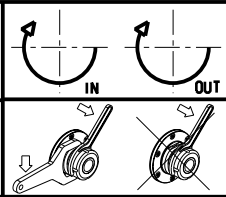
PAGINA DUP150-3-10-K



Cod. MT		Mandrino Spindle Spindel	I	RPM	Coppia Max Max Torque Max Drehmoment	Lubrificazione int. Coolant through Innenkuehlung	Lubrificazione est. Exl. coolant Aussenkuehlung	B	CHIAVI NON INCLUDE Keys not included Schluessel nicht einbegriffen	
versione dx right version version rechts	versione sx left version version links									
DUP0200140	DUP0201140	ER40	1:1	4000	100Nm	-	X	58	CHSTER40	OKU0430007 *
DUP0200240	DUP0201240	ER40	1:1	4000	100Nm	P=70bar	X	66.5	CHSTER40	OKU0430007 *

- Chiave inclusa
- Key included
- Schluessel inbegriffen

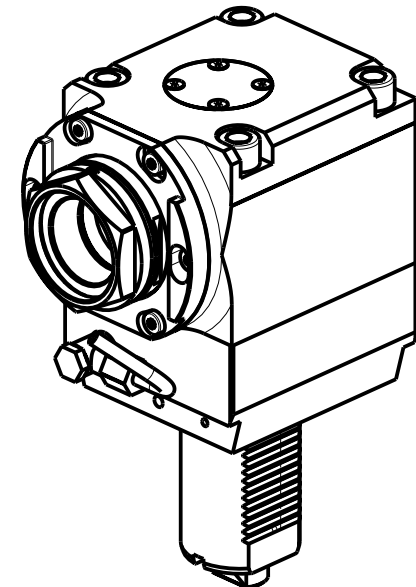
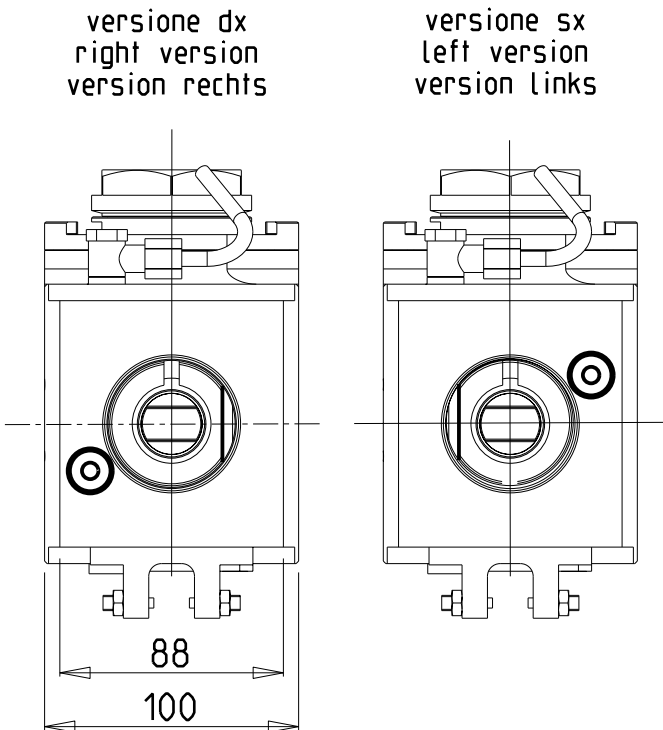
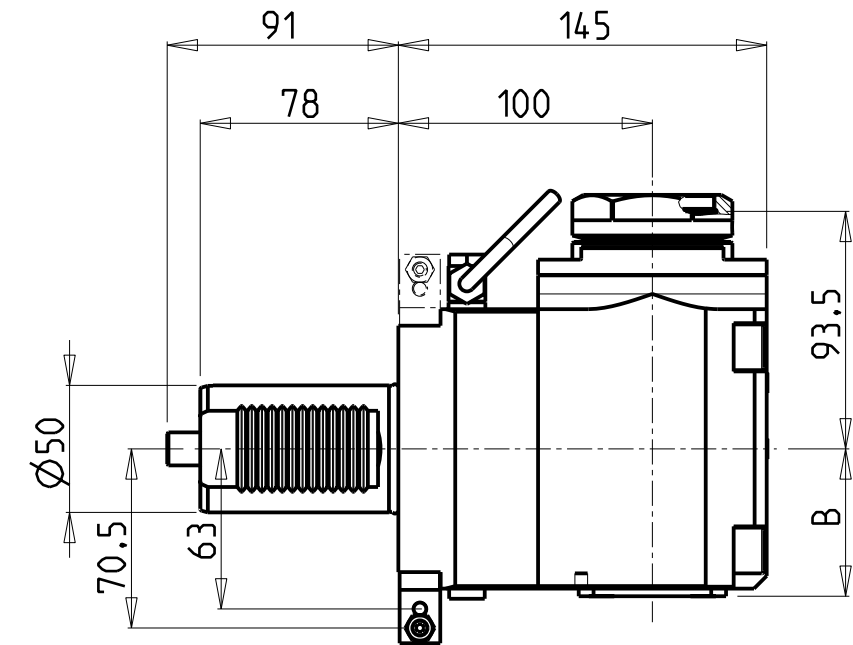
DUPLOMATIC
VDI 50
MODULO MOTORIZZATO RADIALE VDI50
Radial driven tool VDI50
Radial angetriebenes Werkzeug VDI50



M.T. srl
Via Casino Albini 480
Tel. 0541/956034-957884
Fax 0541/956341
47842 S. GIOVANNI IN M. (RN)
e-mail: mtma@mtmarchetti.com
<http://www.mtmarchetti.com>

PRODUZIONE MODULI ROTANTI

PAGINA DUP153-3-10



PER PORTAUTENSILI MODULARI MTSK-50 VEDI PAG. TBL300-1-50
FOR MTSK-50 QUIK CHANGE TOOLHOLDERS CLAMPINGS SEE PAGE TBL300-1-50
FUER MTSK-50 MODULARE WERKZEUGAUFNAHMEN SIEHE SEITE TBL300-1-50

Cod. MT		Mandrino Spindle Spindel	I	RPM	Coppia Max Max Torque Max Drehmoment	Lubrificazione int. Coolant through Innenkuehlung	Lubrificazione est. Ext. coolant Aussenkuehlung	B	CHIAVI NON INCLUDE Keys not included Schluessel nicht einbegriffen	
versione dx right version version rechts	versione sx left version version links									
DUP0210150	DUP0211150	MTSK-50	1:1	4000	100Nm	-	X	58	C HUB55	OKU0430007 *
DUP0210250	DUP0211250	MTSK-50	1:1	4000	100Nm	P=70bar	X	66.5	C HUB55	OKU0430007 *

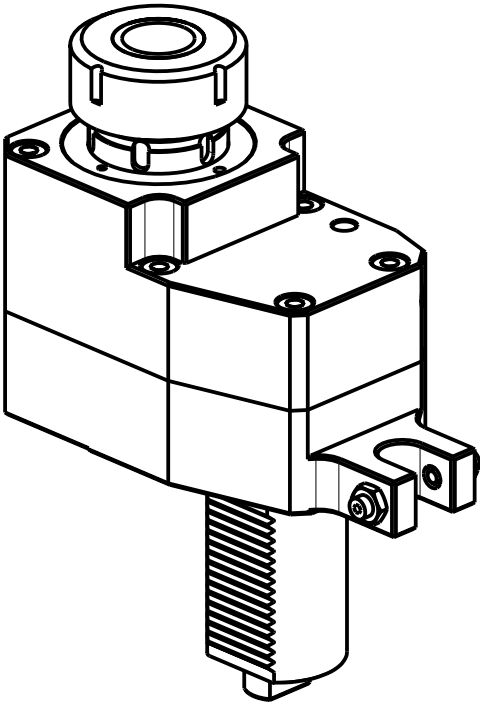
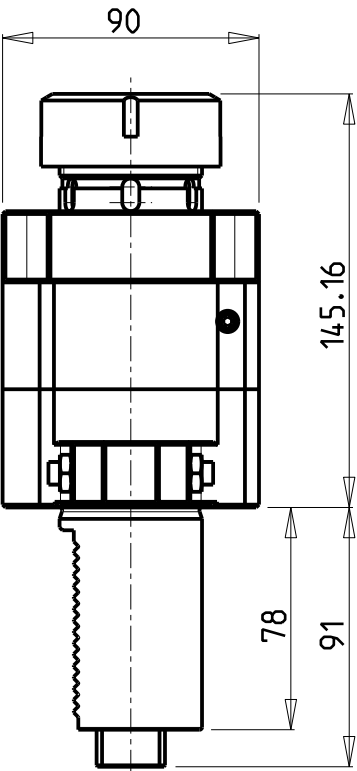
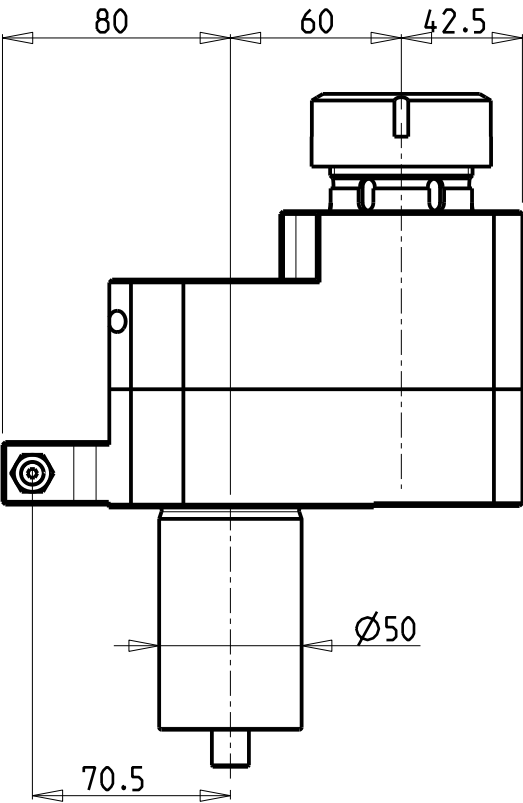
- Chiave inclusa
- Key included
- Schluessel inbegriffen

DUPLOMATIC
VDI 50
MODULO MOTORIZZATO RADIALE MTSK VDI50
Radial MTSK driven tool VDI50
Radial MTSK angetriebenes Werkzeug VDI50

M.T. srl
Via Casino Albini 480
Tel. 0541/956034-957884
Fax 0541/956341
47842 S. GIOVANNI IN M. (RN)
e-mail: mtma@mtmarchetti.com
<http://www.mtmarchetti.com>

PRODUZIONE MODULI ROTANTI

PAGINA DUP153-3-10-K



Cod. MT	Mandrino Spindle Spindel	I	RPM	Coppia Max Max Torque Max Drehmoment	Lubrificazione est. Ext. coolant Aussenkuehlung	CHIAVI NON INCLUSE Keys not included Schlüssel nicht einbegriffen		VDI
155DUP_A40_50A00	ER40	1:1	4000	100Nm	X	CHSTER40	CHSE5255	DESTRO - Right - Recht

DUPLOMATIC

VDI 50

MODULO MOTORIZZATO ASSIALE DISASSATO 60mm VDI50

Axial driven tool re-directed by 60mm VDI50

Axial angetriebenes Werkzeug achsversetzt um 60mm VDI50



M.T. srl

Via Casino Albini 480

Tel. 0541/956034-957884

Fax 0541/956341

47842 S. GIOVANNI IN M. (RN)

e-mail: mtma@mtmarchetti.com

<http://www.mtmarchetti.com>

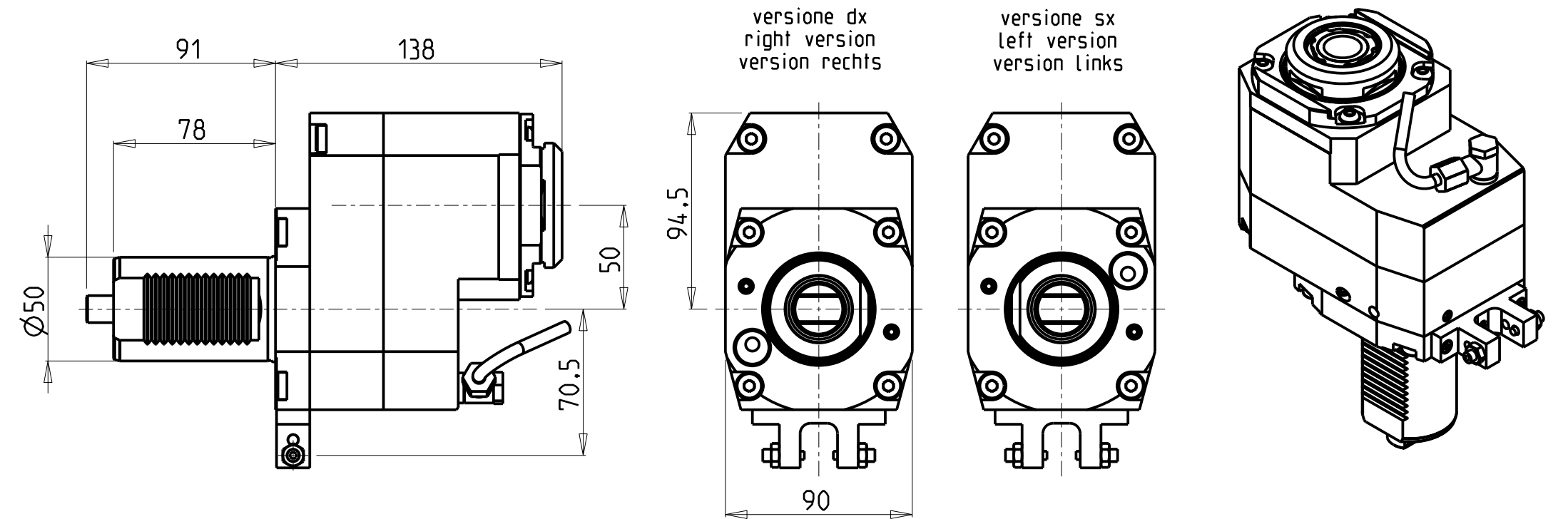
PRODUZIONE MODULI ROTANTI



PAGINA DUP160-3-00

Subject to change without notice.

09/2019



Cod. MT		Mandrino Spindle Spindel	I	RPM	Coppia Max Max Torque Max Drehmoment	Lubrificazione int. Coolant through Innenkuehlung	Lubrificazione est. Ext. coolant Aussenkuehlung	CHIAVI NON INCLUSE Keys not included Schluessel nicht einbegriffen		
versione dx right version version rechts	versione sx left version version links									
DUP0543132	DUP0544132	ERA32	2:1	2000	130Nm	-	X	CHUB30	CHTAER32ZC *	OKU0430007 *
DUP0543232	DUP0544232	ERA32	2:1	2000	130Nm	P=70bar	X	CHUB30	CHTAER32ZC *	OKU0430007 *

- Chiave inclusa
- Key included
- Schluessel inbegriffen

DUPLOMATIC

VDI 50

MODULO MOTORIZZATO ASSIALE RIDOTTO I=2:1 DISASSATO 50mm VDI50

Axial geared-down I=2:1 driven tool re-directed by 50mm VDI50

Axial angetriebenes Werkzeug untersetzt I=2:1 achsversetzt um 50mm VDI50

M.T. srl

Via Casino Albini 480

Tel. 0541/956034-957884

Fax 0541/956341

47842 S. GIOVANNI IN M. (RN)

e-mail: mtma@mtmarchetti.com

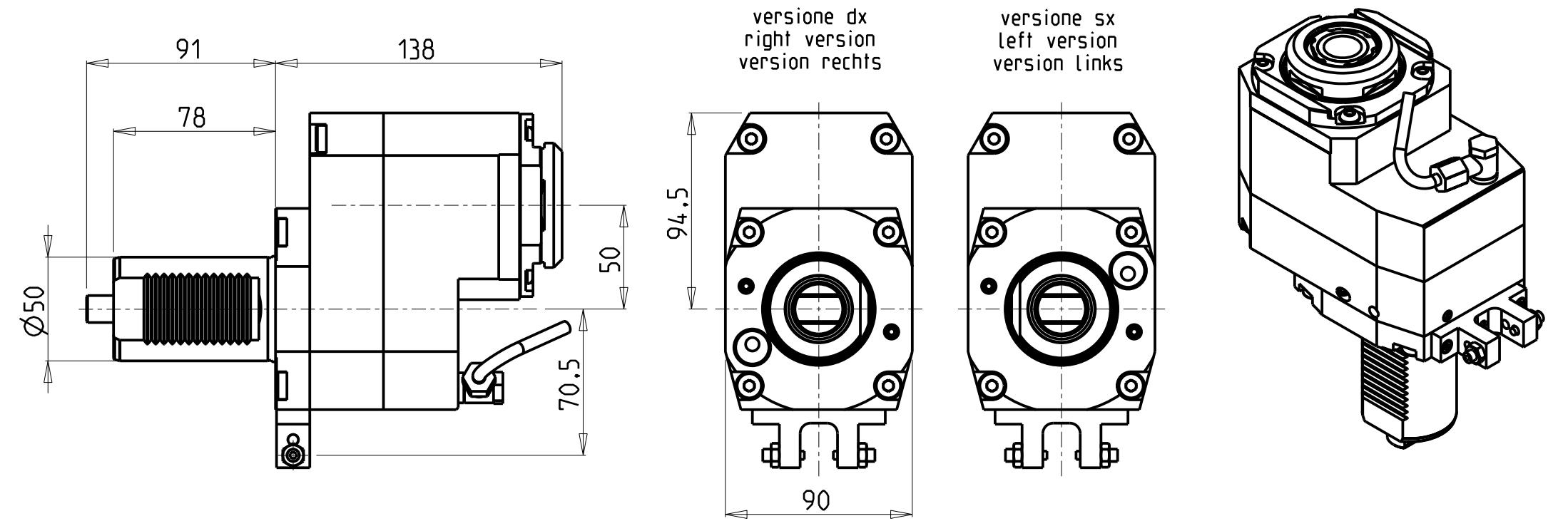
<http://www.mtmarchetti.com>

PRODUZIONE MODULI ROTANTI

PAGINA DUP160-3-10

Subject to change without notice.

09/2019



Cod. MT		Mandrino Spindle Spindel	I	RPM	Coppia Max Max Torque Max Drehmoment	Lubrificazione int. Coolant through Innenkuehlung	Lubrificazione est. Ext. coolant Aussenkuehlung	CHIAVI NON INCLUSE Keys not included Schluessel nicht einbegriffen		
versione dx right version version rechts	versione sx left version version links									
DUP0546132	DUP0547132	ERA32	1:2	8000	70Nm	-	X	CHUB30	CHTAER32ZC *	OKU0430007 *
DUP0546232	DUP0547232	ERA32	1:2	8000	70Nm	P=70bar	X	CHUB30	CHTAER32ZC *	OKU0430007 *

- Chiave inclusa
- Key included
- Schluessel inbegriffen

DUPLOMATIC

VDI 50

MODULO MOTORIZZATO ASSIALE MOLTIPLICATO I=1:2 DISASSATO 50mm VDI50

Axial geared-up I=1:2 driven tool re-directed by 50mm VDI50

Axial angetriebenes Werkzeug uebersezt I=1:2 achsversezt um 50mm VDI50

IN

OUT

M.T. srl

Via Casino Albini 480

Tel. 0541/956034-957884

Fax 0541/956341

47842 S. GIOVANNI IN M. (RN)

e-mail: mtma@mtmarchetti.com

<http://www.mtmarchetti.com>

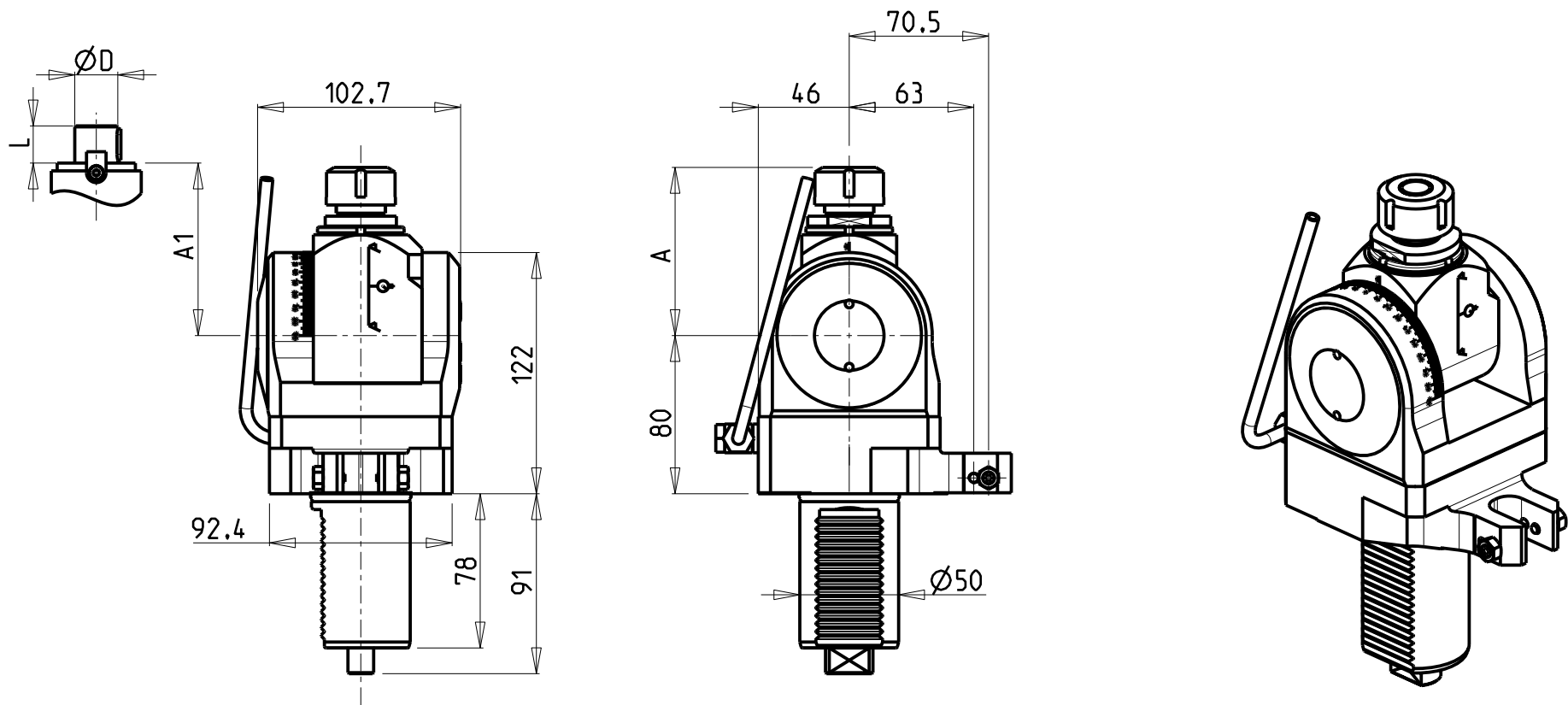
PRODUZIONE MODULI ROTANTI

MT

PAGINA DUP160-3-20

Subject to change without notice.

09/2019



Cod. MT	Mandrino Spindle Spindel	I	RPM	Coppia Max Max Torque Max Drehmoment	Lubrificazione est. Ext. coolant Aussenkühlung	A	A1	D	L	CHIAVI INCLUSE Keys included Schlüssel inbegriffen	VDI
DUP0500120	ER20	1:1	4000	40Nm	X	85.16	-	-	-	CHSTER20 CHUB36	DESTRO - Right - Recht
DUP0500125	ER25	1:1	4000	40Nm	X	86.16	-	-	-	CHSTER25 CHUB36	DESTRO - Right - Recht
DUP0500516	Ø16x17	1:1	4000	40Nm	X	-	65	16	17	CH_VTCROCE_M08 CHUB36	DESTRO - Right - Recht
DUP0500522	Ø22x19	1:1	4000	40Nm	X	-	66	22	19	CH_VTCROCE_M10 CHUB36	DESTRO - Right - Recht
DUP0500519	Ø3/4"x3/4"	1:1	4000	40Nm	X	-	65	3/4"	3/4"	CH_VTCROCE_M08 CHUB36	DESTRO - Right - Recht

DUPLOMATIC

VDI 50

MODULO MOTORIZZATO ORIENTABILE ±90° VDI50

±90° adjustable angle driven tool VDI50

Angetriebenes Werkzeug schwenkbar ±90° VDI50

M.T. srl

Via Casino Albini 480

Tel. 0541/956034-957884

Fax 0541/956341

47842 S. GIOVANNI IN M. (RN)

e-mail: mtma@mtmarchetti.com

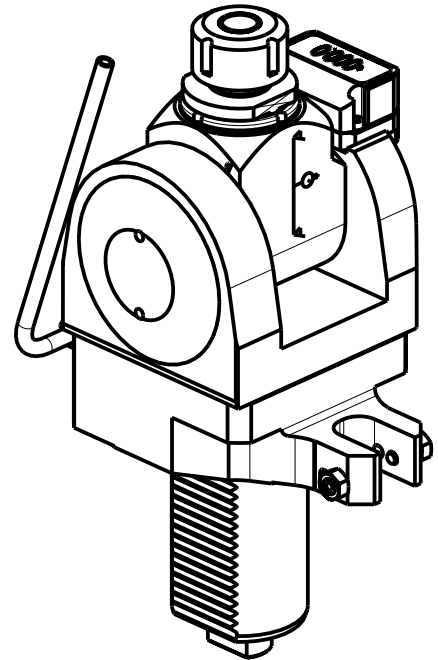
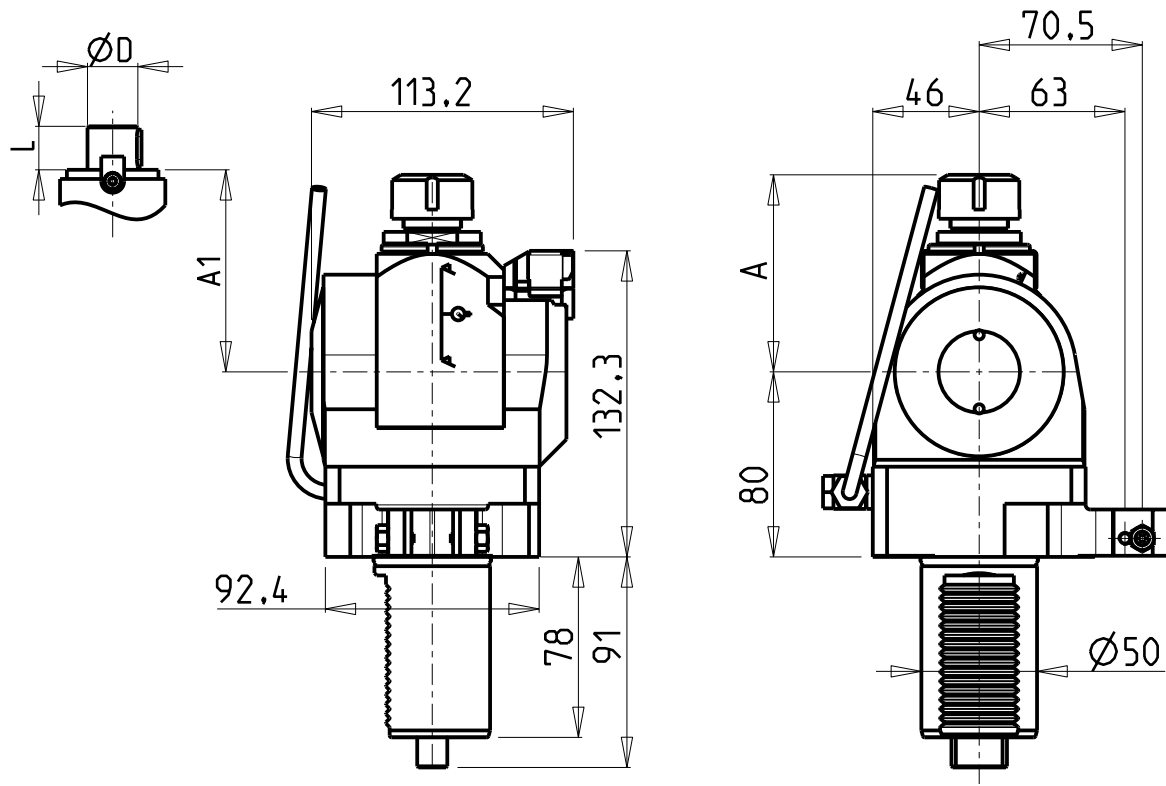
<http://www.mtmarchetti.com>

PRODUZIONE MODULI ROTANTI

PAGINA DUP333-3-00

Subject to change without notice.

09/2019



Cod. MT	Mandrino Spindle Spindel	I	RPM	Coppia Max Max Torque Max Drehmoment	Lubrificazione est. Ext. coolant Aussenkühlung	A	A1	D	L	CHIAVI INCLUSE Keys included Schlüssel inbegriffen		VDI
DUP0460120	ER20	1:1	4000	40Nm	X	85.16	-	-	-	CHSTER20	CHUB36	DESTRO - Right - Recht
DUP0460125	ER25	1:1	4000	40Nm	X	86.16	-	-	-	CHSTER25	CHUB36	DESTRO - Right - Recht
DUP0460516	Ø16x17	1:1	4000	40Nm	X	-	65	16	17	CH_VTCROCE_M08	CHUB36	DESTRO - Right - Recht
DUP0460522	Ø22x19	1:1	4000	40Nm	X	-	66	22	19	CH_VTCROCE_M10	CHUB36	DESTRO - Right - Recht
DUP0460519	Ø3/4"x3/4"	1:1	4000	40Nm	X	-	65	3/4"	3/4"	CH_VTCROCE_M08	CHUB36	DESTRO - Right - Recht

DUPLOMATIC

VDI 50

MODULO MOTORIZZATO ORIENTABILE ±90° CON NONIO DIGITALE VDI50

±90° adjustable angle driven tool with digital display VDI50

Angetriebenes Werkzeug schwenkbar ±90° mit digital display VDI50



M.T. srl

Via Casino Albini 480

Tel. 0541/956034-957884

Fax 0541/956341

47842 S. GIOVANNI IN M. (RN)

e-mail: mtma@mtmarchetti.com

<http://www.mtmarchetti.com>

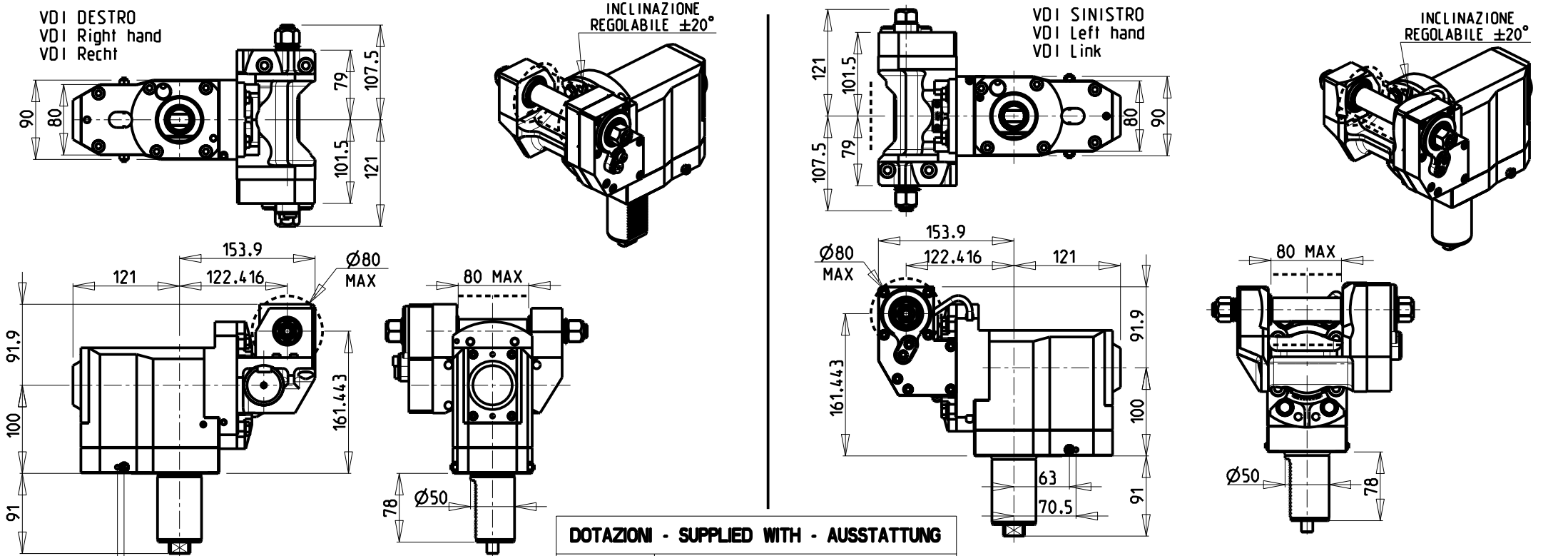
PRODUZIONE MODULI ROTANTI



PAGINA DUP333-3-01

Subject to change without notice.

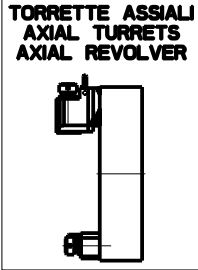
09/2019



DOTAZIONI - SUPPLIED WITH - AUSSTATTUNG	
mm / inch	
	- N°1 ALBERO + DISTANZIALI
	- N°1 SHAFT + SPACER
	- N°1 DORN + ABSTANDSSTUECK

PER ALBERI E DISTANZIALI VEDI PAG. TBL250-1-00
FOR SHAFT END SPACER SEE PAGE TBL250-1-00
FUER DORN UND ABSTANDSSTUECK SEITE TBL250-1-00

Cod. MT	I	RPM max	Coppia Max Max Torque Max Drehmoment	Lubrificazione est. Ext. coolant Aussenkuehlung	D (mm)	D (Inch)	CHIAVI INCLUSE Keys included Schluessel inbegriffen			VDI
156DUP_PCR_50A00	1:1	4000	60Nm	X	16-22-27-32	3/4"-1"-1 1/4"	CHUB24	CHUB13	CHESL08	DESTRO - Right - Recht
156DUP_PCR_50A01	2:1	2000	80Nm	X	16-22-27-32	3/4"-1"-1 1/4"	CHUB24	CHUB13	CHESL08	DESTRO - Right - Recht
156DUP_PCR_50A10	1:1	4000	60Nm	X	16-22-27-32	3/4"-1"-1 1/4"	CHUB24	CHUB13	CHESL08	SINISTRO - Left - Link
156DUP_PCR_50A11	2:1	2000	80Nm	X	16-22-27-32	3/4"-1"-1 1/4"	CHUB24	CHUB13	CHESL08	SINISTRO - Left - Link



DUPLOMATIC

VDI 50

MODULO MOTORIZZATO PORTACREATORE VDI50

Driven gear hobber VDI50

Angetriebenes Zahnradwaelzfraes-Werkzeug VDI50

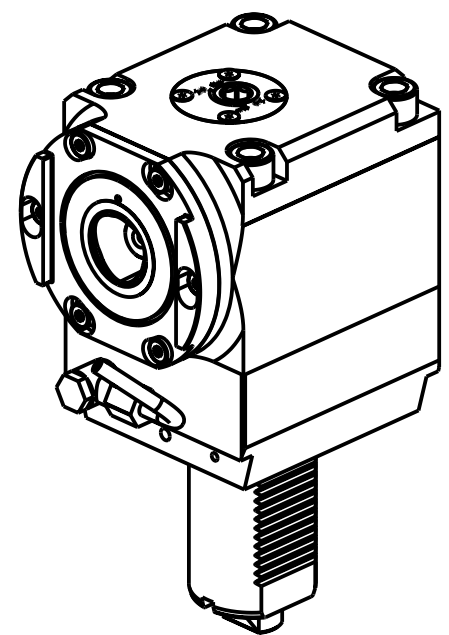
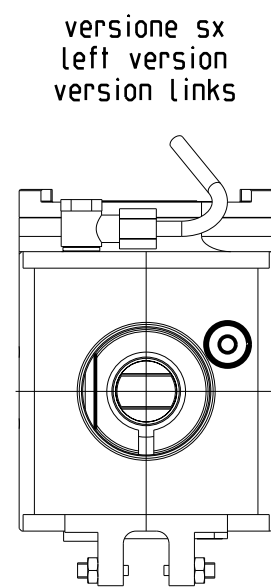
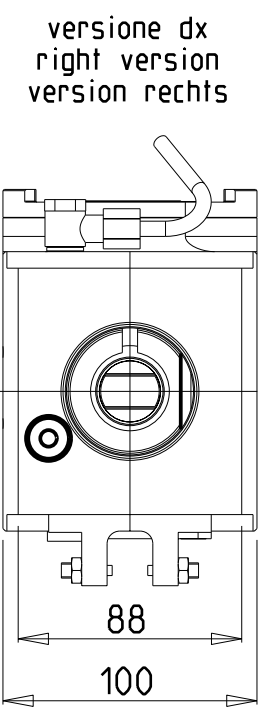
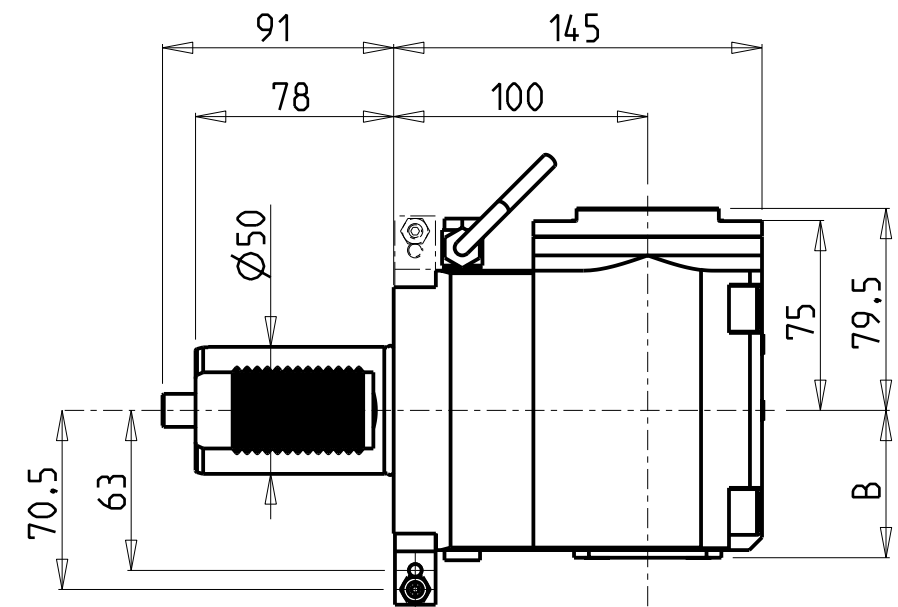
M.T. srl
Via Casino Albini 480
Tel. 0541/956034-957884
Fax 0541/956341
47842 S. GIOVANNI IN M. (RN)
e-mail: mtma@mtmarchetti.com
<http://www.mtmarchetti.com>

PRODUZIONE MODULI ROTANTI

PAGINA DUP340-3-00

Subject to change without notice.

09/2019



Cod. MT		TAGLIA Size Masse	I	RPM	Coppia Max Max Torque Max Drehmoment	Lubrificazione int. Coolant through Innenkuehlung	Lubrificazione est. Ext. coolant Aussenkuehlung	B
versione dx right version version rechts	versione sx left version version links							
DUP0550140	DUP0551140	C 4	1:1	4000	100Nm	-	X	58
DUP0550240	DUP0551240	C 4	1:1	4000	100Nm	P=70bar	X	66.5

- Chiave inclusa
- Key included
- Schluessel inbegriffen

DUPLOMATIC

VDI 50

MODULO MOTORIZZATO RADIALE VDI50 MT CAPTO

Radial driven tool VDI50 MT CAPTO

Radial angetriebenes Werkzeug VDI50 MT CAPTO

M.T. srl

Via Casino Albini 480

Tel. 0541/956034-957884

Fax 0541/956341

47842 S. GIOVANNI IN M. (RN)

e-mail: mtma@mtmarchetti.com

<http://www.mtmarchetti.com>

PRODUZIONE MODULI ROTANTI

PAGINA DUP153-C-40

Distributeur/ importateur : Crylax 0033 450 960920 - info@crylax.com