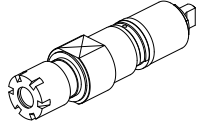
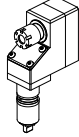
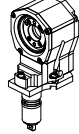
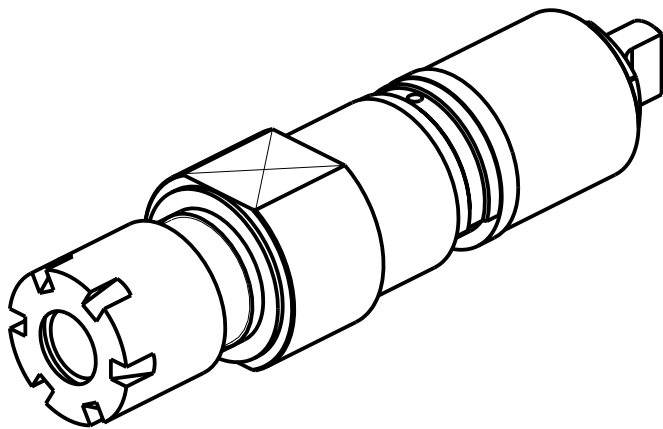
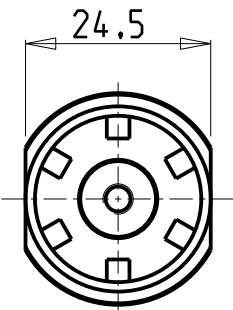
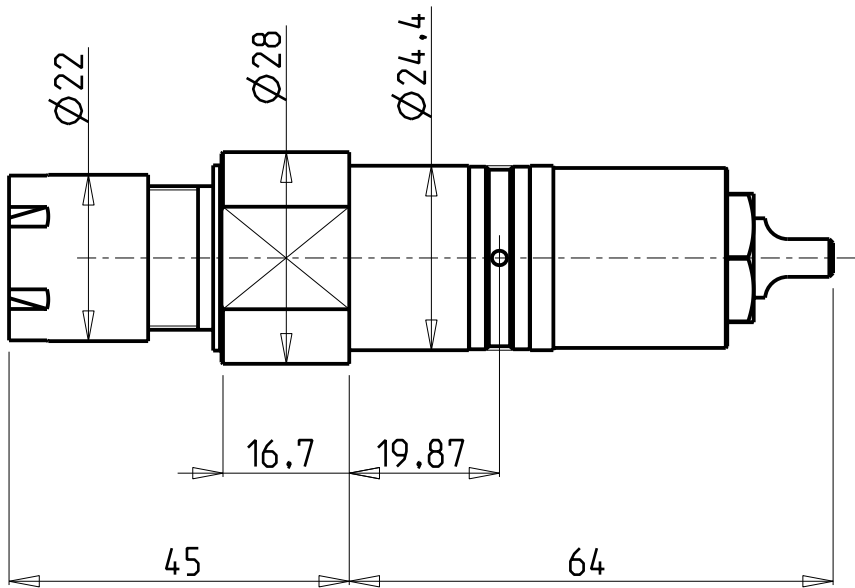


		PAGINA Page Seite
<b>MODULO MOTORIZZATO RADIALE</b> Radial driven tool Radial angetriebenes Werkzeug		SPR010.1.00
<b>MODULO MOTORIZZATO ASSIALE ARRETRATO</b> Axial rear-set driven tool Axial angetriebenes Werkzeug zurueckversetzt		SPR180.1.20
<b>MODULO MOTORIZZATO TURBINATORE RIDOTTO 1=2:1</b> Driven whirling tool geared-down 1=2:1 Gewindewirbeleinrichtung untersetzt 1=2:1		SPR370.1.00

Distributeur/ importateur : Crylax 0033 450 960920 - [info@crylax.com](mailto:info@crylax.com)

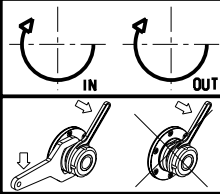


Cod. MT	Mandrino Spindle Spindel	I	RPM	Lubr.esterna Ext. coolant Aussenkuehlung	CHIAVI NON INCLUSE Keys not included Schluessel nicht einbegriffen
SPC 1621000	ER16	1:1	6000	X	CHMNER16

DMG-MORI  
SPRINT 20/5 - SPRINT 20/8

MODULO MOTORIZZATO RADIALE  
Radial driven tool  
Radial angetriebenes Werkzeug

Subject to change without notice.

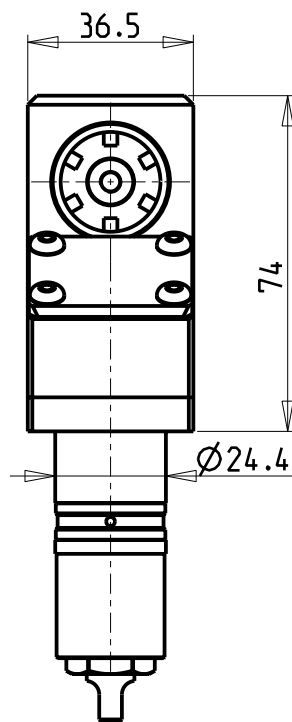
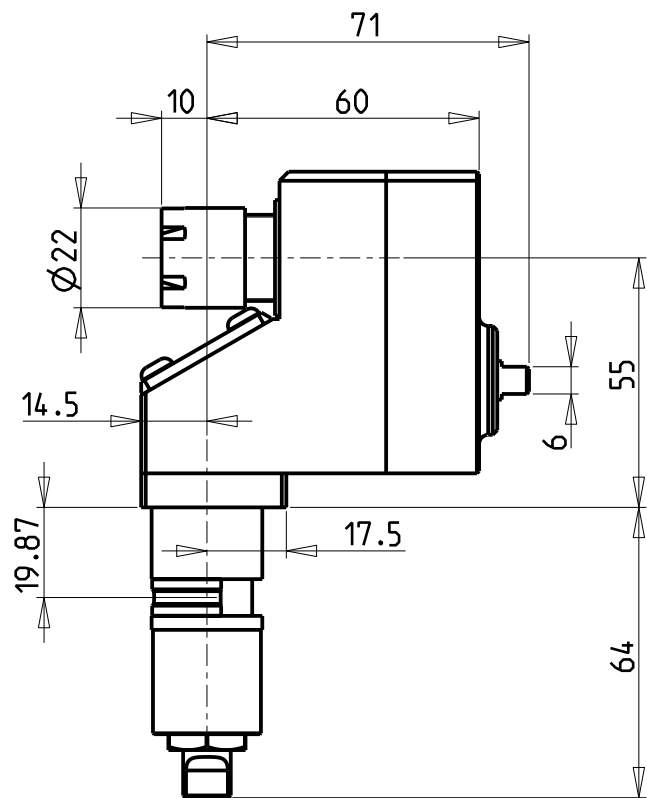


**M.T. srl**  
Via Casino Albini 480  
Tel. 0541/956034-957884  
Fax 0541/956341  
47842 S. GIOVANNI IN M. (RN)  
e-mail: [mtma@mtmarchetti.com](mailto:mtma@mtmarchetti.com)  
<http://www.mtmarchetti.com>

PRODUZIONE MODULI ROTANTI

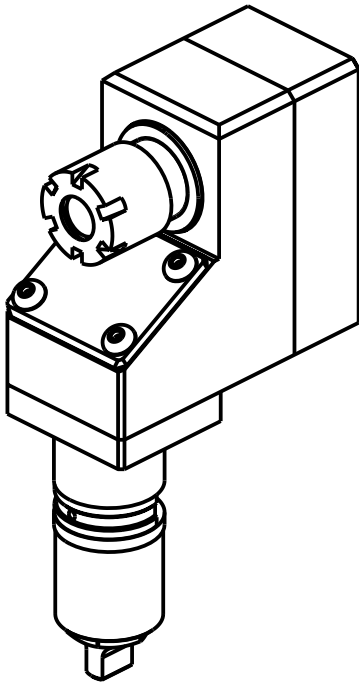


PAGINA SPR010-1-00



**ATTENZIONE - ATTENTION - ACHTUNG**

- Solo per mandrino principale
- Only for main spindle
- Nur für Hauptspindel

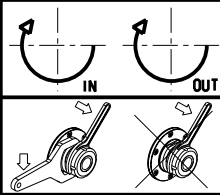


Cod. MT	Mandrino Spindle Spindel	I	RPM	Lubr.esterna Ext. coolant Aussenkuehlung	CHIAVI NON INCLUSE Keys not included Schluessel nicht einbegriffen
SPC0891000	ER16	1:1	6000	X	CHMNER16

DMG-MORI  
SPRINT 20/5 - SPRINT 20/8

MODULO MOTORIZZATO ASSIALE ARRETRATO  
Axial rear-set driven tool  
Axial angetriebenes Werkzeug zurueckversetzt

Subject to change without notice.

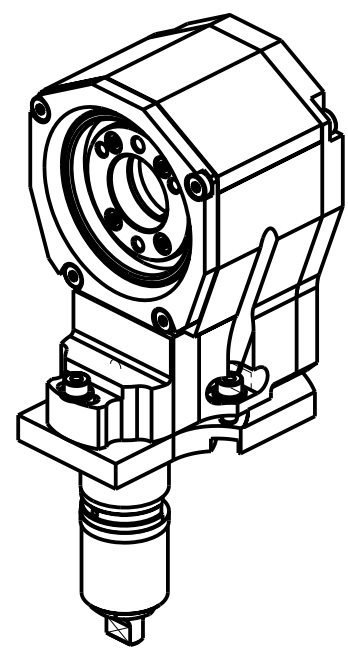
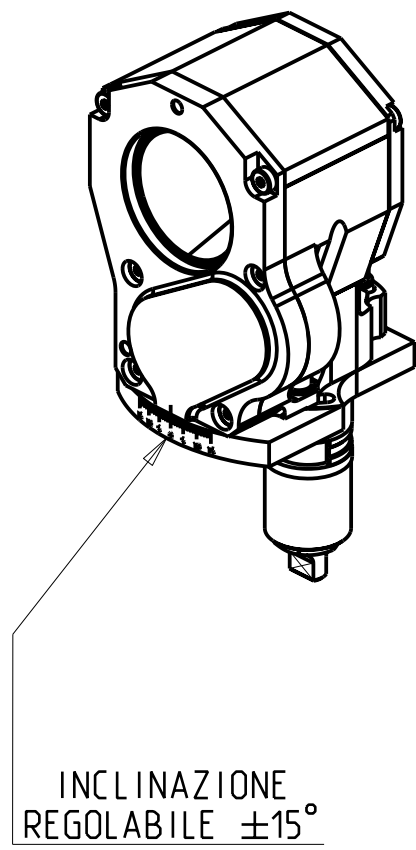
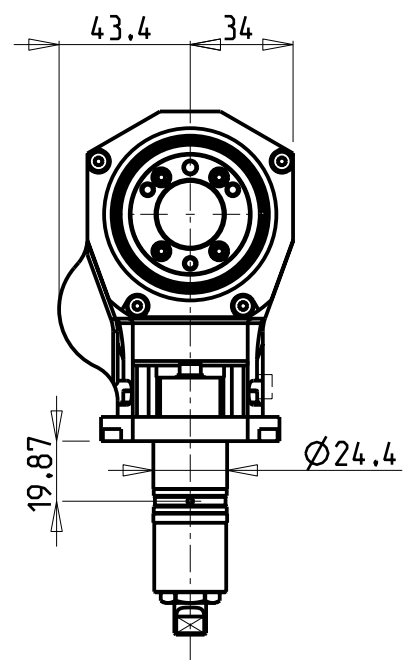
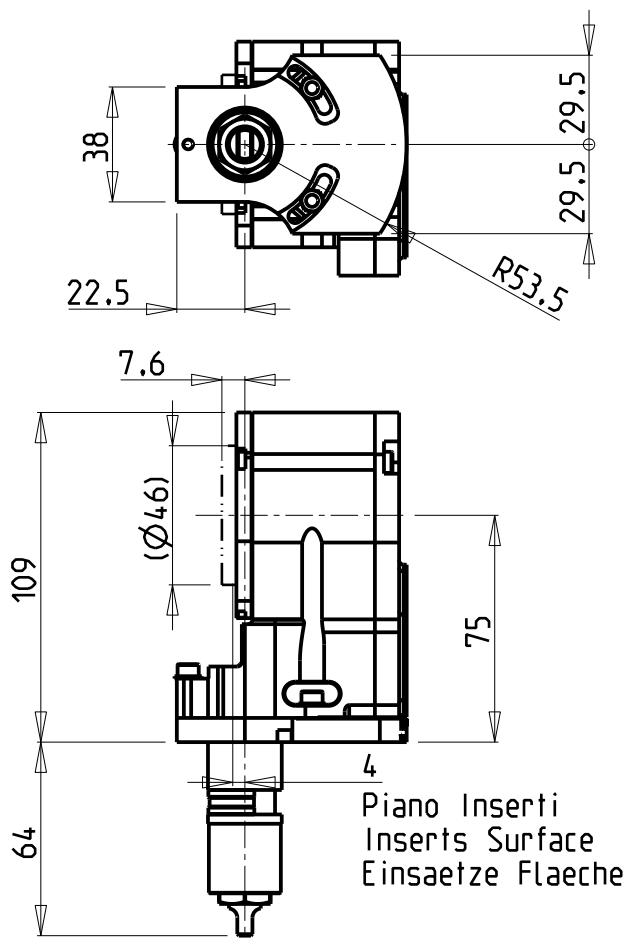


**M.T. srl**  
Via Casino Albini 480  
Tel. 0541/956034-957884  
Fax 0541/956341  
47842 S. GIOVANNI IN M. (RN)  
e-mail: [mtma@mtmarchetti.com](mailto:mtma@mtmarchetti.com)  
<http://www.mtmarchetti.com>

PRODUZIONE MODULI ROTANTI



PAGINA SPR180-1-20



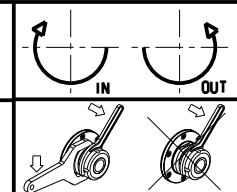
Cod. MT	I	RPM	Lubrificazione est. Ext. coolant Aussenkuehlung
SPC 1921000	2:1	3000	X

Fresa non inclusa:  
Milling-cutter not included:  
Fraese nicht inbegriffen:

SANDVIK Coromill 325 cod. 325-12AP40-16M

DMG-MORI  
SPRINT 20/8

MODULO MOTORIZZATO TURBINATORE RIDOTTO I=2:1  
Driven whirling tool geared-down I=2:1  
Gewindewirbeleinrichtung untersetzt I=2:1



**M.T. srl**  
Via Casino Albini 480  
Tel. 0541/956034-957884  
Fax 0541/956341  
47842 S. GIOVANNI IN M. (RN)  
e-mail: [mtma@mtmarchetti.com](mailto:mtma@mtmarchetti.com)  
<http://www.mtmarchetti.com>

PRODUZIONE MODULI ROTANTI

PAGINA SPR370-1-00

Distributeur/ importateur : Crylax 0033 450 960920 - [info@crylax.com](mailto:info@crylax.com)