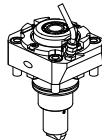
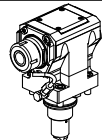
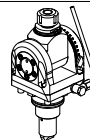

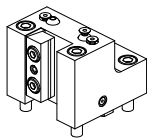
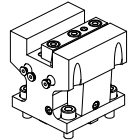
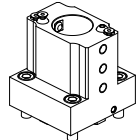
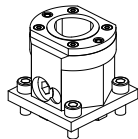
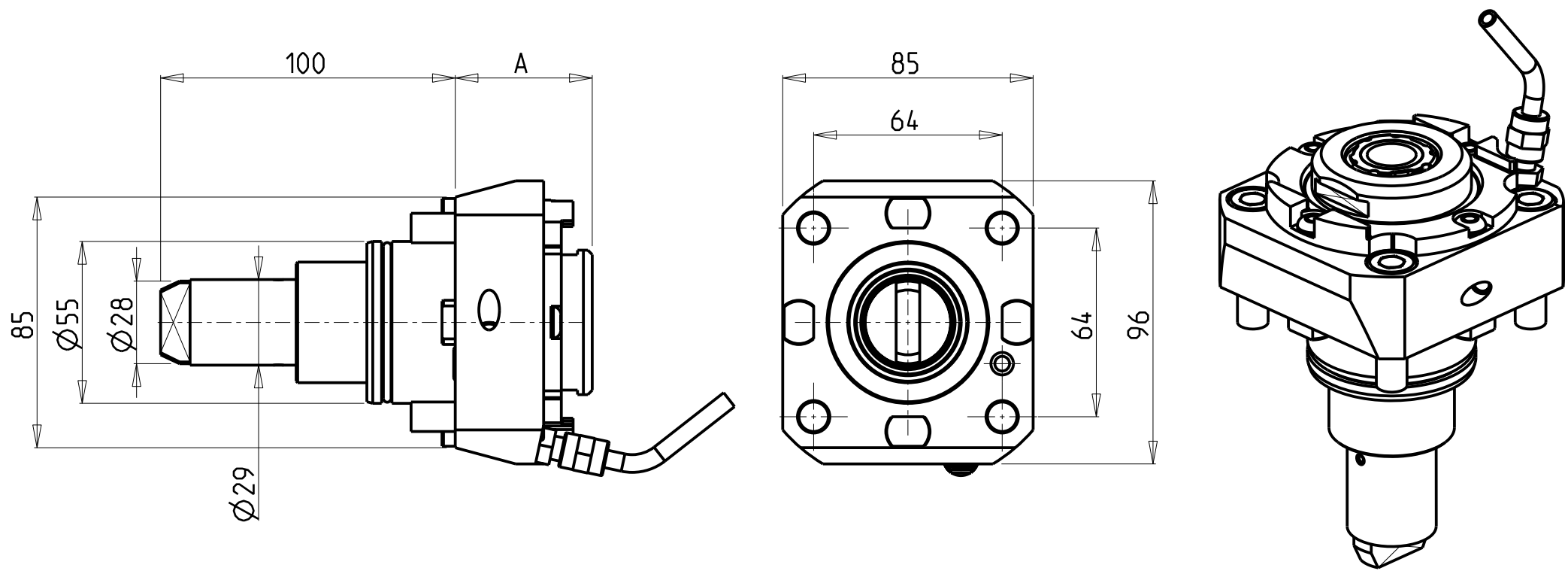


| | | PAGINA Page Seite |
|---|---|-------------------------|
| MODULO MOTORIZZATO RADIALE Radial driven tool Radial angetriebenes Werkzeug |  | EMG010.2.00 |
| MODULO MOTORIZZATO ASSIALE H=85mm Axial driven tool H=85mm Axial angetriebenes Werkzeug H=85mm |  | EMG150.2.31 |
| MODULO MOTORIZZATO ORIENTABILE $\pm 90^\circ$ H=54mm $\pm 90^\circ$ adjustable angle driven tool H=54mm Angetriebenes Werkzeug schwenkbar $\pm 90^\circ$ H=54mm |  | EMG333.2.00 |
| MODULO MOTORIZZATO ORIENTABILE $\pm 90^\circ$ CON NONIO DIGITALE H=54mm $\pm 90^\circ$ adjustable angle driven tool with digital display H=54mm Angetriebenes Werkzeug schwenkbar $\pm 90^\circ$ mit digital display H=54mm |  | EMG333.2.01 |
| PORTAUTENSILE RADIALE SINGOLO QD=20mm Radial single static tool QD=20mm Radial Single-Werkzeughalter QD=20mm |  | EMG420.2.00 |
| PORTAUTENSILE ASSIALE SINGOLO QD=20mm Axial single static tool QD=20mm Axial Single-Werkzeughalter QD=20mm |  | EMG550.2.00 |
| PORTAUTENSILE RADIALE PER BARENO $\varnothing 40mm$ Radial single boring bar holder $\varnothing 40mm$ Radial Bohrhalter $\varnothing 40mm$ |  | EMG575.2.00 |
| PORTAUTENSILE RADIALE SINGOLO MT CAPTO Radial single static tool MT CAPTO Radial Single-Werkzeughalter MT CAPTO |  | EMG575.B.50 |

Distributeur/ importateur : Crylax 0033 450 960920 - info@crylax.com



| Cod. MT | Mandrino Spindle Spindel | I | RPM | Coppia Max Max Torque Max Drehmoment | Lubrificazione int. Coolant through Innenkuehlung | Lubrificazione est. Ext. coolant Aussenkuehlung | A | CHIAVI NON INCLUSE Keys not included Schlüssel nicht einbegriffen | | |
|-------------|--------------------------------|-----|------|--|---|---|------|---|------------|------------|
| DW 02370325 | ERA25 | 1:1 | 6000 | 50Nm | - | X | 46.5 | CHUB27 | CHTAER25ZC | OKU0650004 |
| DW 02370425 | ERA25 | 1:1 | 6000 | 50Nm | P=30bar | X | 59.5 | CHUB27 | CHTAER25ZC | OKU0650004 |
| DW 02370132 | ER32 | 1:1 | 6000 | 50Nm | - | X | 71.2 | - | CHSTER32 | OKU0650004 |

- Chiave inclusa
- Key included
- Schlüssel inbegriffen

EMAG

MOD: VL4-V3

MODULO MOTORIZZATO RADIALE

Radial driven tool

Radial angetriebenes Werkzeug

IN

OUT

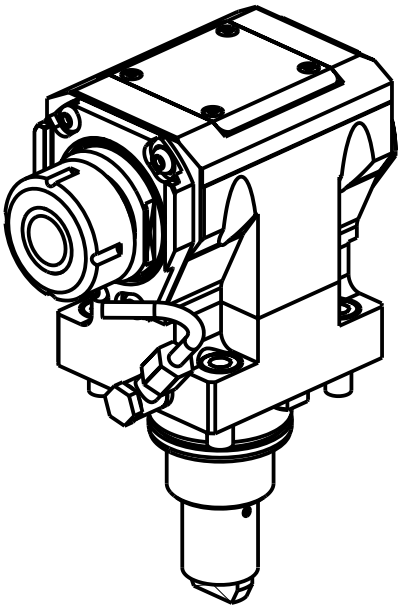
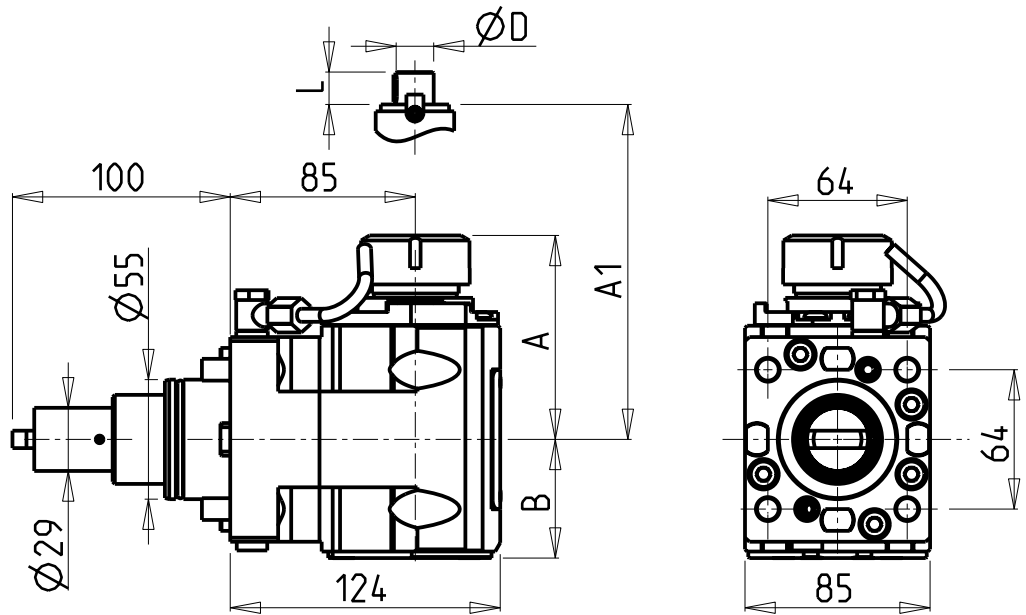
M.T. srl
Via Casino Albini 480
Tel. 0541/956034-957884
Fax 0541/956341
47842 S. GIOVANNI IN M. (RN)
e-mail: mtma@mtmarchetti.com
<http://www.mtmarchetti.com>

PRODUZIONE MODULI ROTANTI

PAGINA EMG010-2-00

Subject to change without notice.

09/2019



- Chiave inclusa
- Key included
- Schluessel inbegriffen

| Cod. MT | Mandrino Spindle Spindel | I | RPM | Coppia Max Max Torque Max Drehmoment | Reversibile lato mandrino/contromandrino Reversible sub/main spindle side Umkehrbare Spindel-seite/ Gegenspindel-seite | Lubr.interna Coolant through Innenkuehlung | Lubr. esterna Ext. coolant Aussenkuehlung | A | A1 | B | D | L | CHIAVI NON INCLUDE Keys not included Schluessel nicht einbegriffen | | |
|-------------|--------------------------------|-----|------|--|---|--|---|-------|------|------|----|----|--|----------------|------------|
| DW 02620125 | ER25 | 1:1 | 6000 | 50Nm | X | - | X | 91.16 | - | 54.5 | - | - | - | CHSTER25 | OKU0650004 |
| DW 02620225 | ER25 | 1:1 | 6000 | 50Nm | X | P=70bar | X | 91.16 | - | 65.5 | - | - | - | CHSTER25 | OKU0650004 |
| DW 02620132 | ER32 | 1:1 | 6000 | 50Nm | X | - | X | 93.66 | - | 54.5 | - | - | - | CHSTER32 | OKU0650004 |
| DW 02620232 | ER32 | 1:1 | 6000 | 50Nm | X | P=70bar | X | 93.66 | - | 65.5 | - | - | - | CHSTER32 | OKU0650004 |
| DW 02620140 | ER40 | 1:1 | 6000 | 50Nm | X | - | X | 98.16 | - | 54.5 | - | - | - | CHSTER40 | OKU0650004 |
| DW 02620240 | ER40 | 1:1 | 6000 | 50Nm | X | P=70bar | X | 98.16 | - | 65.5 | - | - | - | CHSTER40 | OKU0650004 |
| DW 02620325 | ERA25 | 1:1 | 6000 | 50Nm | X | - | X | 65 | - | 54.5 | - | - | CHUB27 | CHTAER25ZC | OKU0650004 |
| DW 02620425 | ERA25 | 1:1 | 6000 | 50Nm | X | P=70bar | X | 65 | - | 65.5 | - | - | CHUB27 | CHTAER25ZC | OKU0650004 |
| DW 02620516 | Ø16x17 | 1:1 | 6000 | 50Nm | X | - | X | - | 67.5 | 54.5 | 16 | 17 | - | CH_VTCROCE_M08 | OKU0650004 |
| DW 02620522 | Ø22x19 | 1:1 | 6000 | 50Nm | X | - | X | - | 67.5 | 54.5 | 22 | 19 | - | CH_VTCROCE_M10 | OKU0650004 |
| DW 02620527 | Ø27x21 | 1:1 | 6000 | 50Nm | X | - | X | - | 70 | 54.5 | 27 | 21 | - | CH_VTCROCE_M12 | OKU0650004 |

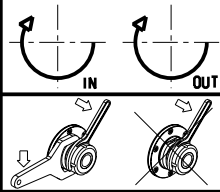
EMAG

MOD: VL4-V3

MODULO MOTORIZZATO ASSIALE H=85mm

Axial driven tool H=85mm

Axial angetriebenes Werkzeug H=85mm



M.T. srl

Via Casino Albini 480

Tel. 0541/956034-957884

Fax 0541/956341

47842 S. GIOVANNI IN M. (RN)

e-mail: mtma@mtmarchetti.com

<http://www.mtmarchetti.com>

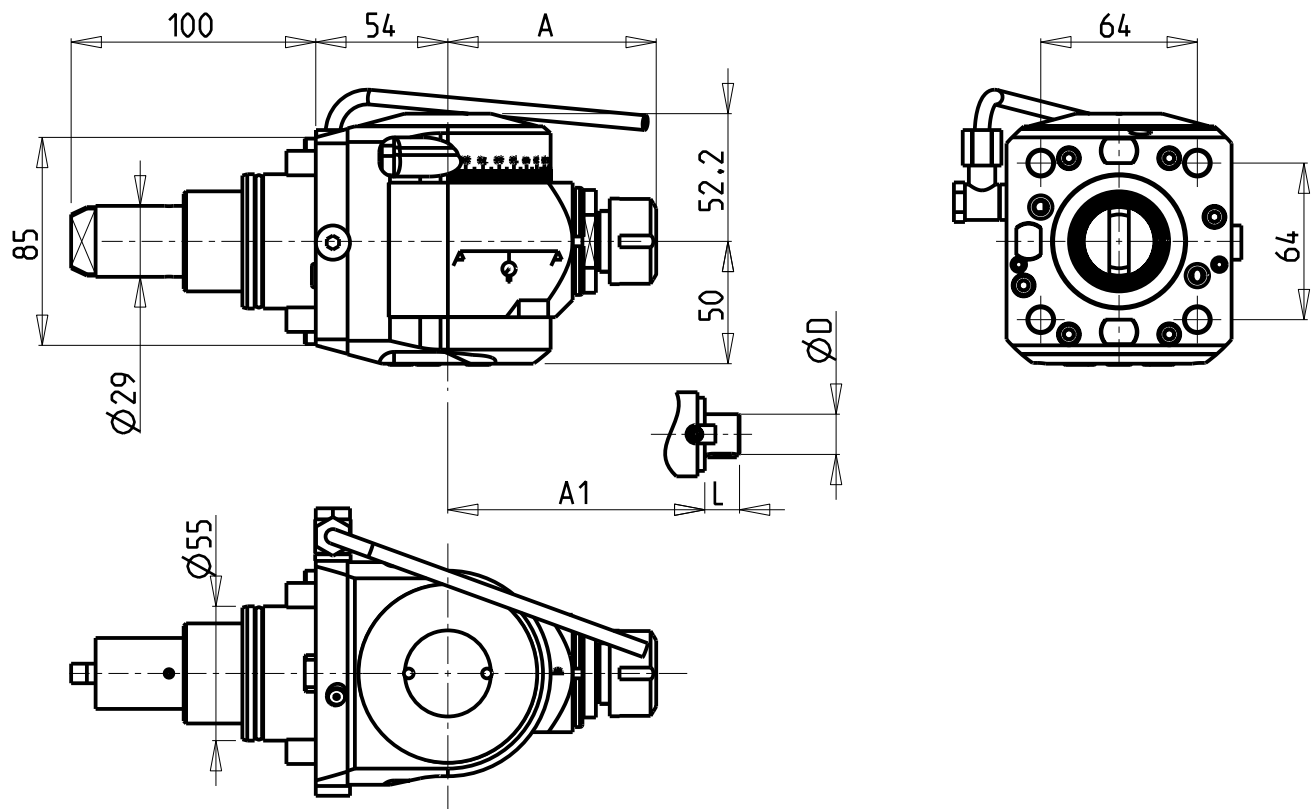
PRODUZIONE MODULI ROTANTI



PAGINA EMG150-2-31

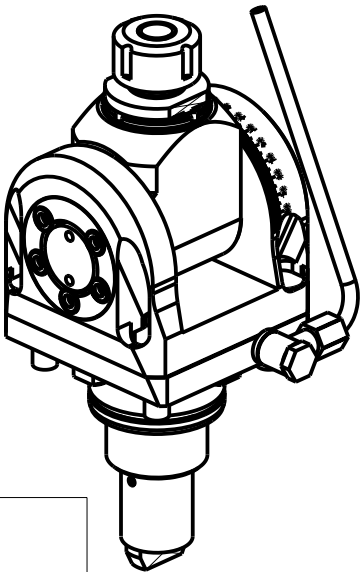
Subject to change without notice.

09/2019



ATTENZIONE - ATTENTION - ACHTUNG

- VERIFICARE LE MISURE DI INGOMBRO PER POSSIBILE INTERFERENZA SU ALCUNI MODELLI DI MACCHINE
- Please check the overall sizes for possible interferences on some machine models
- Bitte überprüfen sie das ausmass um mögliche interferenzen auf einigen maschinen modellen zu vermeiden



| Cod. MT | Mandrino Spindle Spindel | I | RPM | Coppia Max Max Torque Max Drehmoment | Reversibile lato mandrino/contromandrino Reversible sub/main spindle side Umkehrbare Spindelseite/ Gegenspindelseite | Lubrificazione est. Ext. coolant Aussenkuehlung | A | A1 | D | L | CHIAVI INCLUSE Keys included Schluessel inbegriffen | | |
|-------------|--------------------------------|-----|------|--|---|---|-------|----|------|------|---|--------|---------|
| DW 02650120 | ER20 | 1:1 | 6000 | 40Nm | X | X | 85.16 | - | - | - | CHSTER20 | CHUB36 | CHESL08 |
| DW 02650125 | ER25 | 1:1 | 6000 | 40Nm | X | X | 86.16 | - | - | - | CHSTER25 | CHUB36 | CHESL08 |
| DW 02650516 | Ø16x17 | 1:1 | 6000 | 40Nm | X | X | - | 65 | 16 | 17 | CH_VTCROCE_M08 | CHUB36 | CHESL08 |
| DW 02650522 | Ø22x19 | 1:1 | 6000 | 40Nm | X | X | - | 66 | 22 | 19 | CH_VTCROCE_M10 | CHUB36 | CHESL08 |
| DW 02650519 | Ø3/4"x3/4" | 1:1 | 6000 | 40Nm | X | X | - | 65 | 3/4" | 3/4" | CH_VTCROCE_M08 | CHUB36 | CHESL08 |

EMAG

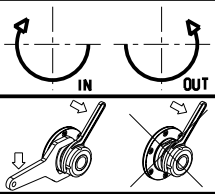
MOD: VL4-V3

MODULO MOTORIZZATO ORIENTABILE ±90° H=54mm

±90° adjustable angle driven tool H=54mm

Angetriebenes Werkzeug schwenkbar ±90° H=54mm

Subject to change without notice.



M.T. srl

Via Casino Albini 480

Tel. 0541/956034-957884

Fax 0541/956341

47842 S. GIOVANNI IN M. (RN)

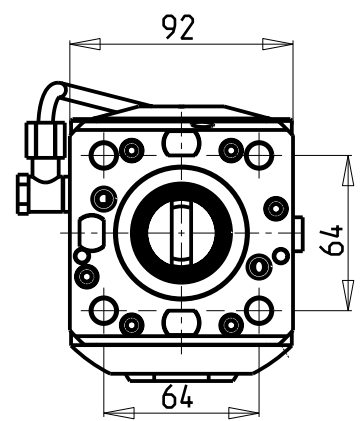
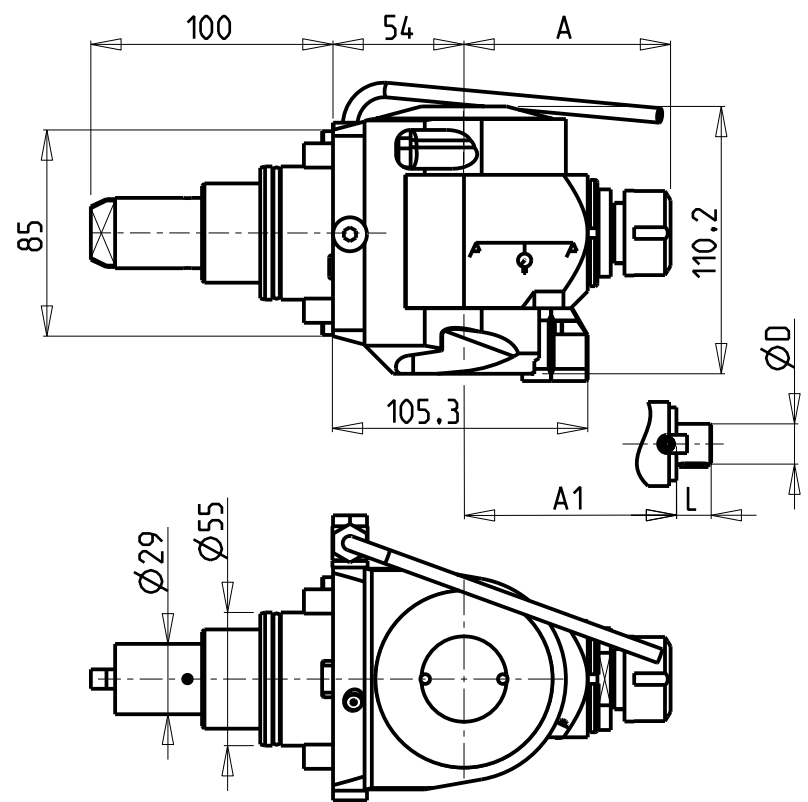
e-mail: mtma@mtmarchetti.com

<http://www.mtmarchetti.com>

PRODUZIONE MODULI ROTANTI

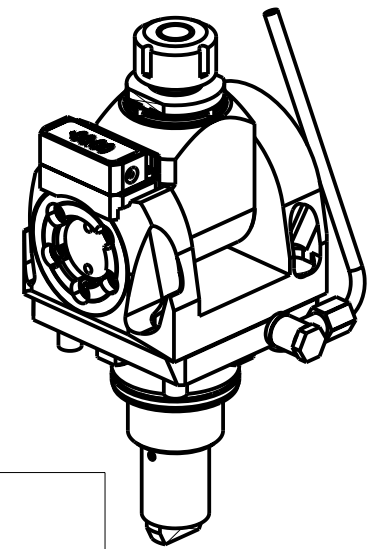


PAGINA EMG333-2-00



ATTENZIONE - ATTENTION - ACHTUNG

- VERIFICARE LE MISURE DI INGOMBRO PER POSSIBILE INTERFERENZA SU ALCUNI MODELLI DI MACCHINE
- Please check the overall sizes for possible interferences on some machine models
- Bitte überprüfen sie das ausmass um mögliche interferenzen auf einigen maschinen modellen zu vermeiden



| Cod. MT | Mandrino Spindle Spindel | I | RPM | Coppia Max Max Torque Max Drehmoment | Reversibile lato mandrino/contromandrino Reversible sub/main spindle side Umkehrbare Spindelseite/ Gegenspindelseite | Lubrificazione est. Ext. coolant Aussenkuehlung | A | A1 | D | L | CHIAVI INCLUSE Keys included Schluessel inbegriffen | | |
|------------|--------------------------------|-----|------|--|---|---|-------|----|------|------|---|--------|---------|
| DW02660120 | ER20 | 1:1 | 6000 | 40Nm | X | X | 85.16 | - | - | - | CHSTER20 | CHUB36 | CHESL08 |
| DW02660125 | ER25 | 1:1 | 6000 | 40Nm | X | X | 86.16 | - | - | - | CHSTER25 | CHUB36 | CHESL08 |
| DW02660516 | Ø16x17 | 1:1 | 6000 | 40Nm | X | X | - | 65 | 16 | 17 | CH_VTCROCE_M08 | CHUB36 | CHESL08 |
| DW02660522 | Ø22x19 | 1:1 | 6000 | 40Nm | X | X | - | 66 | 22 | 19 | CH_VTCROCE_M10 | CHUB36 | CHESL08 |
| DW02660519 | Ø3/4"x3/4" | 1:1 | 6000 | 40Nm | X | X | - | 65 | 3/4" | 3/4" | CH_VTCROCE_M08 | CHUB36 | CHESL08 |

EMAG

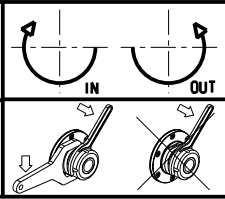
MOD: VL4-V3

MODULO MOTORIZZATO ORIENTABILE ±90° CON NONIO DIGITALE H=54mm

±90° adjustable angle driven tool with digital display H=54mm

Angetriebenes Werkzeug schwenkbar ±90° mit digital display H=54mm

Subject to change without notice.



M.T. srl

Via Casino Albini 480

Tel. 0541/956034-957884

Fax 0541/956341

47842 S. GIOVANNI IN M. (RN)

e-mail: mtma@mtmarchetti.com

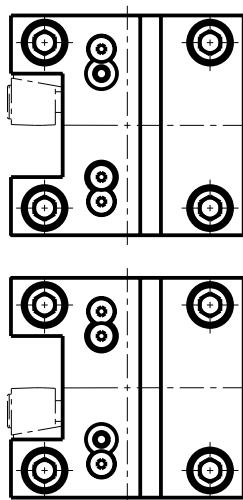
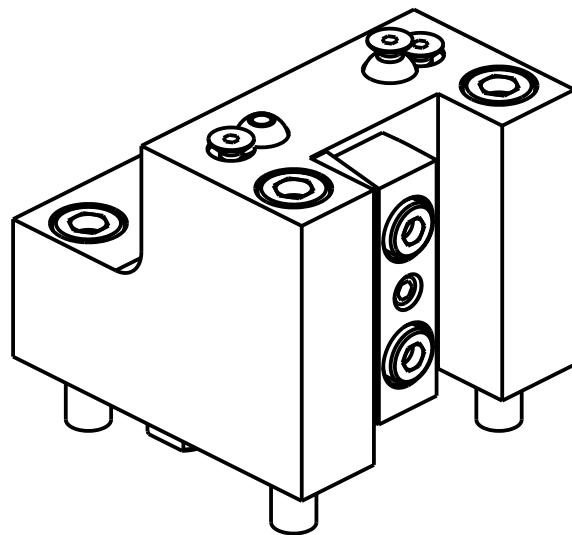
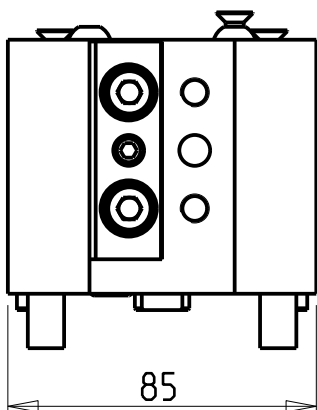
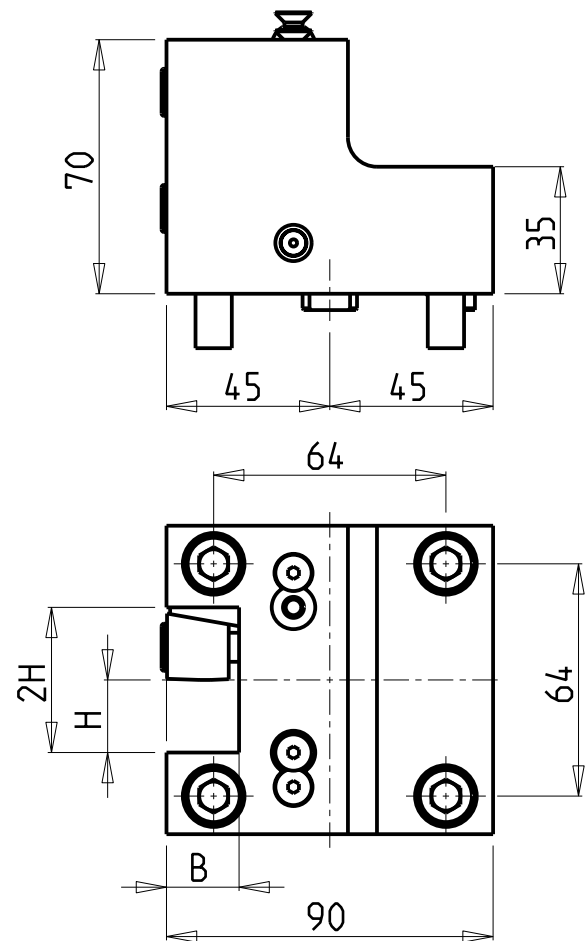
<http://www.mtmarchetti.com>

PRODUZIONE MODULI ROTANTI



PAGINA EMG333-2-01

09/2019



| Cod. MT | N°Utensili N°Tools N°Werkzeuge | Misure Dimensions Masse | B | H |
|------------|--------------------------------------|-------------------------------|----|----|
| DW02082000 | 1 | mm | 20 | 20 |

EMAG

MOD: VL4-V3

PORTAUTENSILE RADIALE SINGOLO QD=20mm

Radial single static tool QD=20mm

Radial Single-Werkzeughalter QD=20mm

Subject to change without notice.

M.T. srl

Via Casino Albini 480

Tel. 0541/956034-957884

Fax 0541/956341

47842 S. GIOVANNI IN M. (RN)

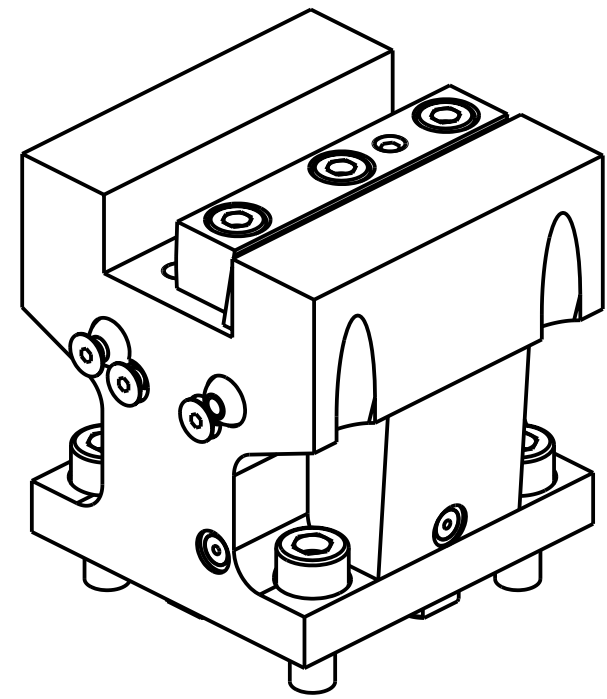
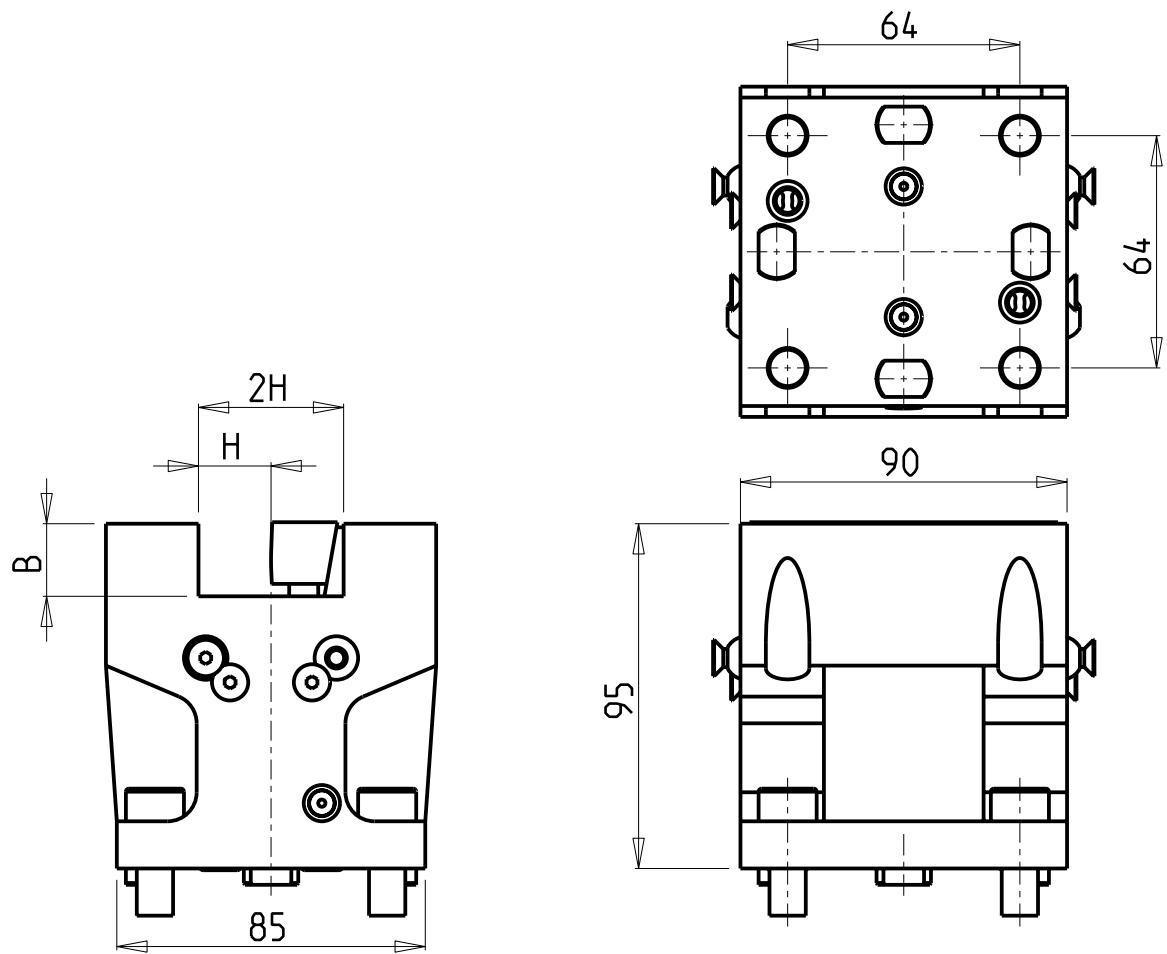
e-mail: mtma@mtmarchetti.com

<http://www.mtmarchetti.com>

PRODUZIONE MODULI ROTANTI



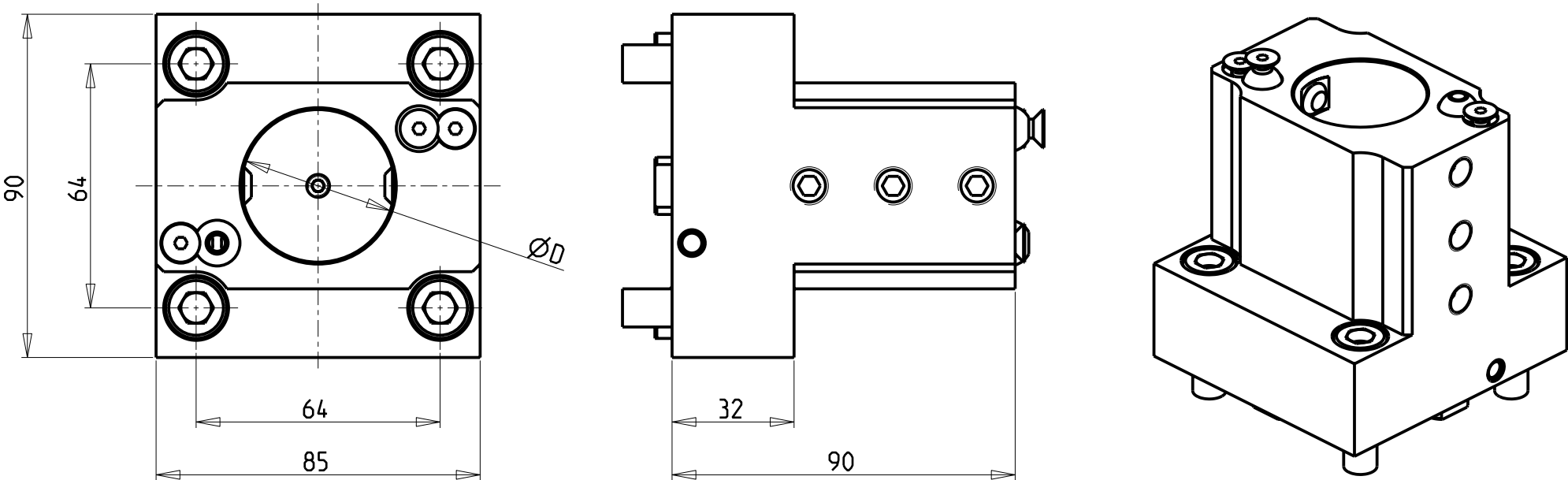
PAGINA EMG420-2-00



| Cod. MT | N°Utensili N°Tools N°Werkzeuge | Reversibile lato mandrino/controlmandrino Reversible sub/main spindle side Umkehrbare Spindel-seite/ Gegenspindel-seite | Misure Dimensions Masse | B | H |
|-------------|--------------------------------------|--|-------------------------------|----|----|
| DW 02072000 | 1 | X | mm | 20 | 20 |

| | | | |
|--|--|---|---|
| EMAG | | M.T. srl Via Casino Albini 480 Tel. 0541/956034-957884 Fax 0541/956341 47842 S. GIOVANNI IN M. (RN) e-mail: mtma@mtmarchetti.com http://www.mtmarchetti.com |  |
| MOD: VL4-V3 | | | |
| PORTAUTENSILE ASSIALE SINGOLO QD=20mm Axial single static tool QD=20mm Axial Single-Werkzeughalter QD=20mm | | | |
| PAGINA EMG550-2-00 | | | |

Subject to change without notice.



| Cod. MT | N°Utensili N°Tools N°Werkzeuge | Lubrificazione est. Ext. coolant Aussenkuehlung | Lubrificazione int. Coolant through Innenkuehlung | Misure Dimensions Masse | D |
|------------|--------------------------------------|---|---|-------------------------------|----|
| DW02064000 | 1 | X | X | mm | 40 |


PER BOCCOLE DI RIDUZIONE VEDI PAG. TBL150-1-00
FOR REDUCING BUSHINGS SEE PAGE TBL150-1-00
FUR REDUZIERBUCHSE SIEHE SEITE TBL150-1-00

EMAG
MOD: VL4-V3
PORTAUTENSILE RADIALE PER BARENO Ø40mm
Radial single boring bar holder Ø40mm
Radial Bohrhälter Ø40mm

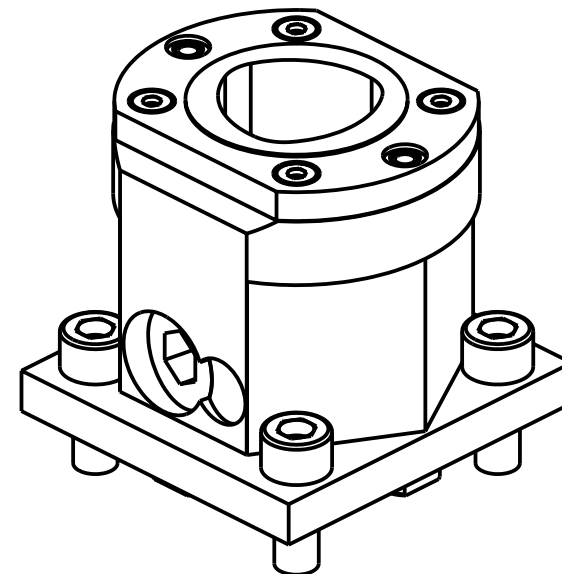
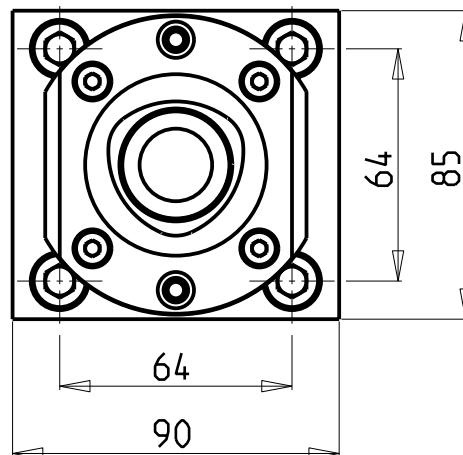
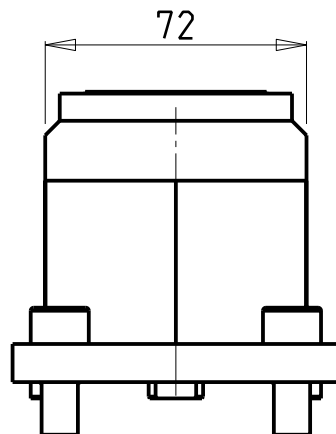
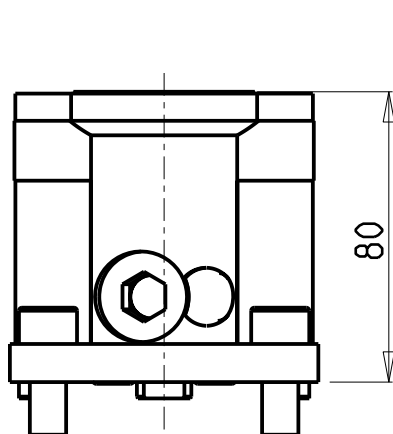
Subject to change without notice.

M.T. srl
Via Casino Albini 480
Tel. 0541/956034-957884
Fax 0541/956341
47842 S. GIOVANNI IN M. (RN)
e-mail: mtma@mtmarchetti.com
<http://www.mtmarchetti.com>

PRODUZIONE MODULI ROTANTI



PAGINA EMG575-2-00



VERSIONE DESTRA (RC)
RIGHT VERSION (RC)
RECHTE-VERSION (RC)



VERSIONE SINISTRA (LC)
LEFT VERSION (LC)
LINKE-VERSION (LC)



PER ORDINARE LA VERSIONE SX
AGGIUNGERE "LC" AL CODICE IN TABELLA.
ES: DW02675010 DIVENTA DW02675010LC

TO ORDER LEFT VERSION
ADD A "LC" IN THE CODE-CHARTS.
EXAMPLE: DW02675010 BECOMES DW02675010LC

UM DIE LINKE-VERSION ZU BESTELLEN, BEI DER
ARTIKELBEZEICHNUNG "LC" HINZUFUEGEN.
BEISPIEL: DW02675010 WIRD DANN DW02675010LC

| Cod. MT | N°Utensili N°Tools N°Werkzeuge | Lubrificazione int. Coolant through Innenkuehlung | TAGLIA Size Masse |
|------------|--------------------------------------|---|-------------------------|
| DW02675010 | 1 | X | C5 |

EMAG

MOD: VL4-V3

PORTAUTENSILE RADIALE SINGOLO MT CAPTO

Radial single static tool MT CAPTO

Radial Single-Werkzeughalter MT CAPTO

Subject to change without notice.

M.T. srl

Via Casino Albini 480
Tel. 0541/956034-957884
Fax 0541/956341
47842 S. GIOVANNI IN M. (RN)
e-mail: mtma@mtmarchetti.com
<http://www.mtmarchetti.com>

PRODUZIONE MODULI ROTANTI



PAGINA EMG575-B-50

09/2019