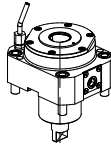
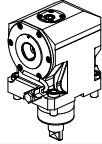
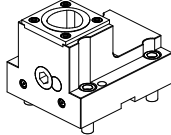
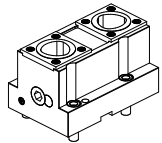
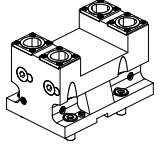
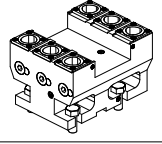
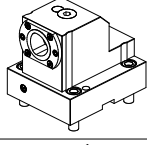
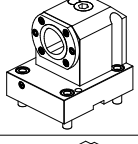
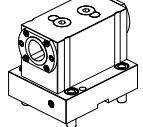
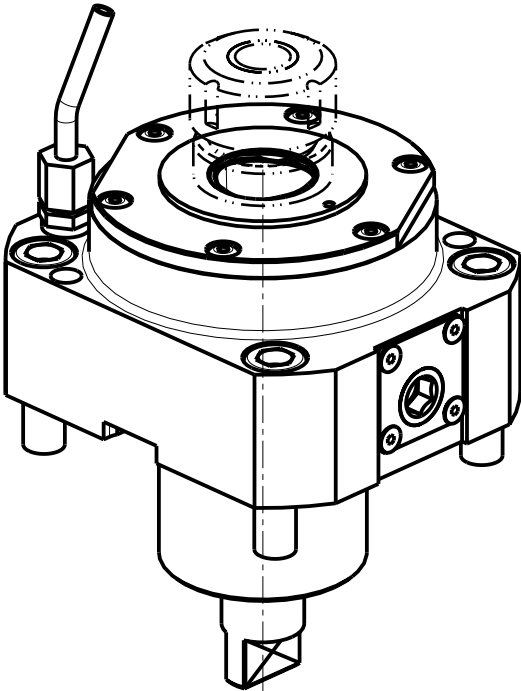
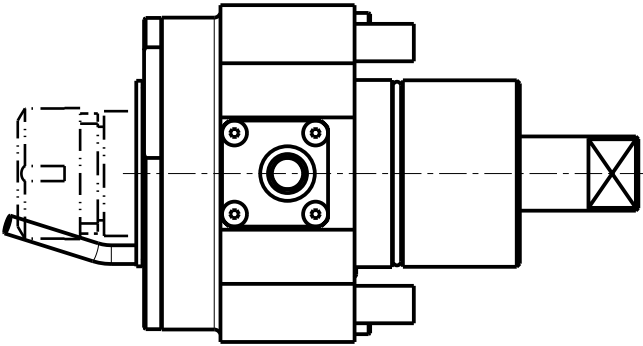
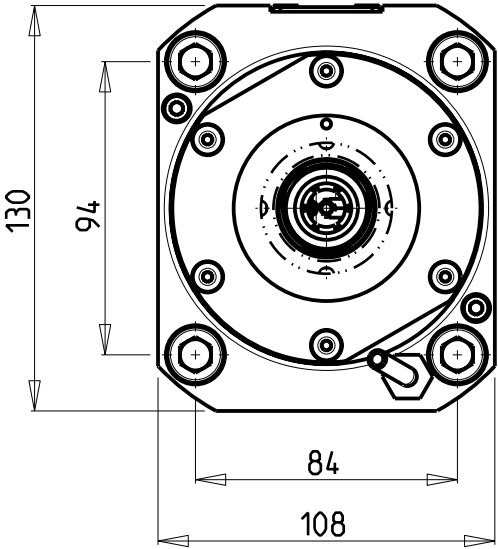
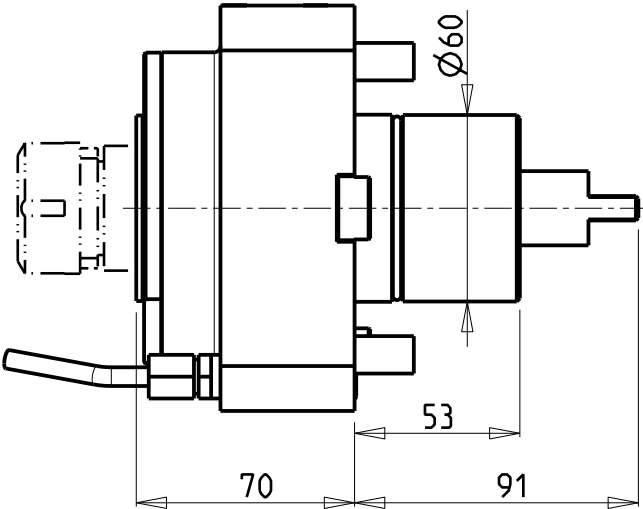


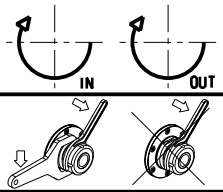
		PAGINA Page Seite
<b>MODULO MOTORIZZATO RADIALE MT CAPTO</b> Radial driven tool MT CAPTO Radial angetriebenes Werkzeug MT CAPTO		GDW 010.A.40
<b>MODULO MOTORIZZATO ASSIALE MT CAPTO</b> Axial driven tool MT CAPTO Axial angetriebenes Werkzeug COROMANT CAPTO®		GDW 150.A.40
<b>PORTAUTENSILE RADIALE SINGOLO MT CAPTO</b> Radial single static tool MT CAPTO Radial Single-Werkzeughalter MT CAPTO		GDW 420.A.40
<b>PORTAUTENSILE RADIALE DOPPIO MT CAPTO</b> Radial double static tool MT CAPTO Radial doppel-Werkzeughalter MT CAPTO		GDW 450.A.40
<b>PORTAUTENSILE RADIALE DOPPIO SOVRAPP. 2+2 POS. MT CAPTO</b> Radial double 2+2 upright position static tool MT CAPTO Radial Doppel-Werkzeughalter 2+2 Positionen ueberlagert MT CAPTO		GDW 460.A.30
<b>PORTAUTENSILE RADIALE DOPPIO SOVRAPP. 3+3 POS. MT CAPTO</b> Radial double 3+3 upright position static tool MT CAPTO Radial Doppel-Werkzeughalter 3+3 Positionen ueberlagert MT CAPTO		GDW 465.A.30
<b>PORTAUTENSILE ASSIALE SINGOLO MT CAPTO</b> Axial single static tool MT CAPTO Axial Single-Werkzeughalter MT CAPTO		GDW 550.A.40
<b>PORTAUTENSILE ASSIALE SINGOLO ARRETRATO MT CAPTO</b> Axial single rear set static tool MT CAPTO Axial Single-Werkzeughalter zurueckversetzt MT CAPTO		GDW 555.A.40
<b>PORTAUTENSILE ASSIALE BISPORGENTE MT CAPTO</b> Axial opposite face twin static tool MT CAPTO Axial Werkzeughalter halb vorspringend mit COROMANT CAPTO®		GDW 570.A.40

Distributeur/ importateur : Crylax 0033 450 960920 - [info@crylax.com](mailto:info@crylax.com)




Cod. MT	TAGLIA Size Masse	I	RPM	Coppia Max Max Torque Max Drehmoment	Lubr.esterna Ext. coolant Aussenkuehlung
GDW 0370140	C4	1:1	6000	70Nm	X
GDW 0370150	C5	1:1	6000	70Nm	X

GOODWAY  
MOD: GS2000/2600/2800/3000/3300/3600/4000 12ST. - GMS2000 12ST.  
MODULO MOTORIZZATO RADIALE MT CAPTO  
Radial driven tool MT CAPTO  
Radial angetriebenes Werkzeug MT CAPTO

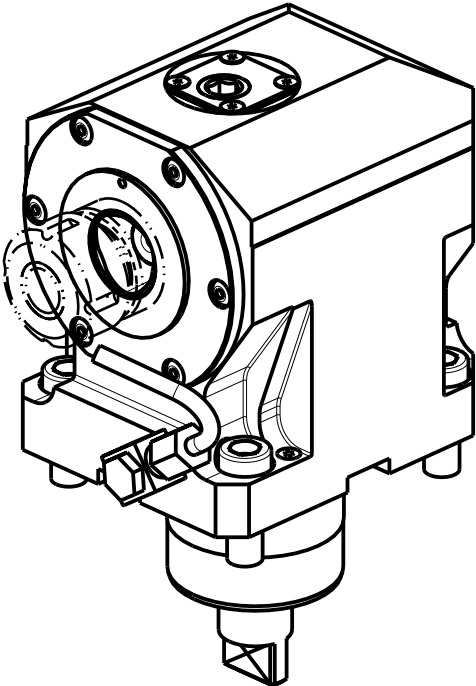
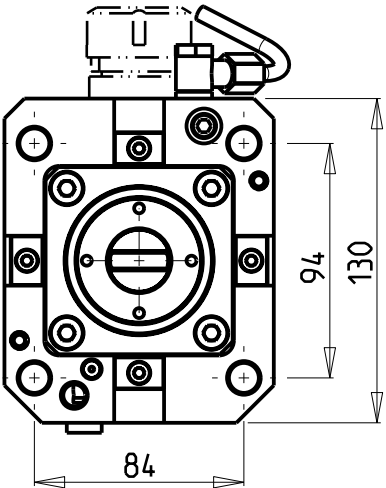
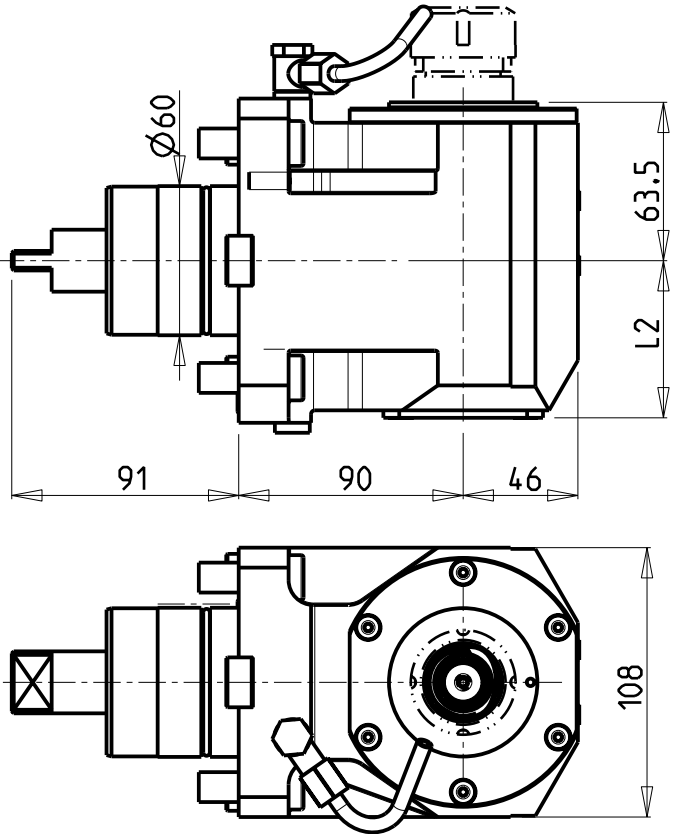


**M.T. srl**  
Via Casino Albini 480  
Tel. 0541/956034-957884  
Fax 0541/956341  
47842 S. GIOVANNI IN M. (RN)  
e-mail: [mtma@mtmarchetti.com](mailto:mtma@mtmarchetti.com)  
<http://www.mtmarchetti.com>

PRODUZIONE MODULI ROTANTI

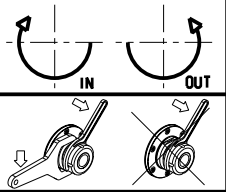


PAGINA GDW 010-A-40



Cod. MT	TAGLIA Size Masse	I	RPM	Coppia Max Max Torque Max Drehmoment	Reversibile lato mandrino/contromandrino Reversible sub/main spindle side Umkehrbare Spindel-seite/ Gegenspindel-seite	Lubr.interna Coolant through Innenkuehlung	Lubr.esterna Ext. coolant Aussenkuehlung	L2
GDW 0360140	C4	1:1	6000	70Nm	X		X	63
GDW 0360240	C4	1:1	6000	70Nm	X	P=70bar	X	75.5
GDW 0360150	C5	1:1	6000	70Nm	X		X	63
GDW 0360250	C5	1:1	6000	70Nm	X	P=70bar	X	75.5

GOODWAY  
MOD: GS2000/2600/2800/3000/3300/3600/4000 12ST. - GMS2000 12ST.  
MODULO MOTORIZZATO ASSIALE MT CAPTO  
Axial driven tool MT CAPTO  
Axial angetriebenes Werkzeug MT CAPTO

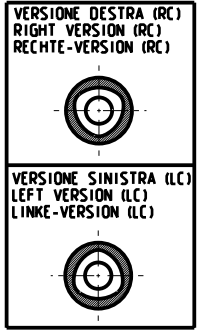
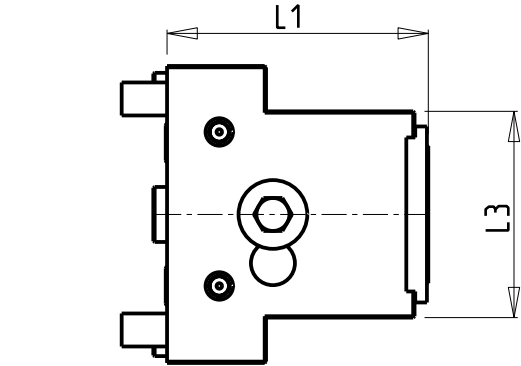
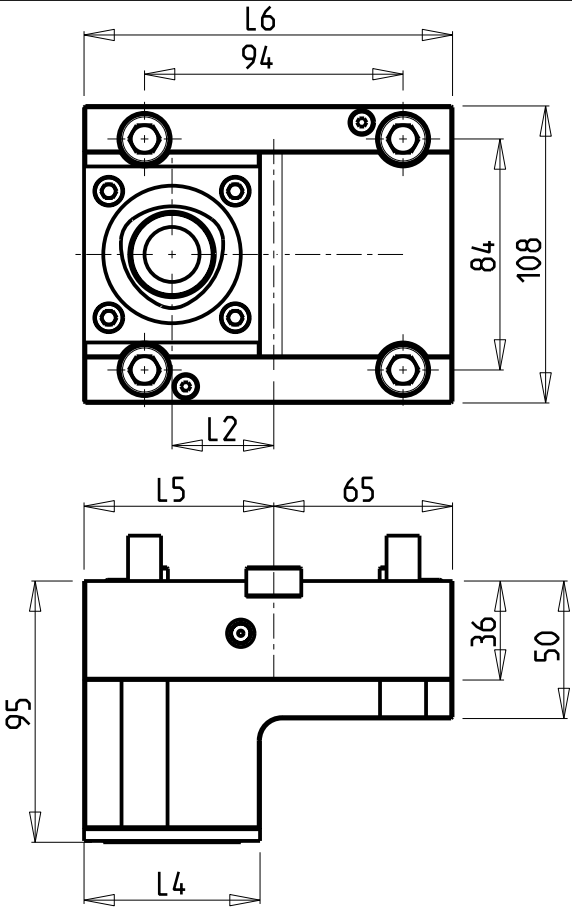


**M.T. srl**  
Via Casino Albini 480  
Tel. 0541/956034-957884  
Fax 0541/956341  
47842 S. GIOVANNI IN M. (RN)  
e-mail: [mtma@mtmarchetti.com](mailto:mtma@mtmarchetti.com)  
<http://www.mtmarchetti.com>

PRODUZIONE MODULI ROTANTI



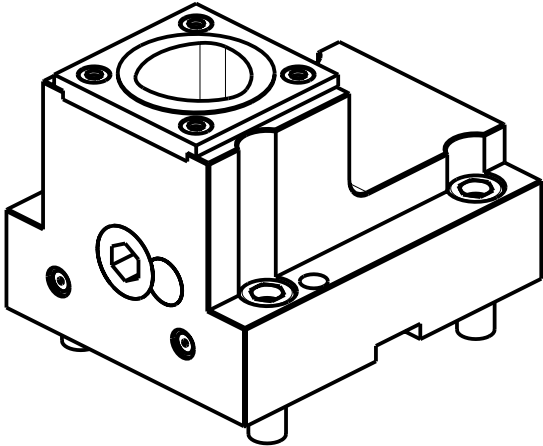
PAGINA GDW 150-A-40



PER ORDINARE LA VERSIONE SX  
AGGIUNGERE "LC" AL CODICE IN TABELLA.  
ES: MNL0464010 DIVENTA MNL0464010LC

TO ORDER LEFT VERSION  
ADD A "LC" IN THE CODE-CHARTS.  
EXAMPLE: MNL0464010 BECOMES MNL0464010LC

UM DIE LINKE-VERSION ZU BESTELLEN, BEI DER  
ARTIKELBEZEICHNUNG "LC" HINZUFUEGEN.  
BEISPIEL: MNL0464010 WIRD DANN MNL0464010LC



Cod. MT	N°Utensili N°Tools N°Werkzeuge	Lubrificazione int. Coolant through Innenkuehlung	Reversibile lato mandrino/contromandrino Reversible sub/main spindle side Umkehrbare Spindel-seite/ Gegenspindel-seite	TAGLIA Size Masse	L1	L2	L3	L4	L5	L6
GDW0384010	1	X	X	C4	90	45	63	48	69	134
GDW0385010	1	X	X	C5	95	37	75	64	69	134
GDW0385015	1	X	X	C5	95	62.5	75	64	94.5	159.5

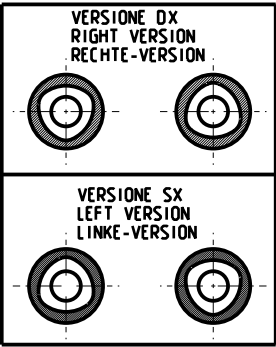
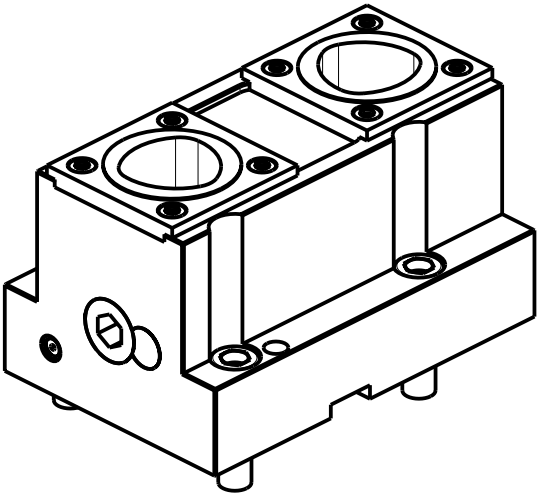
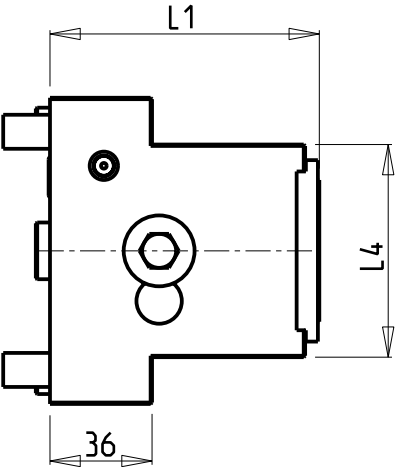
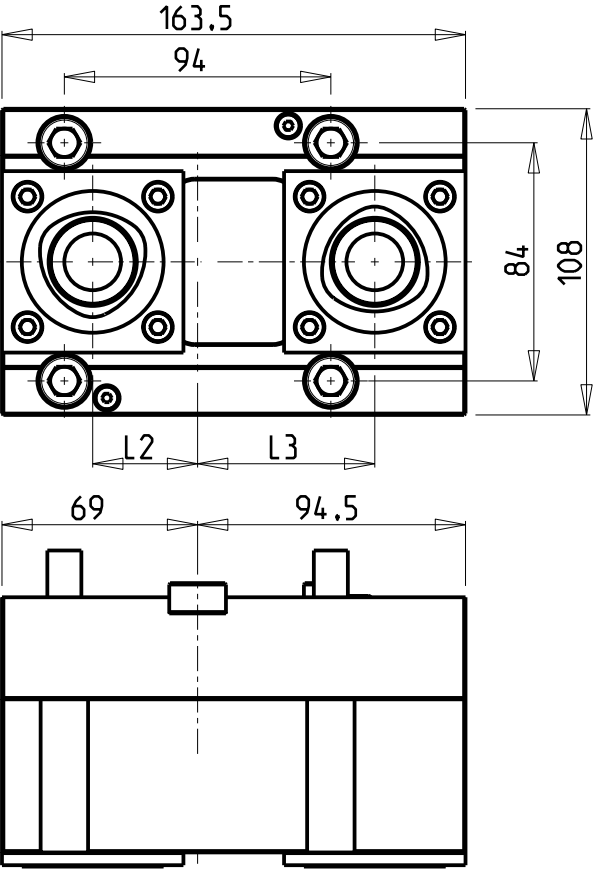
GOODWAY  
MOD: GS2000/2600/2800/3000/3300/3600/4000 12ST. - GMS2000 12ST.  
PORTAUTENSILE RADIALE SINGOLO MT CAPTO  
Radial single static tool MT CAPTO  
Radial Single-Werkzeughalter MT CAPTO

Subject to change without notice.

**M.T. srl**  
Via Casino Albini 480  
Tel. 0541/956034-957884  
Fax 0541/956341  
47842 S. GIOVANNI IN M. (RN)  
e-mail: [mtma@mtmarchetti.com](mailto:mtma@mtmarchetti.com)  
<http://www.mtmarchetti.com>

PRODUZIONE MODULI ROTANTI

PAGINA GDW420-A-40



PER ORDINARE LA VERSIONE SX  
AGGIUNGERE "LC" AL CODICE IN TABELLA.  
ES: MNL0464010 DIVENTA MNL0464010LC

TO ORDER LEFT VERSION  
ADD A "LC" IN THE CODE-CHARTS.  
EXAMPLE: MNL0464010 BECOMES MNL0464010LC

UM DIE LINKE-VERSION ZU BESTELLEN, BEI DER  
ARTIKELBEZEICHNUNG "LC" HINZUFUEGEN.  
BEISPIEL: MNL0464010 WIRD DANN MNL0464010LC


Cod. MT	N°Utensili N°Tools N°Werkzeuge	Lubrificazione int. Coolant through Innenkuehlung	TAGLIA Size Masse	L1	L2	L3	L4
GDW 0394020	2	X	C4	90	45	70.5	63
GDW 0395020	2	X	C5	95	37	62.5	75

GOODWAY  
MOD: GS2000/2600/2800/3000/3300/3600/4000 12ST. - GMS2000 12ST.  
PORTAUTENSILE RADIALE DOPPIO MT CAPTO  
Radial double static tool MT CAPTO  
Radial Doppel-Werkzeughalter MT CAPTO

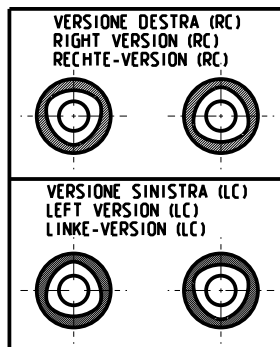
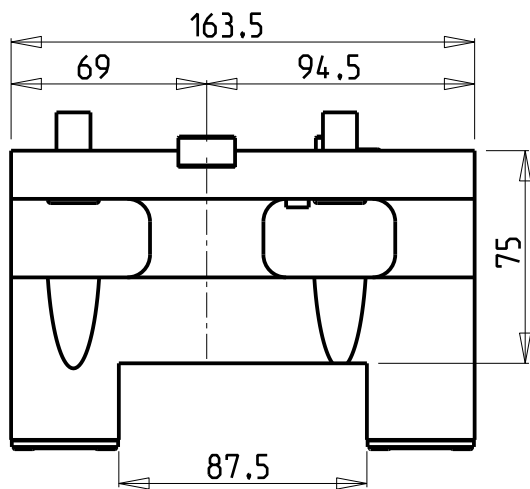
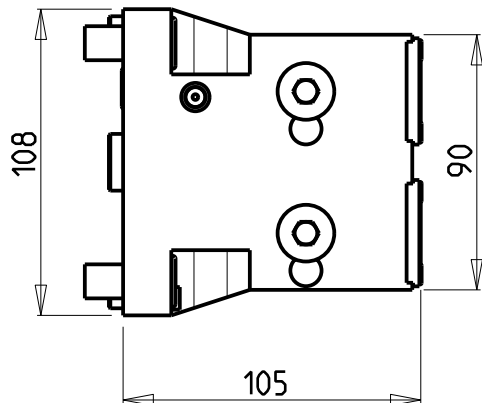
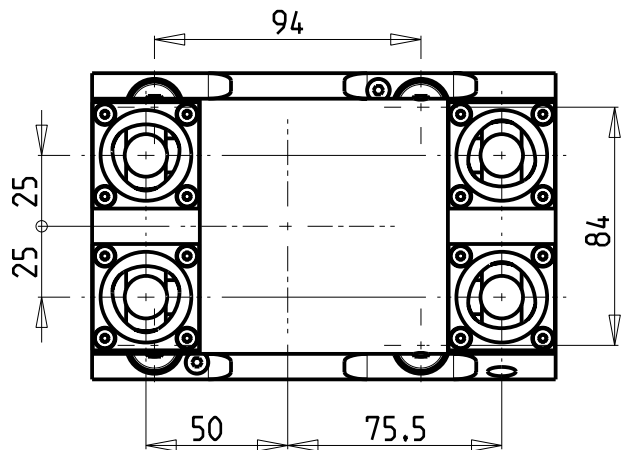
Subject to change without notice.

**M.T. srl**  
Via Casino Albini 480  
Tel. 0541/956034-957884  
Fax 0541/956341  
47842 S. GIOVANNI IN M. (RN)  
e-mail: [mtma@mtmarchetti.com](mailto:mtma@mtmarchetti.com)  
<http://www.mtmarchetti.com>

PRODUZIONE MODULI ROTANTI



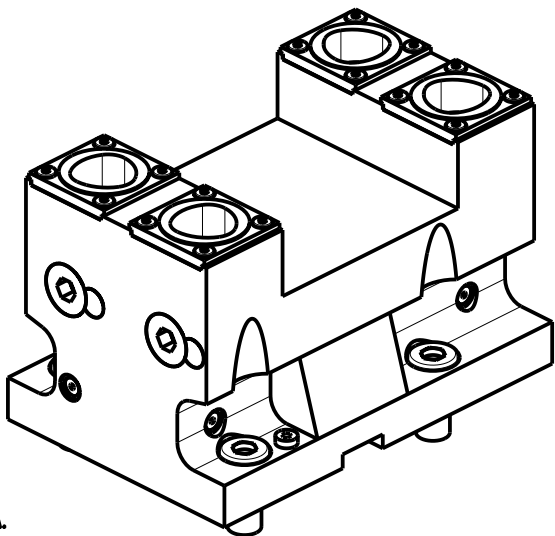
PAGINA GDW 450-A-40



PER ORDINARE LA VERSIONE SX  
AGGIUNGERE "LC" AL CODICE IN TABELLA.  
ES: MNL0464010 DIVENTA MNL0464010LC

TO ORDER LEFT VERSION  
ADD A "LC" IN THE CODE-CHARTS.  
EXAMPLE: MNL0464010 BECOMES MNL0464010LC

UM DIE LINKE-VERSION ZU BESTELLEN, BEI DER  
ARTIKELBEZEICHNUNG "LC" HINZUFUEGEN.  
BEISPIEL: MNL0464010 WIRD DANN MNL0464010LC



Cod. MT	N°Utensili N°Tools N°Werkzeuge	Lubrificazione int. Coolant through Innenkuehlung	TAGLIA Size Masse
GDW0403240	4	X	C3

GOODWAY  
MOD: GS2000/2600/2800/3000/3300/3600/4000 12ST.  
PORTAUTENSILE RADIALE DOPPIO SOVRAPPOSTO 2+2 POSIZIONI MT CAPTO  
Radial double 2+2 upright position static tool MT CAPTO  
Radial Doppel-Werkzeughalter 2+2 Positionen ueberlagert MT CAPTO

Subject to change without notice.

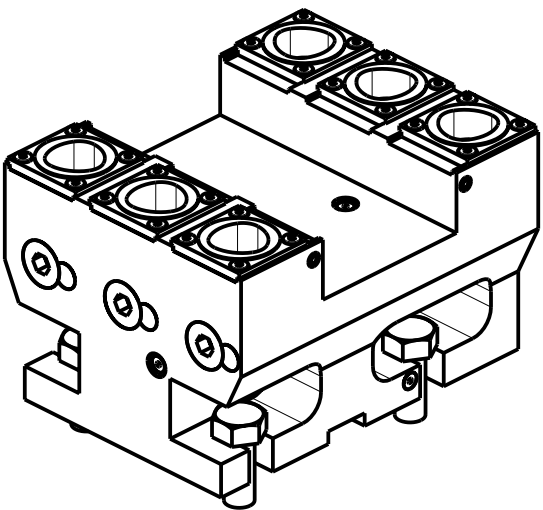
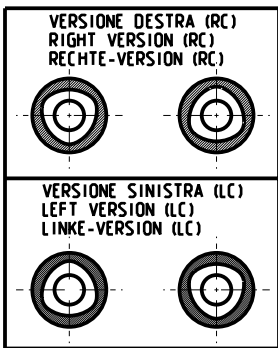
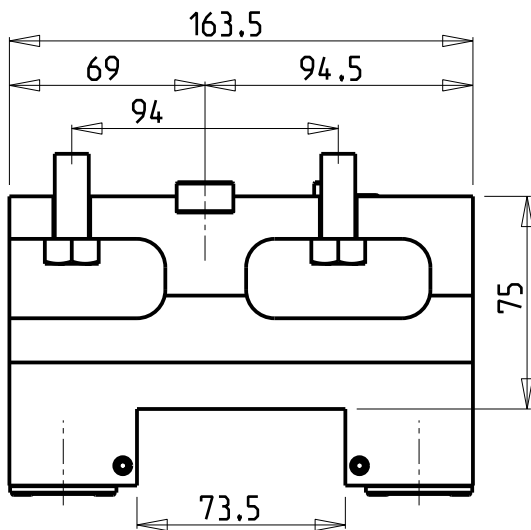
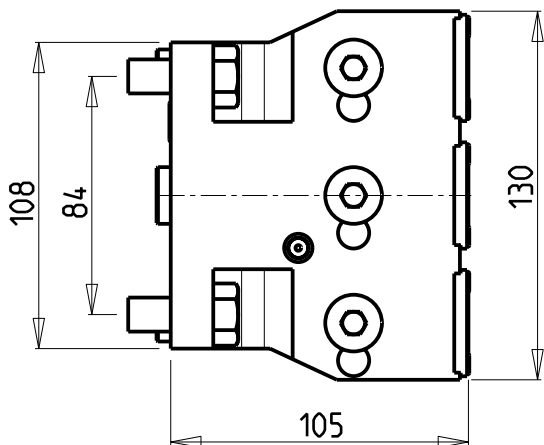
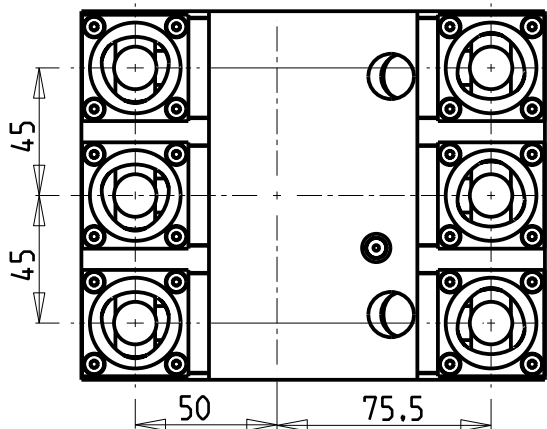
M.T. srl

Via Casino Albini 480  
Tel. 0541/956034-957884  
Fax 0541/956341  
47842 S. GIOVANNI IN M. (RN)  
e-mail: [mtma@mtmarchetti.com](mailto:mtma@mtmarchetti.com)  
<http://www.mtmarchetti.com>

PRODUZIONE MODULI ROTANTI



PAGINA GDW460-A-30



PER ORDINARE LA VERSIONE SX  
AGGIUNGERE "LC" AL CODICE IN TABELLA.  
ES: MNL0464010 DIVENTA MNL0464010LC

TO ORDER LEFT VERSION  
ADD A "LC" IN THE CODE-CHARTS.  
EXAMPLE: MNL0464010 BECOMES MNL0464010LC


UM DIE LINKE-VERSION ZU BESTELLEN, BEI DER  
ARTIKELBEZEICHNUNG "LC" HINZUFUEGEN.  
BEISPIEL: MNL0464010 WIRD DANN MNL0464010LC

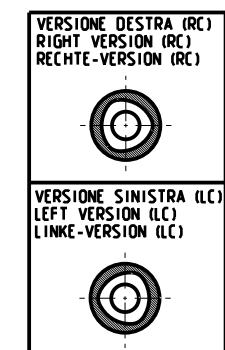
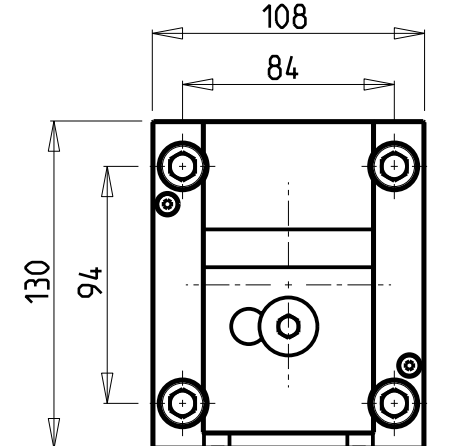
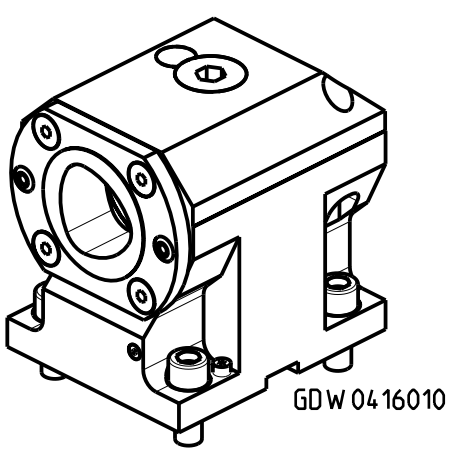
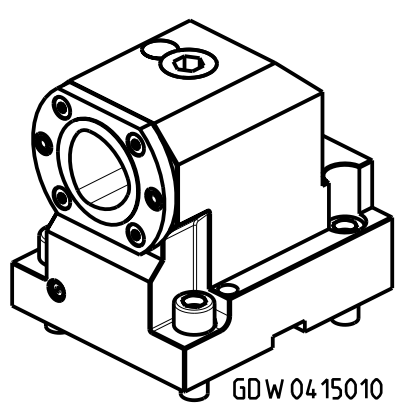
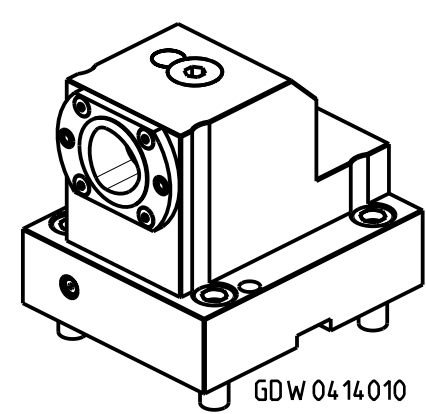
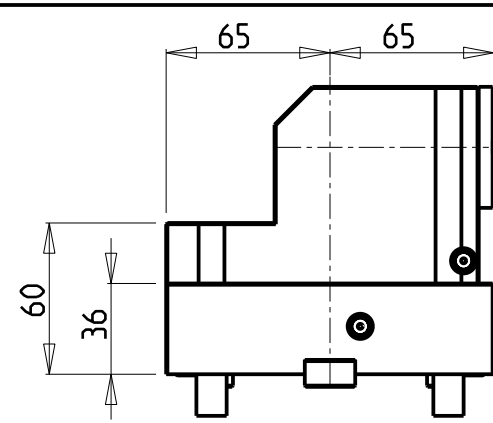
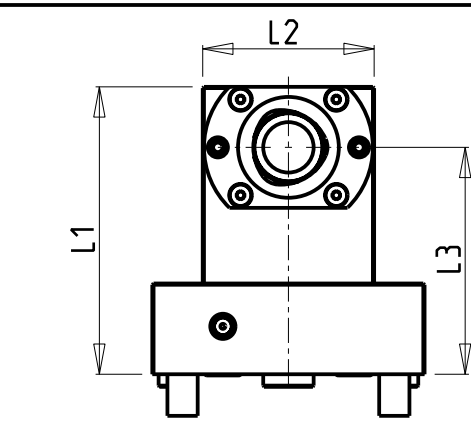
Cod. MT	N°Utensili N°Tools N°Werkzeuge	Lubrificazione int. Coolant through Innenkuehlung	TAGLIA Size Masse
GDW0403260	6	X	C3

GOODWAY  
MOD: GS2000/2600/2800/3000/3300/3600/4000 12ST.  
PORTAUTENSILE RADIALE DOPPIO SOVRAPPOSTO 3+3 POSIZIONI MT CAPTO  
Radial double 3+3 upright position static tool MT CAPTO  
Radial Doppel-Werkzeughalter 3+3 Positionen ueberlagert MT CAPTO

Subject to change without notice.

**M.T. srl**  
Via Casino Albini 480  
Tel. 0541/956034-957884  
Fax 0541/956341  
47842 S. GIOVANNI IN M. (RN)  
e-mail: [mtma@mtmarchetti.com](mailto:mtma@mtmarchetti.com)  
<http://www.mtmarchetti.com>

PRODUZIONE MODULI ROTANTI  
  
PAGINA GDW465-A-30



**PER ORDINARE LA VERSIONE SX  
AGGIUNGERE "LC" AL CODICE IN TABELLA.  
ES: MNL0464010 DIVENTA MNL0464010LC**


**TO ORDER LEFT VERSION  
ADD A "LC" IN THE CODE-CHARTS.  
EXAMPLE: MNL0464010 BECOMES MNL0464010LC**

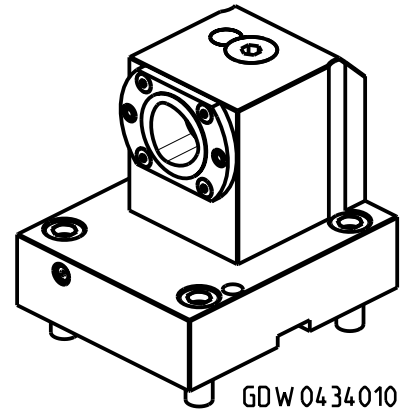
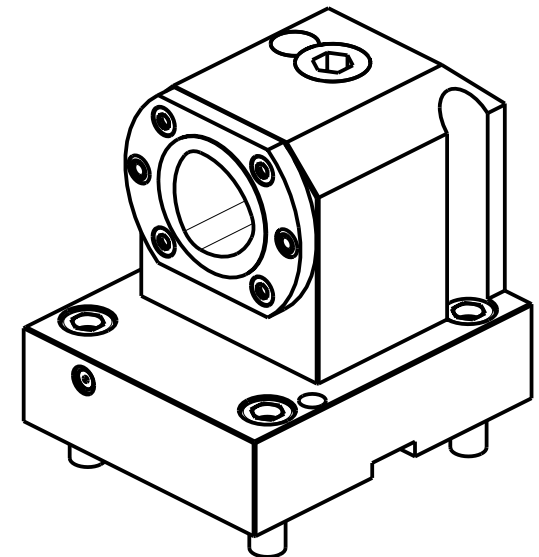
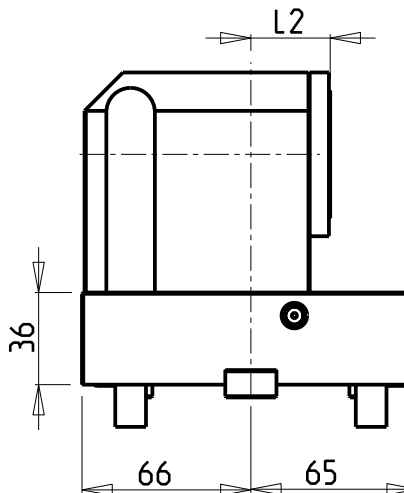
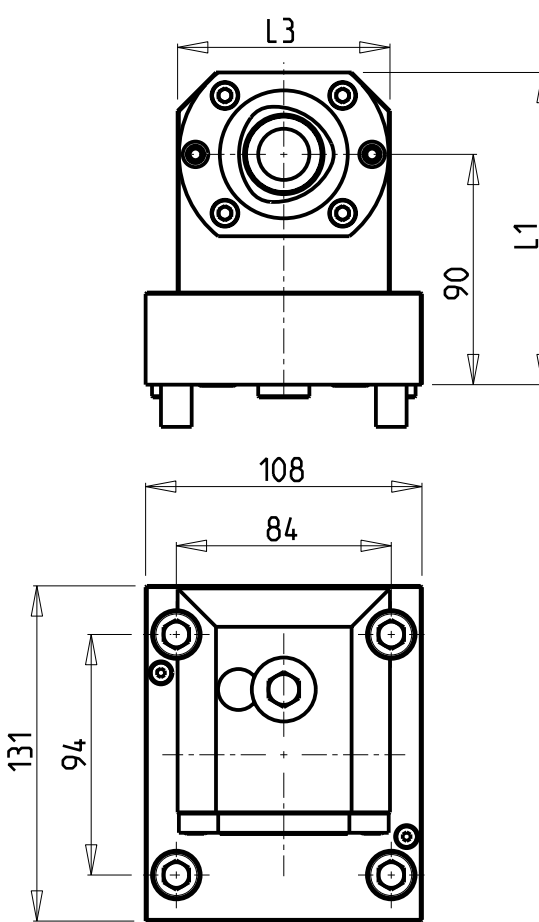
**UM DIE LINKE-VERSION ZU BESTELLEN, BEI DER  
ARTIKELBEZEICHNUNG "LC" HINZUFUEGEN.  
BEISPIEL: MNL0464010 WIRD DANN MNL0464010LC**

Cod. MT	N°Utensili N°Tools N°Werkzeuge	Lubrificazione int. Coolant through Innenkuehlung	Reversibile lato mandrino/contromandrino Reversible sub/main spindle side Umkehrbare Spindel-seite/ Gegenspindel-seite	TAGLIA Size Masse	L1	L2	L3
GDW 0414010	1	X	X	C4	114	68	90
GDW 0415010	1	X	X	C5	122	83	90
GDW 0415015	1	X	X	C5	152	83	120
GDW 0416010	1	X	X	C6	132	108	90

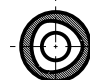
GOODWAY  
MOD: GS2000/2600/2800/3000/3300/3600/4000 12ST. - GMS2000 12ST.  
PORTAUTENSILE ASSIALE SINGOLO MT CAPTO  
Axial single static tool MT CAPTO  
Axial Single-Werkzeughalter MT CAPTO

**M.T. srl**  
Via Casino Albini 480  
Tel. 0541/956034-957884  
Fax 0541/956341  
47842 S. GIOVANNI IN M. (RN)  
e-mail: [mtma@mtmarchetti.com](mailto:mtma@mtmarchetti.com)  
<http://www.mtmarchetti.com>

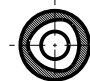
PRODUZIONE MODULI ROTANTI  
  
PAGINA GDW550-A-40



VERSIONE DESTRA (RC)  
RIGHT VERSION (RC)  
RECHTE-VERSION (RC)



VERSIONE SINISTRA (LC)  
LEFT VERSION (LC)  
LINKE-VERSION (LC)

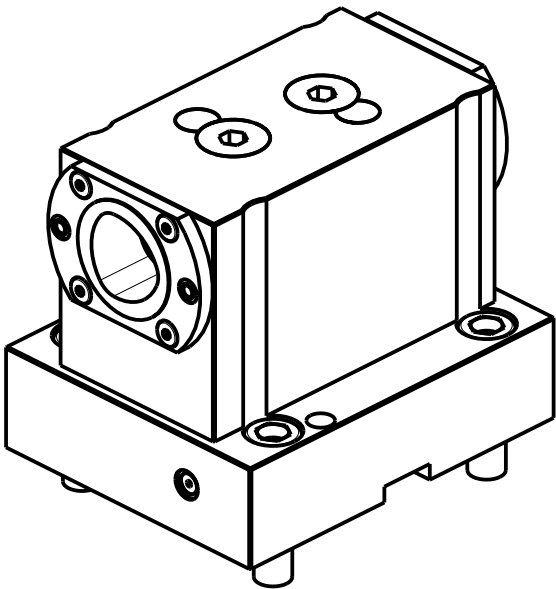
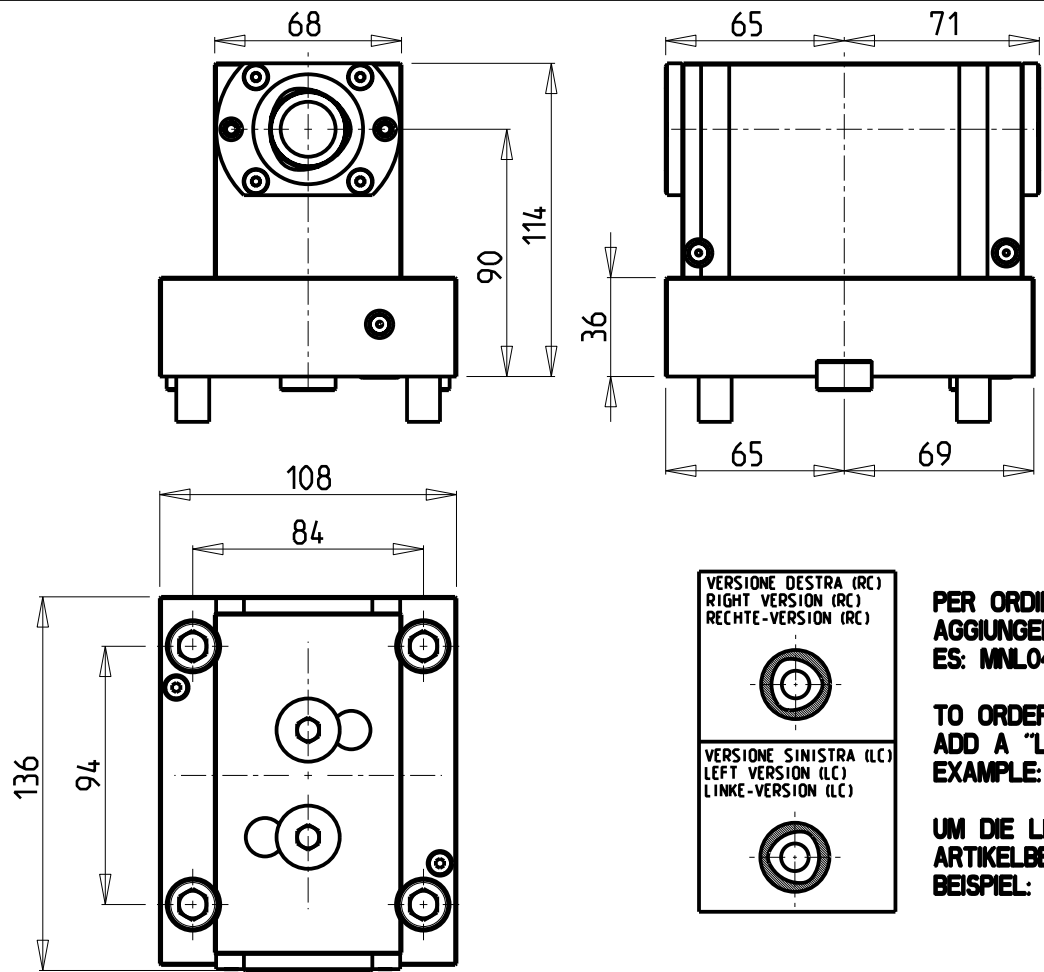


PER ORDINARE LA VERSIONE SX  
AGGIUNGERE "LC" AL CODICE IN TABELLA.  
ES: MNL0464010 DIVENTA MNL0464010LC

TO ORDER LEFT VERSION  
ADD A "LC" IN THE CODE-CHARTS.  
EXAMPLE: MNL0464010 BECOMES MNL0464010LC

UM DIE LINKE-VERSION ZU BESTELLEN, BEI DER  
ARTIKELBEZEICHNUNG "LC" HINZUFUEGEN.  
BEISPIEL: MNL0464010 WIRD DANN MNL0464010LC

Cod. MT	N°Utensili N°Tools N°Werkzeuge	Lubrificazione int. Coolant through Innenkuehlung	Reversibile lato mandrino/contromandrino Reversible sub/main spindle side Umkehrbare Spindel-seite/ Gegenspindel-seite	TAGLIA Size Masse	L1	L2	L3
GDW0434010	1	X	X	C4	114	21	68
GDW0435010	1	X	X	C5	122	31	83



**PER ORDINARE LA VERSIONE SX  
AGGIUNGERE "LC" AL CODICE IN TABELLA.  
ES: MNL0464010 DIVENTA MNL0464010LC**

**TO ORDER LEFT VERSION  
ADD A "LC" IN THE CODE-CHARTS.  
EXAMPLE: MNL0464010 BECOMES MNL0464010LC**


**UM DIE LINKE-VERSION ZU BESTELLEN, BEI DER  
ARTIKELBEZEICHNUNG "LC" HINZUFUEGEN.  
BEISPIEL: MNL0464010 WIRD DANN MNL0464010LC**

Cod. MT	N°Utensili N°Tools N°Werkzeuge	Lubrificazione int. Coolant through Innenkuehlung	Reversibile lato mandrino/contromandrino Reversible sub/main spindle side Umkehrbare Spindelseite/ Gegenspindelseite	TAGLIA Size Masse
GDW0424020	1+1	X	X	C4

**GOODWAY**  
MOD: GS2000/2600/2800/3000/3300/3600/4000 12ST. - GMS2000 12ST.  
PORTAUTENSILE ASSIALE BISPORGENTE MT CAPTO  
Axial opposite face twin static tool MT CAPTO  
Axial Werkzeughalter halb vorspringend mit MT CAPTO

**M.T. srl**  
Via Casino Albini 480  
Tel. 0541/956034-957884  
Fax 0541/956341  
47842 S. GIOVANNI IN M. (RN)  
e-mail: [mtma@mtmarchetti.com](mailto:mtma@mtmarchetti.com)  
<http://www.mtmarchetti.com>

PRODUZIONE MODULI ROTANTI



PAGINA GDW570-A-40

Distributeur/ importateur : Crylax 0033 450 960920 - [info@crylax.com](mailto:info@crylax.com)