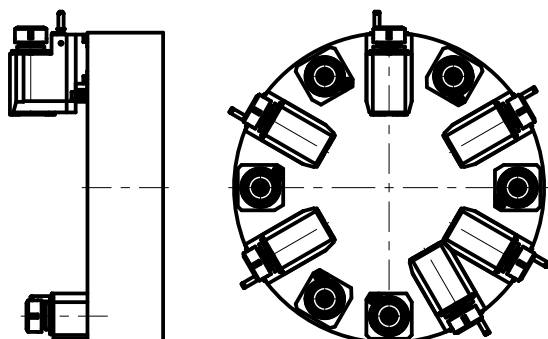
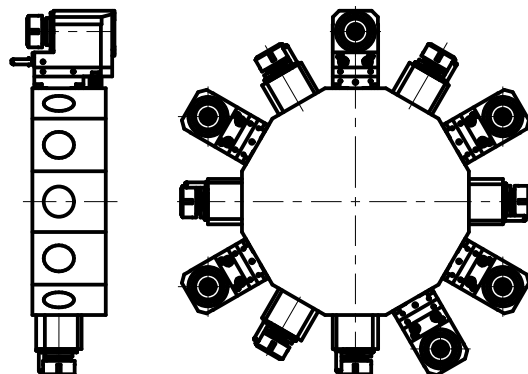


**TORRETTE ASSIALI
AXIAL TURRETS
AXIAL REVOLVER**

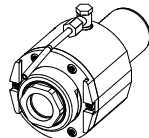
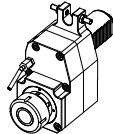
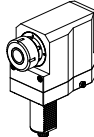
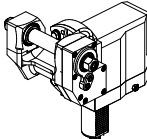


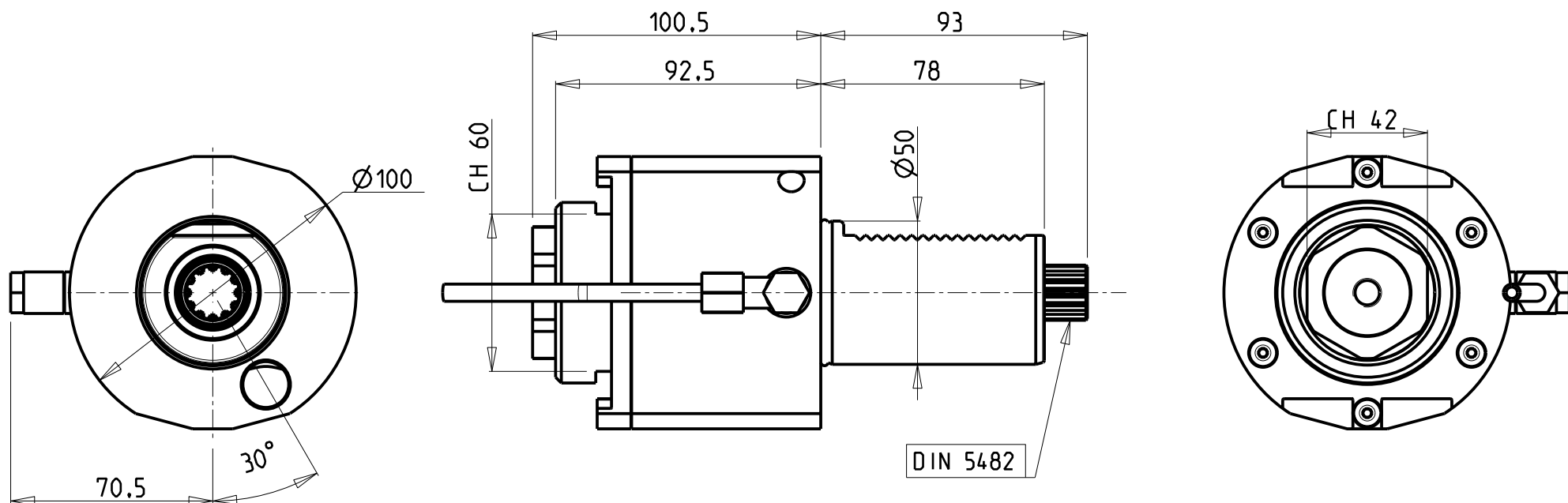
**TORRETTE RADIALI
RADIAL TURRETS
RADIAL REVOLVER**



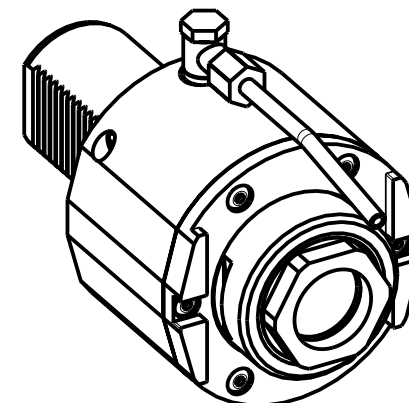
MACCHINE MACHINES MASCHINEN	MODELLI MODELS MODELLE
CONTUR	HSL 630/700
DOOSAN	V 420 M
FAT HACO	FCT 700
GEMINIS	CNC 5-870/1000/1600
GILDEMEISTER	CTX 600/700
GRAZIANO	GR 500 - GT 700
HEID	S 500
HEYLIGENSTAEDT	Heynumat 15
MAGDEBURGER	M 400/500
MAX MULLER	MD 7 iT
NILES	N 20/30
RAMO	RVS
STOREBRO	STB 4000
VICTOR	VT 36
WFL	M 50 - WNC 500

Distributeur/ importateur : Crylax 0033 450 960920 - info@crylax.com

		PAGINA Page Seite
MODULO MOTORIZZATO ASSIALE VDI50 DIN 5482 Axial driven tool VDI50 DIN 5482 Axial angetriebenes Werkzeug VDI50 DIN 5482		SAU014.4.00
MODULO MOTORIZZATO ASSIALE DISASSATO 60mm VDI50 DIN 5482 Axial driven tool re-directed by 60mm VDI50 DIN 5482 Axial angetriebenes Werkzeug achsversetzt um 60mm VDI50 DIN 5482		SAU014.4.05
MODULO MOTORIZZATO RADIALE ARRETRATO VDI50 DIN 5482 Radial rear-set driven tool VDI50 DIN 5482 Radial angetriebenes Werkzeug zurueckversetzt VDI50 DIN 5482		SAU015.4.00
MODULO MOTORIZZATO PORTACREATORE VDI50 DIN 5482 Driven gear hobber VDI50 DIN 5482 Angetriebenes Zahnradwaelzfraes-Werkzeug VDI50 DIN 5482		SAU340.4.10



- Chiave inclusa
- Key included
- Schluessel inbegriffen



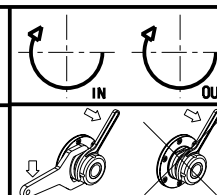
Cod. MT	Mandrino Spindle Spindel	I	RPM	Coppia Max Max Torque Max Drehmoment	Lubrificazione int. Coolant through Innenkuehlung	Lubrificazione est. Exl. coolant Aussenkuehlung	CHIAVI NON INCLUSE Keys not included Schluessel nicht einbegriffen	
SAU0880140	ERA40	1:1	4000	100Nm	-	X	CHUB42	OKU0430007 *
SAU0880240	ERA40	1:1	4000	100Nm	P=30bar	X	CHUB42	OKU0430007 *

SAUTER
VDI 50

Distributeur/ importateur : Crylax 0033 450 960920 - info@crylax.com

MODULO MOTORIZZATO ASSIALE VDI50 DIN 5482
Axial driven tool VDI50 DIN 5482
Axial angetriebenes Werkzeug VDI50 DIN 5482

Subject to change without notice.



M.T. srl

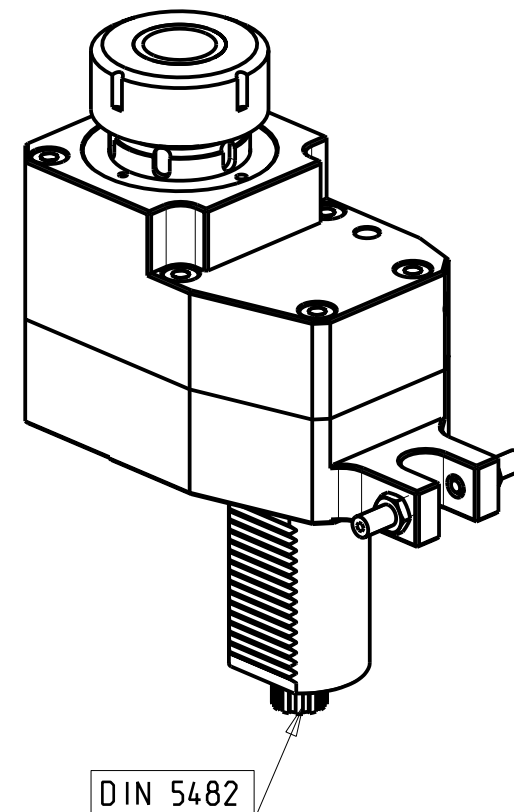
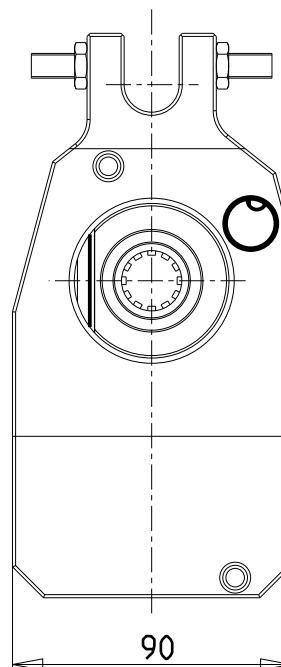
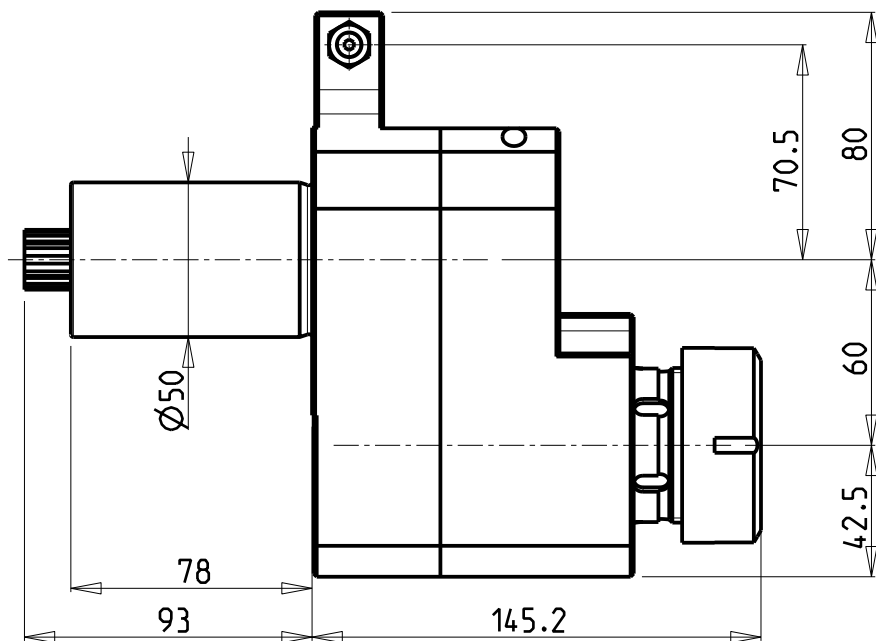
Via Casino Albini 480
Tel. 0541/956034-957884
Fax 0541/956341
47842 S. GIOVANNI IN M. (RN)
e-mail: mtma@mtmarchetti.com
<http://www.mtmarchetti.com>

PRODUZIONE MODULI ROTANTI



PAGINA SAU014-4-00

09/2019



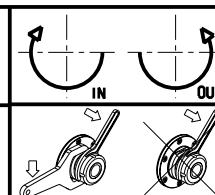
Cod. MT	Mandrino Spindle Spindel	I	RPM	Coppia Max Max Torque Max Drehmoment	Lubrificazione est. Ext. coolant Aussenkuehlung	CHIAVI NON INCLUSE Keys not included Schlüssel nicht einbegriffen	
versione dx right version version rechts							
245SAU_A40_50D00	ER40	1:1	4000	100Nm	X	CHSE5255	CHSTER40

SAUTER
VDI 50

Distributeur/ importateur : Crylax 0033 450 960920 - info@crylax.com

MODULO MOTORIZZATO ASSIALE DISASSATO 60mm VDI50 DIN 5482
Axial driven tool re-directed by 60mm VDI50 DIN 5482
Axial angetriebenes Werkzeug achsversetzt um 60mm VDI50 DIN 5482

Subject to change without notice.



M.T. srl

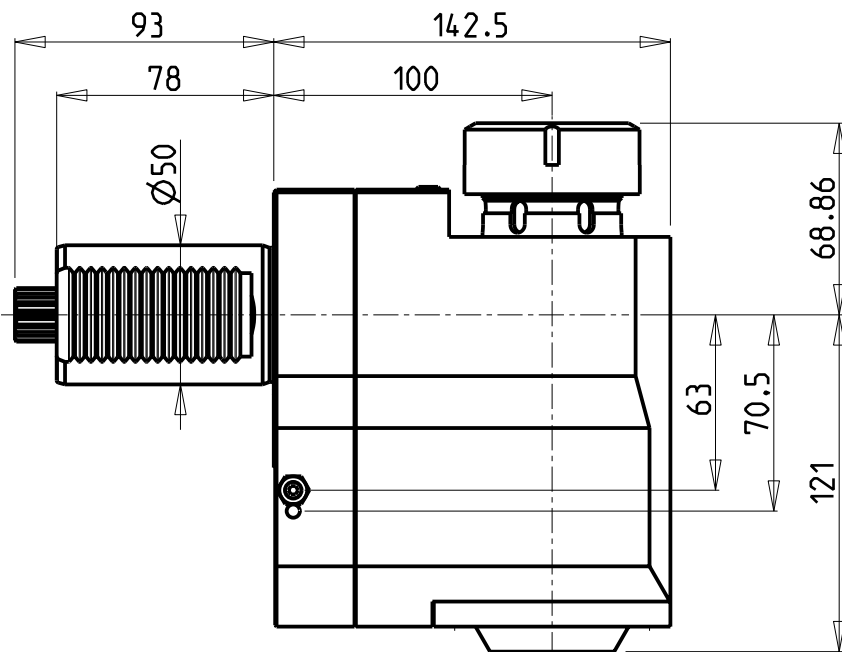
Via Casino Albini 480
Tel. 0541/956034-957884
Fax 0541/956341
47842 S. GIOVANNI IN M. (RN)
e-mail: mtma@mtmarchetti.com
<http://www.mtmarchetti.com>

PRODUZIONE MODULI ROTANTI

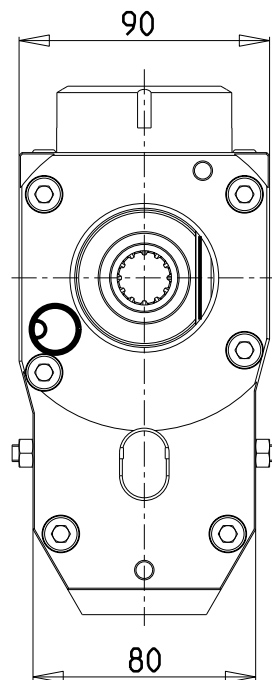


PAGINA SAU014-4-05

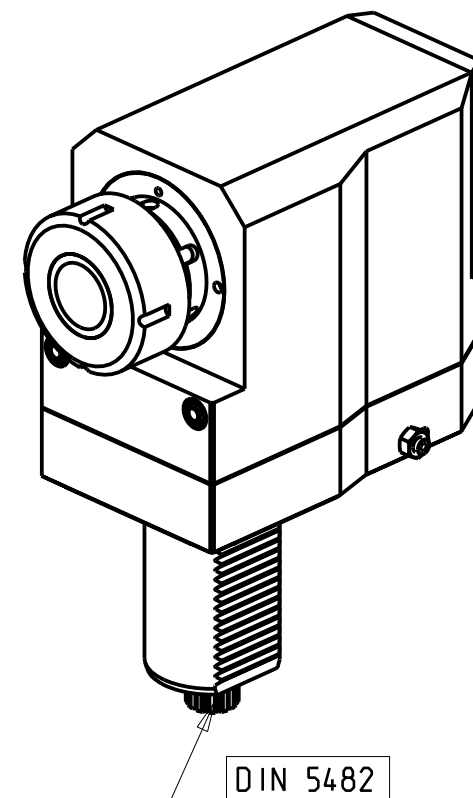
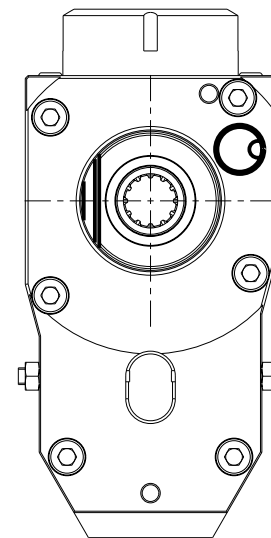
09/2019



versione dx
right version
version rechts



versione sx
left version
version links



DIN 5482

Cod. MT

versione dx
right version
version rechts

versione sx
left version
version links

Mandrino
Spindle
Spindel

I

RPM

Coppia Max
Max Torque
Max Drehmoment

Lubrificazione est.
Ext. coolant
Aussenkuehlung

CHIAVI NON INCLUSE
Keys not included
Schluessel nicht einbegriffen

241SAU_R40_50D00

241SAU_R40_50D20

ER40

1:1

4000

100Nm

X

CHSE5255

CHSTER40

SAUTER
VDI 50

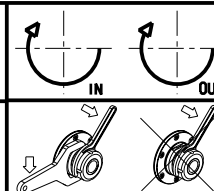
Distributeur/ importateur : Crylax 0033 450 960920 - info@crylax.com

MODULO MOTORIZZATO RADIALE ARRETRATO VDI50 DIN 5482

Radial rear-set driven tool VDI50 DIN 5482

Radial angetriebenes Werkzeug zurueckversetzt VDI50 DIN 5482

Subject to change without notice.



M.T. srl

Via Casino Albini 480
Tel. 0541/956034-957884
Fax 0541/956341

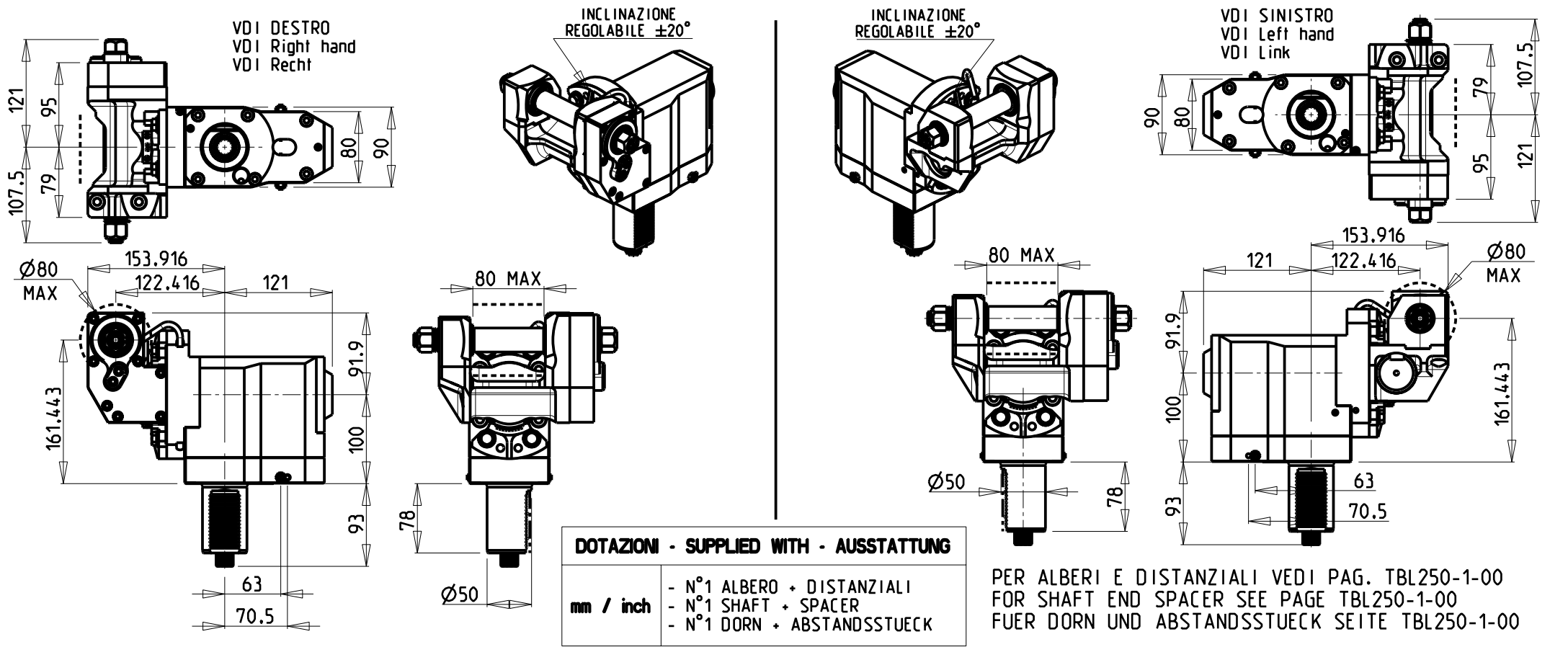
47842 S. GIOVANNI IN M. (RN)
e-mail: mtma@mtmarchetti.com
<http://www.mtmarchetti.com>

PRODUZIONE MODULI ROTANTI

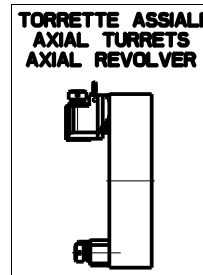


PAGINA SAU015-4-00

09/2019



Cod. MT	I	RPM max	Coppia Max Max Torque	Lubrificazione est. Ext. coolant Aussenkuehlung	D (mm)	D (Inch)	CHIAVI INCLUSE Keys included Schluessel inbegriffen			VDI
SAU0371100	1:1	4000	60Nm	X	16-22-27-32	3/4"-1"-1 1/4"	CHUB24	CHUB13	CHESL08	DESTRO - Right - Recht
SAU0372100	2:1	2000	80Nm	X	16-22-27-32	3/4"-1"-1 1/4"	CHUB24	CHUB13	CHESL08	DESTRO - Right - Recht
SAU0371110	1:1	4000	60Nm	X	16-22-27-32	3/4"-1"-1 1/4"	CHUB24	CHUB13	CHESL08	SINISTRO - Left - Link
SAU0372110	2:1	2000	80Nm	X	16-22-27-32	3/4"-1"-1 1/4"	CHUB24	CHUB13	CHESL08	SINISTRO - Left - Link

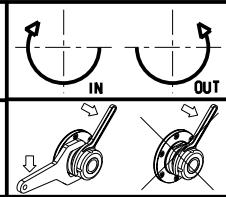


SAUTER
VDI 50

Distributeur/ importateur : Crylax 0033 450 960920 - info@crylax.com

MODULO MOTORIZZATO PORTACREATORE VDI50 DIN 5482
Driven gear hobber VDI50 DIN 5482
Angetriebenes Zahnradwaelzfraes-Werkzeug VDI50 DIN 5482

Subject to change without notice.



M.T. srl
Via Casino Albini 480
Tel. 0541/956034-957884
Fax 0541/956341
47842 S. GIOVANNI IN M. (RN)
e-mail: mtma@mtmarchetti.com
<http://www.mtmarchetti.com>

PRODUZIONE MODULI ROTANTI

MT

PAGINA SAU340-4-10