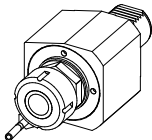

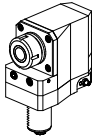
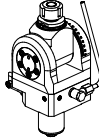
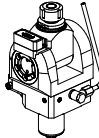
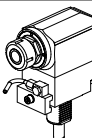
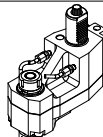
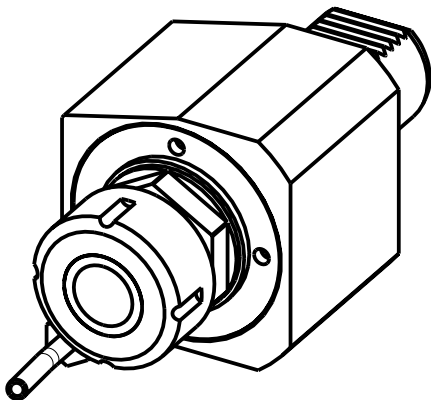
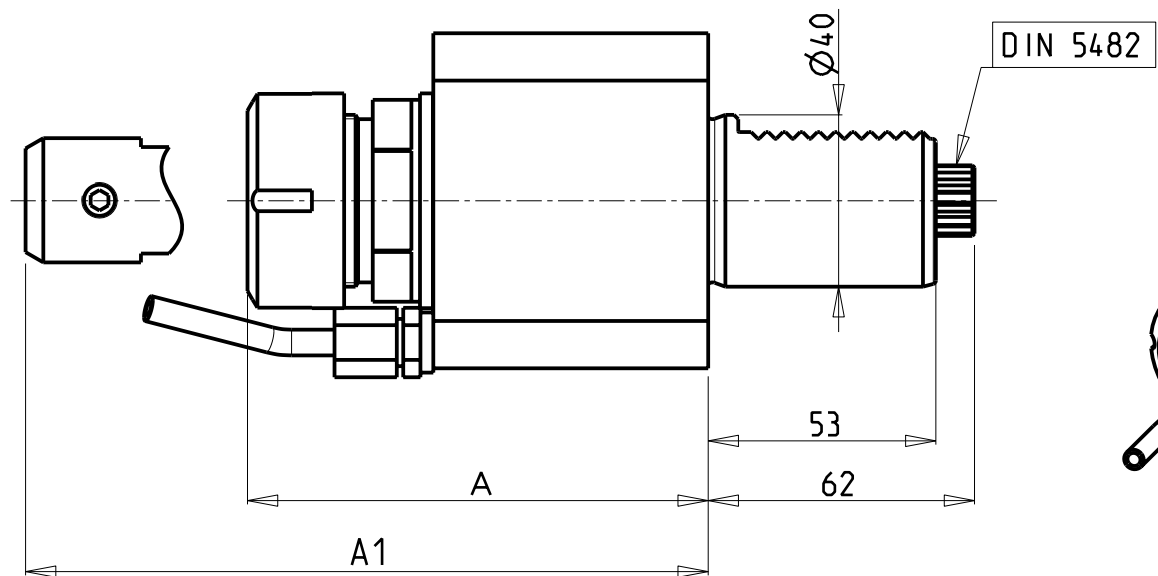
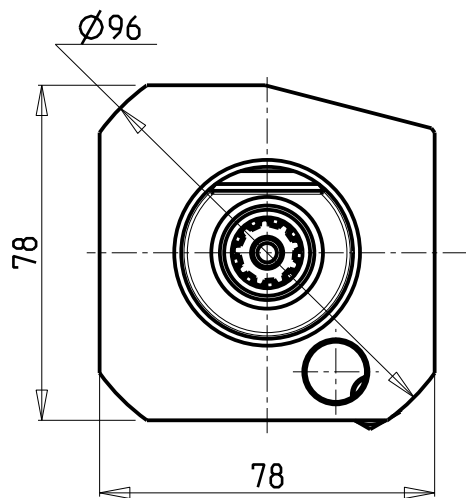


		PAGINA Page Seite
MODULO MOTORIZZATO ASSIALE VD140 DIN 5482 Axial driven tool VD140 DIN 5482 Axial angetriebenes Werkzeug VD140 DIN 5482		KIA014.1.00
MODULO MOTORIZZ. ASSIALE MOLTIPLICATO 1:2 DISASSATO 42mm VD140 Axial geared-up 1=1:2 driven tool re-directed by 42mm VD140 Axial angetriebenes Werkzeug uebersetzt 1=1:2 achsversetzt um 42mm VD140		KIA014.1.60
MODULO MOTORIZZATO RADIALE ARRETRATO VD140 DIN 5482 Radial rear-set driven tool VD140 DIN 5482 Radial angetriebenes Werkzeug zurueckversetzt VD140 DIN 5482		KIA015.1.60
MODULO MOTORIZZATO ORIENTABILE ±90° VD140 DIN 5482 ±90° adjustable angle driven tool VD140 DIN 5482 Angetriebenes Werkzeug schwenkbar ±90° VD140 DIN 5482		KIA016.1.60
MOD. MOTOR. ORIENTABILE ±90° CON NONIO DIGITALE VD140 DIN 5482 ±90° adjustable angle driven tool with digital display VD140 DIN 5482 Angetriebenes Werkzeug schwenkbar ±90° mit digital display VD140 DIN 5482		KIA016.1.61
MODULO MOTORIZZATO ASSIALE VD140 Axial driven tool VD140 Axial angetriebenes Werkzeug VD140		KIA150.1.10
MODULO MOTORIZZATO ASSIALE BISPORGENTE ARRETRATO VD140 DIN5482 Axial rear-set opposite face twin driven tool VD140 DIN5482 Axial angetriebenes Werkzeug halb vorspringend zurueckversetzt VD140 DIN5482		KIA243.1.10

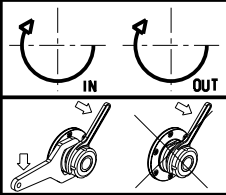
Distributeur/ importateur : Crylax 0033 450 960920 - info@crylax.com



Cod. MT	Mandrino Spindle Spindel	I	RPM	Coppia Max Max Torque Max Drehmoment	Lubrificazione int. Coolant through Innenkuehlung	Lubrificazione est. Ext. coolant Aussenkuehlung	A	A1	CHIAVI NON INCLUSE Keys not included Schluessel nicht einbegriffen	
202SAU_A32_40D00	ER32	1:1	4000	70Nm	-	X	107.26	-	CHUB41	CHSTER32
202SAU_A32_40D10	ER32	1:1	4000	70Nm	P=30bar	X	110.46	-	CHUB41	CHSTER32
SAU0460420	WELDON 20	1:1	4000	70Nm	-	X	-	97.3	-	-


HYUNDAI-W I A (KIA)
MOD: SKT15LM/LMS - L150LMSA - SKT21LM/LMS - L210LMSA

MODULO MOTORIZZATO ASSIALE VDI40 DIN 5482
Axial driven tool VDI40 DIN 5482
Axial angetriebenes Werkzeug VDI40 DIN 5482

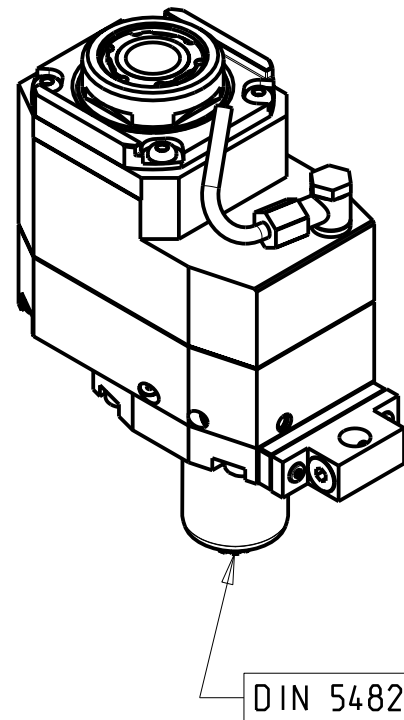
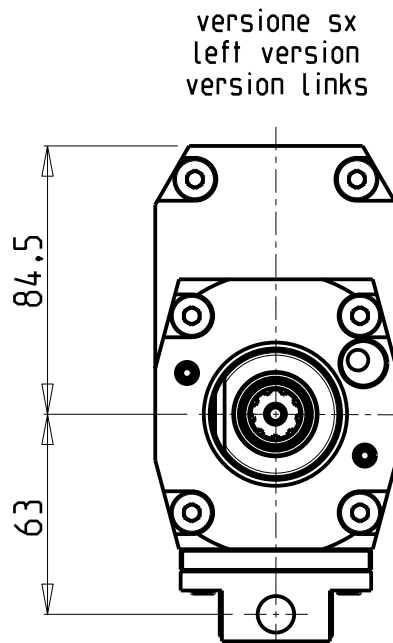
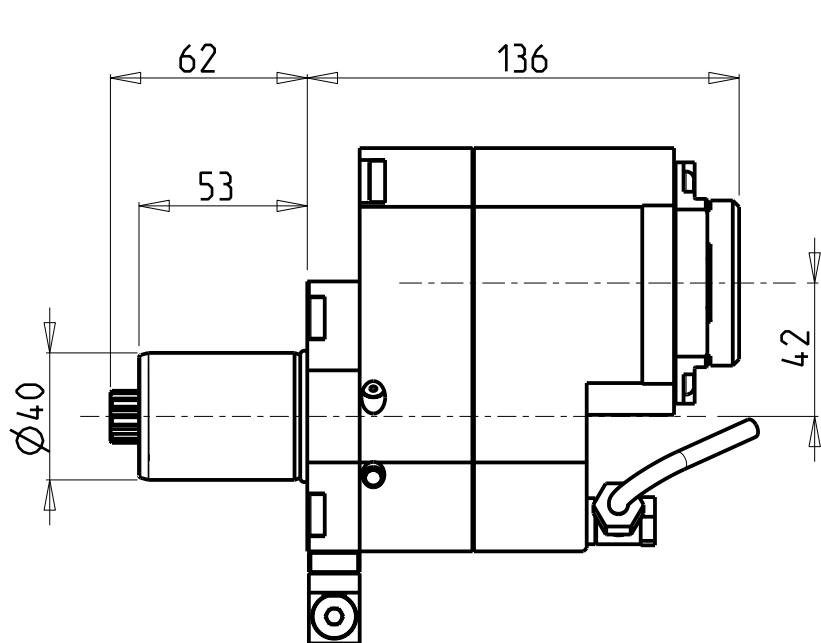


M.T. srl
Via Casino Albini 480
Tel. 0541/956034-957884
Fax 0541/956341
47842 S. GIOVANNI IN M. (RN)
e-mail: mtma@mtmarchetti.com
<http://www.mtmarchetti.com>

PRODUZIONE MODULI ROTANTI



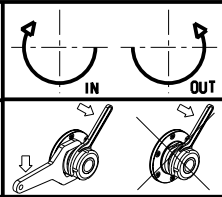
PAGINA KIA014-1-00



Cod. MT	Mandrino Spindle Spindel	I	RPM	Coppia Max Max Torque Max Drehmoment	Lubrificazione int. Coolant Through Innenkuehlung	Lubrificazione est. Ext. coolant Aussenkuehlung	CHIAVI NON INCLUSE Keys not included Schlüssel nicht einbegriffen		
SAU0447132	ERA32	1:2	8000	45Nm	-	X	CHUB30	CHTAER32ZC *	OKU0650004 *
SAU0447232	ERA32	1:2	8000	45Nm	P=70bar	X	CHUB30	CHTAER32ZC *	OKU0650004 *

- Chiave inclusa
- Key included
- Schlüssel inbegriffen

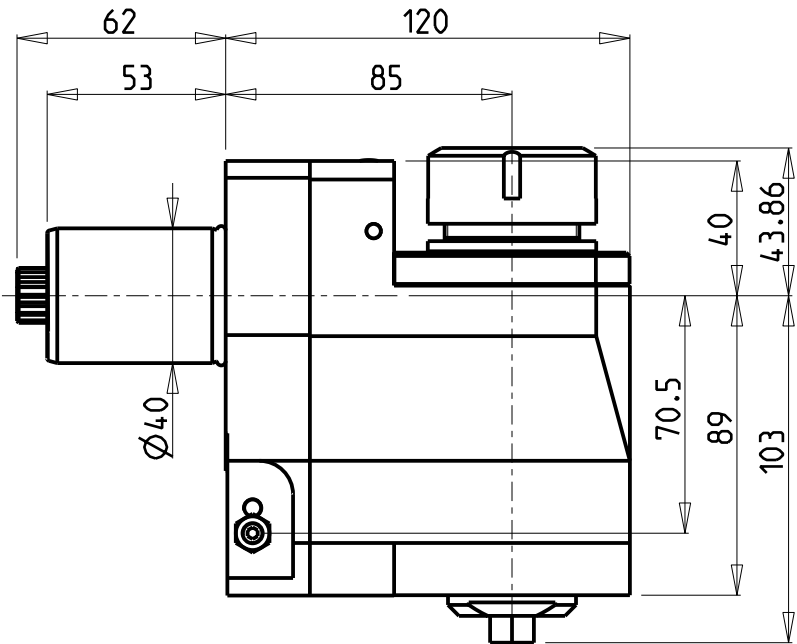
HYUNDAI-W I A (KIA)
MOD: SKT15LM/LMS - L150LMSA - SKT21LM/LMS - L210LMSA
MODULO MOTORIZZATO ASSIALE MOLTIPLICATO I=1:2 DISASSATO 42mm VD140
Axial geared-up I=1:2 driven tool re-directed by 42mm VD140
Axial angetriebenes Werkzeug uebersetzt I=1:2 achsversetzt um 42mm VD140



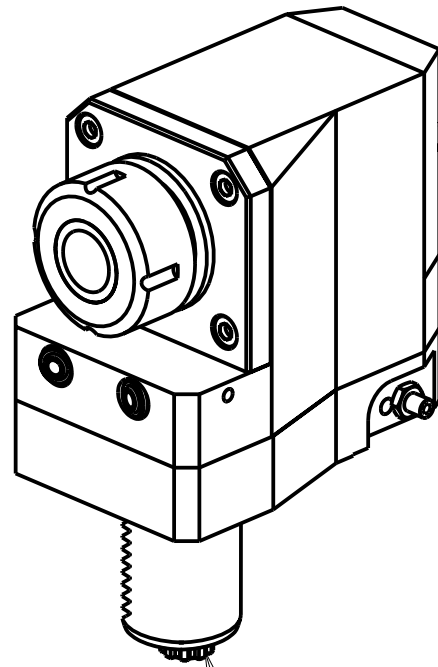
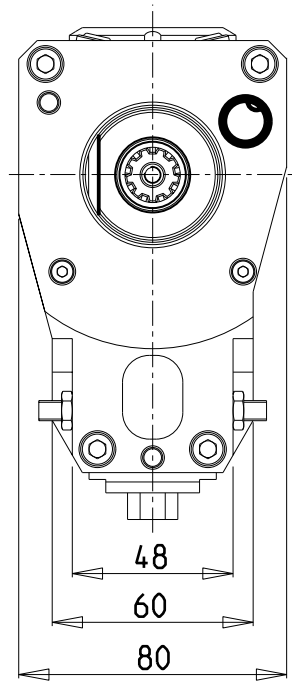
M.T. srl
Via Casino Albini 480
Tel. 0541/956034-957884
Fax 0541/956341
47842 S. GIOVANNI IN M. (RN)
e-mail: mtma@mtmarchetti.com
<http://www.mtmarchetti.com>

PRODUZIONE MODULI ROTANTI

PAGINA KIA014-1-60



versione sx
left version
version links

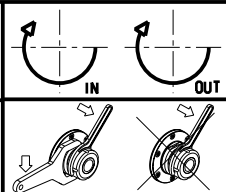


DIN 5482

Cod. MT	Mandrino Spindle Spindel	I	RPM	Coppia Max Max Torque Max Drehmoment	Lubrificazione est. Ext. coolant Aussenkuehlung	CHIAVI NON INCLUSE Keys not included Schluessel nicht einbegriffen	
201SAU_R32_40D20	ER32	1:1	4000	70Nm	X	CHUB13	CHSTER32

HYUNDAI-W I A (KIA)
MOD: SKT15LM/LMS - L150LMSA - SKT21LM/LMS - L210LMSA

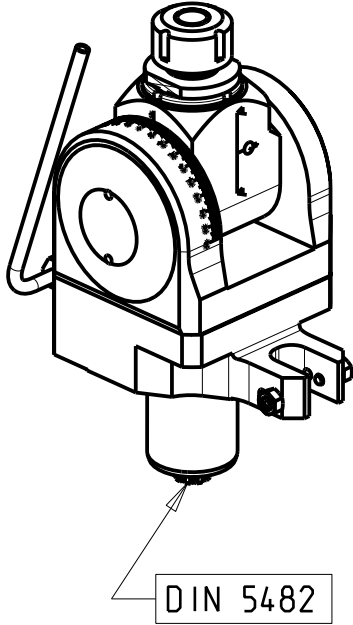
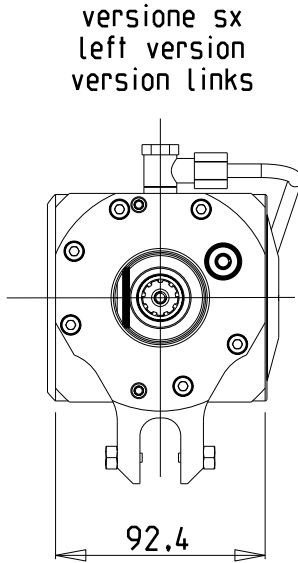
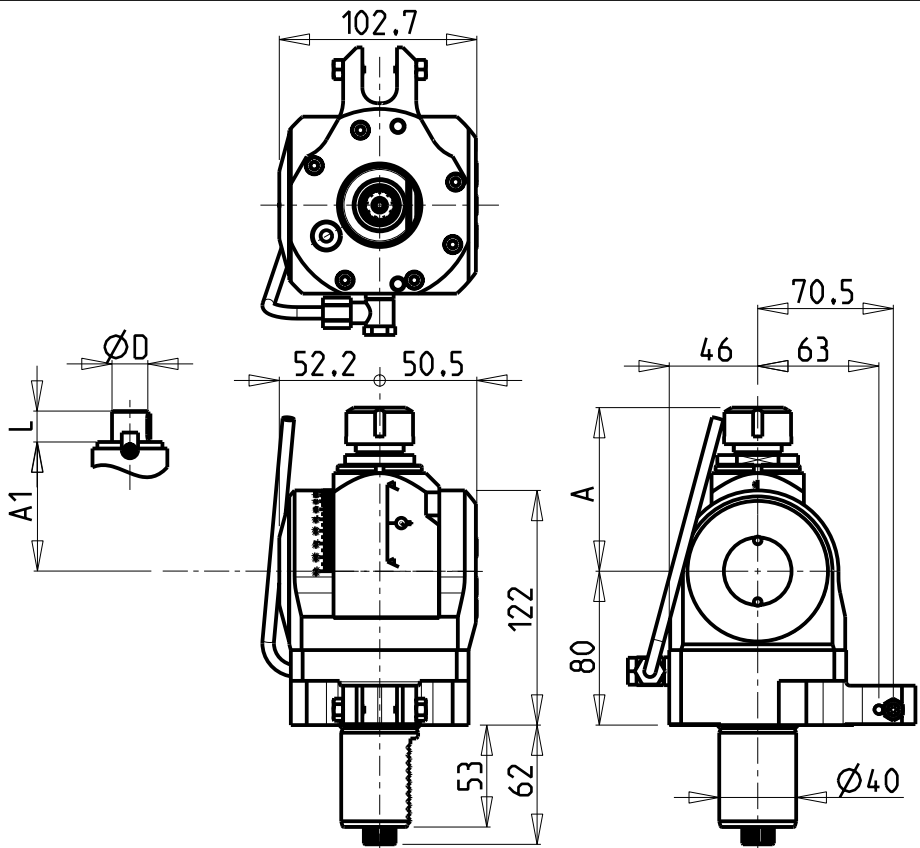
MODULO MOTORIZZATO RADIALE ARRETRATO VDI40 DIN 5482
Radial rear-set driven tool VDI40 DIN 5482
Radial angetriebenes Werkzeug zurueckversetzt VDI40 DIN 5482



M.T. srl
Via Casino Albini 480
Tel. 0541/956034-957884
Fax 0541/956341
47842 S. GIOVANNI IN M. (RN)
e-mail: mtma@mtmarchetti.com
<http://www.mtmarchetti.com>

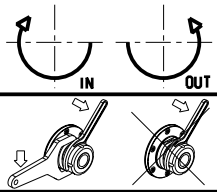
PRODUZIONE MODULI ROTANTI

PAGINA KIA015-1-60



Cod. MT	Mandrino Spindle Spindel	I	RPM	Coppia Max Max Torque Max Drehmoment	Lubrificazione est. Ext. coolant Aussenkuehlung	A	A1	D	L	CHIAVI INCLUSE Keys included Schluesssel einbegriffen	
SAU0851120	ER20	1:1	4000	40Nm	X	85.16	-	-	-	CHUB36	CHSTER20
SAU0851125	ER25	1:1	4000	40Nm	X	86.16	-	-	-	CHUB36	CHSTER25
SAU0851516	Ø16x17	1:1	4000	40Nm	X	-	65	16	17	CHUB36	CH_VTCROCE_M08
SAU0851522	Ø22x19	1:1	4000	40Nm	X	-	66	22	19	CHUB36	CH_VTCROCE_M10
SAU0851519	Ø3/4"x3/4"	1:1	4000	40Nm	X	-	65	3/4"	3/4"	CHUB36	CH_VTCROCE_M08

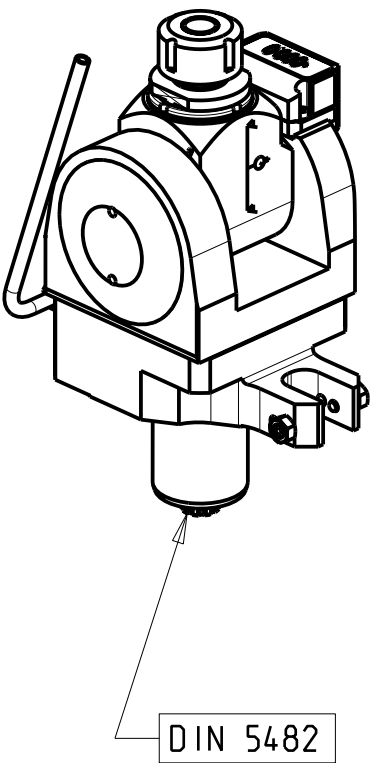
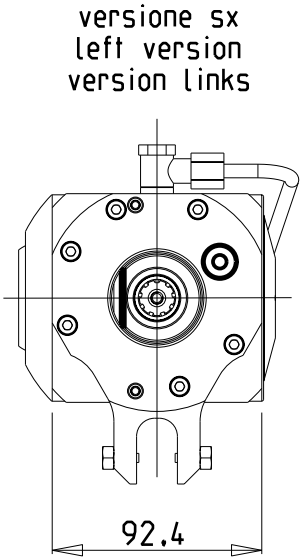
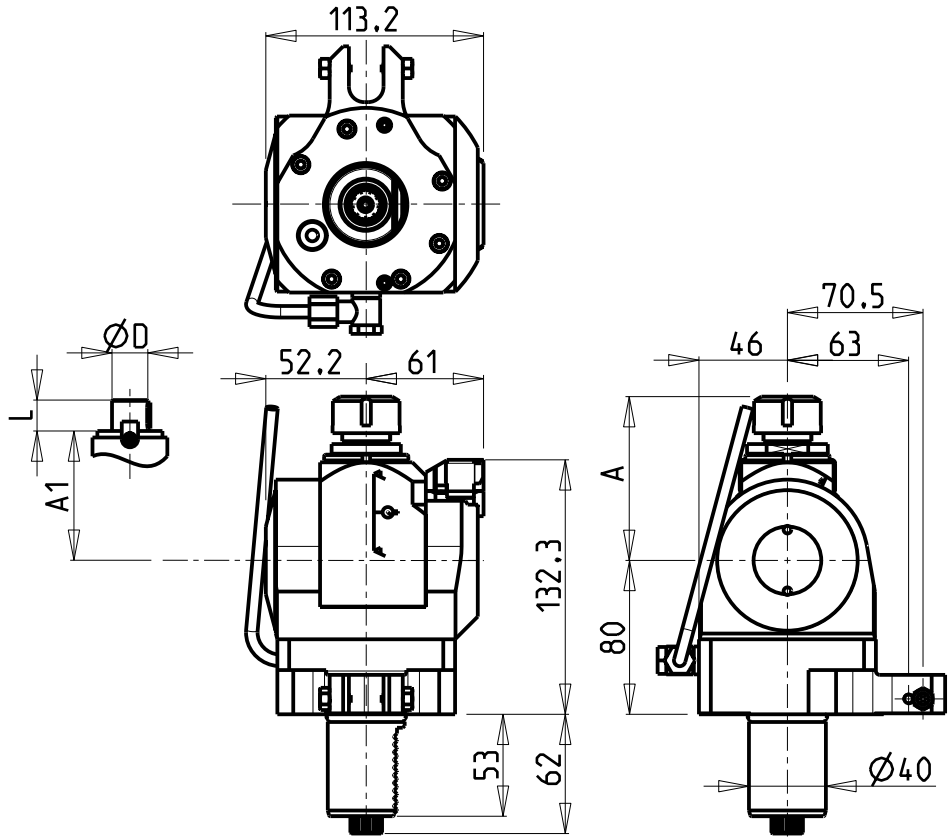
HYUNDAI-W I A (KIA)
MOD: SKT15LM/LMS - L150LMSA - SKT21LM/LMS - L210LMSA
MODULO MOTORIZZATO ORIENTABILE ±90° VDI40 DIN 5482
±90° adjustable angle driven tool VDI40 DIN 5482
Angetriebenes Werkzeug schwenkbar ±90° VDI40 DIN 5482



M.T. srl
Via Casino Albini 480
Tel. 0541/956034-957884
Fax 0541/956341
47842 S. GIOVANNI IN M. (RN)
e-mail: mtma@mtmarchetti.com
<http://www.mtmarchetti.com>

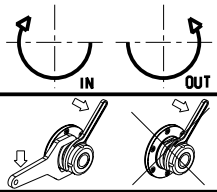
PRODUZIONE MODULI ROTANTI

PAGINA KIA016-1-60



Cod. MT	Mandrino Spindle Spindel	I	RPM	Coppia Max Max Torque Max Drehmoment	Lubrificazione est. Ext. coolant Aussenkuehlung	A	A1	D	L	CHIAVI INCLUSE Keys included Schluessel einbegriffen	
SAU0771120	ER20	1:1	4000	40Nm	X	85.16	-	-	-	CHUB36	CHSTER20
SAU0771125	ER25	1:1	4000	40Nm	X	86.16	-	-	-	CHUB36	CHSTER25
SAU0771516	Ø16x17	1:1	4000	40Nm	X	-	65	16	17	CHUB36	CH_VTCROCE_M08
SAU0771522	Ø22x19	1:1	4000	40Nm	X	-	66	22	19	CHUB36	CH_VTCROCE_M10
SAU0771519	Ø3/4"x3/4"	1:1	4000	40Nm	X	-	65	3/4"	3/4"	CHUB36	CH_VTCROCE_M08

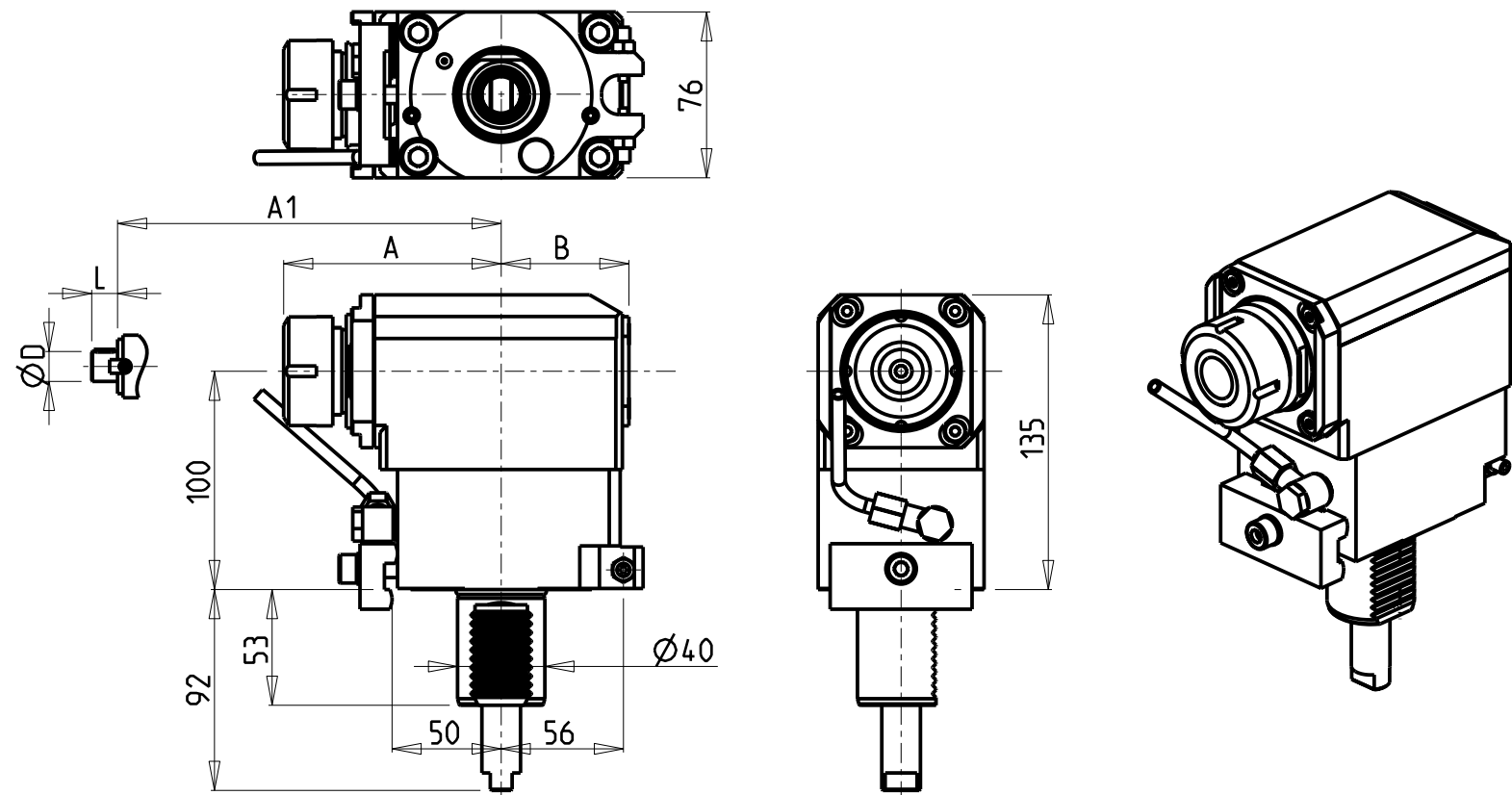
HYUNDAI-W I A (KIA)
MOD: SKT15LM/LMS - L150LMSA - SKT21LM/LMS - L210LMSA
MODULO MOTORIZZATO ORIENTABILE ±90° CON NONIO DIGITALE VD140 DIN 5482
±90° adjustable angle driven tool with digital display VD140 DIN 5482
Angetriebenes Werkzeug schwenkbar ±90° mit digital display VD140 DIN 5482



M.T. srl
Via Casino Albini 480
Tel. 0541/956034-957884
Fax 0541/956341
47842 S. GIOVANNI IN M. (RN)
e-mail: mtma@mtmarchetti.com
<http://www.mtmarchetti.com>

PRODUZIONE MODULI ROTANTI

PAGINA KIA016-1-61



ATTENZIONE - ATTENTION - ACHTUNG

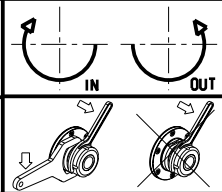
- Per lo smontaggio degli utensili utilizzare sempre la chiave di contrasto come indicato nel manuale d'uso.
- For disassembly of the tools use always the contrast key as mentioned in the user instructions.
- Fuer das Abmontieren der Werkzeuge immer den Gegenschlüssel benutzen wie in der Bedienungsanleitung erwaeht.

- Chiave inclusa
- Key included
- Schluessel inbegriffen

Cod. MT	Mandrino Spindle Spindel	I	RPM	Coppia Max Max Torque Max Drehmoment	Lubrificazione int. Coolant through Innenkuhlung	Lubrificazione est. Ext. coolant Aussenkuhlung	A	A1	B	D	L	CHIAVI NON INCLUDE Keys not included Schluessel nicht einbegriffen	
KIA0010132	ER32	1:1	4000	70Nm	-	X	99.7	-	58.5	-	-	OKU0650004	CHSTER32
KIA0010232	ER32	1:1	4000	70Nm	P=70bar	X	99.7	-	69.5	-	-	OKU0650004	CHSTER32
KIA0010140	ER40	1:1	4000	70Nm	-	X	103.7	-	58.5	-	-	OKU0650004	CHSTER40
KIA0010240	ER40	1:1	4000	70Nm	P=70bar	X	103.7	-	69.5	-	-	OKU0650004	CHSTER40
253KIA_R22_40A00	Ø22x19	1:1	4000	70Nm	-	X	-	78.5	58.5	22	19	CHUB41	CH_VTCROCE_M10
253KIA_R27_40A00	Ø27x21	1:1	4000	70Nm	-	X	-	78.5	58.5	27	21	CHUB41	CH_VTCROCE_M12


HYUNDAI-WIA (KIA)
MOD: SKT28LM - L280LM

MODULO MOTORIZZATO ASSIALE VDI40
Axial driven tool VDI40
Axial angetriebenes Werkzeug VDI40

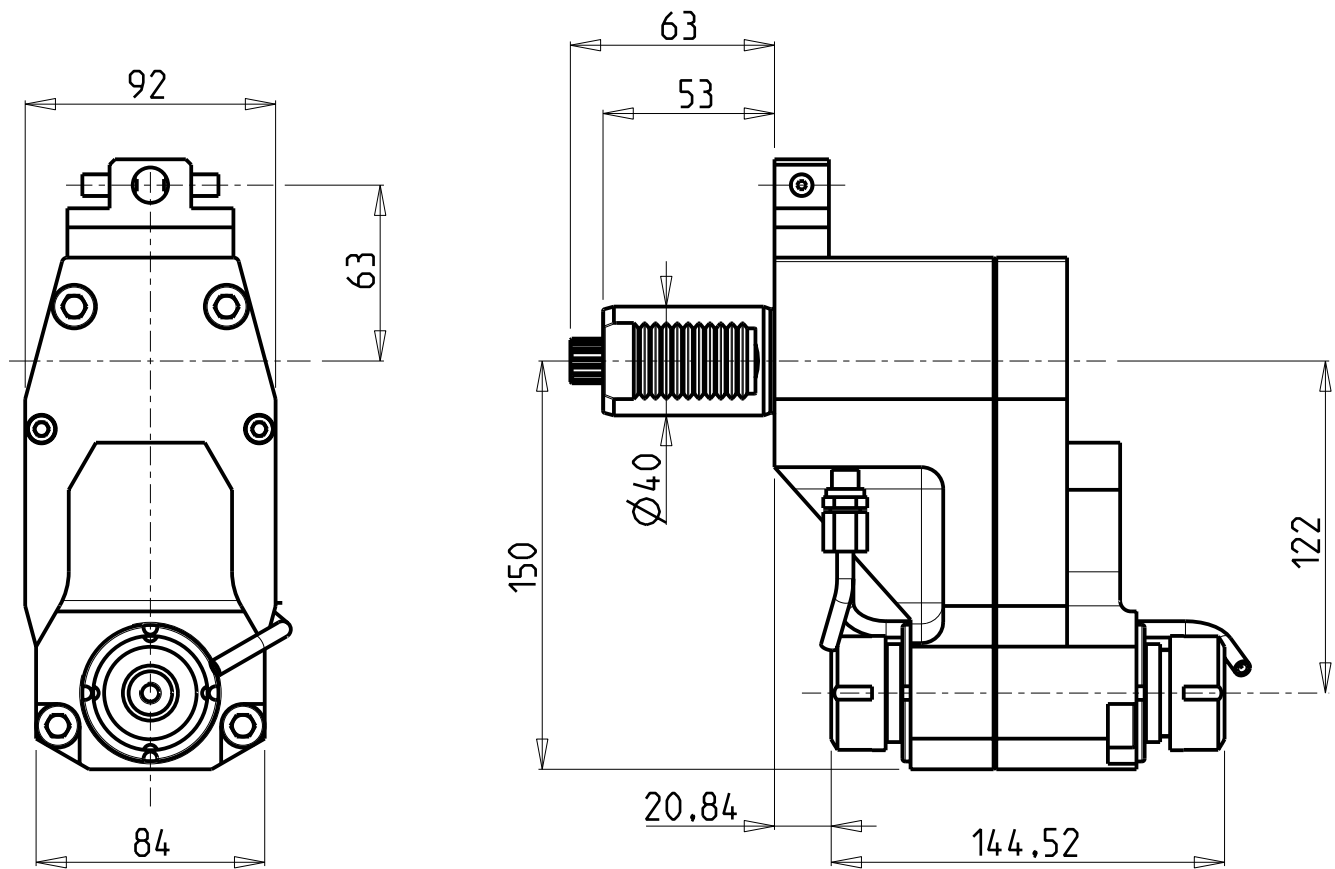


M.T. srl
Via Casino Albini 480
Tel. 0541/956034-957884
Fax 0541/956341
47842 S. GIOVANNI IN M. (RN)
e-mail: mtma@mtmarchetti.com
<http://www.mtmarchetti.com>

PRODUZIONE MODULI ROTANTI

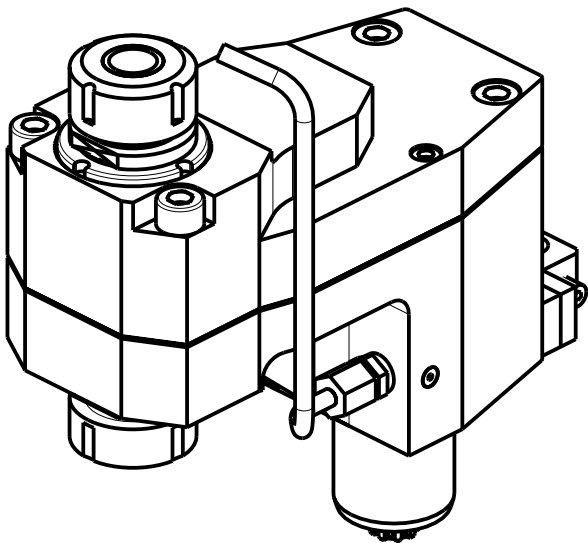


PAGINA KIA150-1-10



ATTENZIONE - ATTENTION - ACHTUNG

- Per lo smontaggio degli utensili utilizzare sempre la chiave di contrasto come indicato nel manuale d'uso.
- For disassembly of the tools use always the contrast key as mentioned in the user instructions.
- Fuer das Abmontieren der Werkzeuge immer den Gegenschlüssel benutzen wie in der Bedienungsanleitung erwaeht.



Cod. MT	Mandrino Spindle Spindel	I	RPM	Coppia Max Max Torque Max Drehmoment	Lubrificazione est. Ext. coolant Aussenkuehlung	CHIAVI NON INCLUSE Keys not included Schlüssel nicht einbegriffen	
254KIA_A25_40D00	ER25+ER25	1:1	4000	70Nm	X	CHUB36	CHSTER25

HYUNDAI-W I A (KIA)
MOD: SKT15LM/LMS - L150LMSA - SKT21LM/LMS - L210LMSA
MODULO MOTORIZZATO ASSIALE BISPORGENTE ARRETRATO VDI40 DIN5482
Axial rear-set opposite face twin driven tool VDI40 DIN5482
Axial angetriebenes Werkzeug halb vospringend zurueckversetzt VDI40 DIN5482

Subject to change without notice.

M.T. srl
Via Casino Albini 480
Tel. 0541/956034-957884
Fax 0541/956341
47842 S. GIOVANNI IN M. (RN)
e-mail: mtma@mtmarchetti.com
<http://www.mtmarchetti.com>

PRODUZIONE MODULI ROTANTI



PAGINA KIA243-1-10

Distributeur/ importateur : Crylax 0033 450 960920 - info@crylax.com