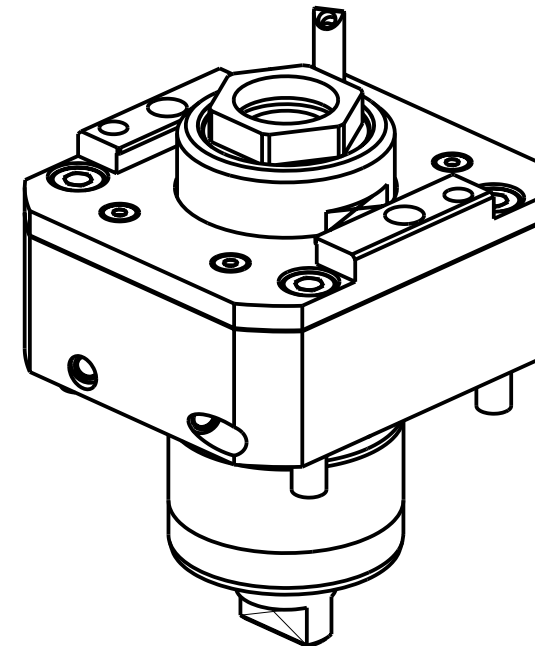
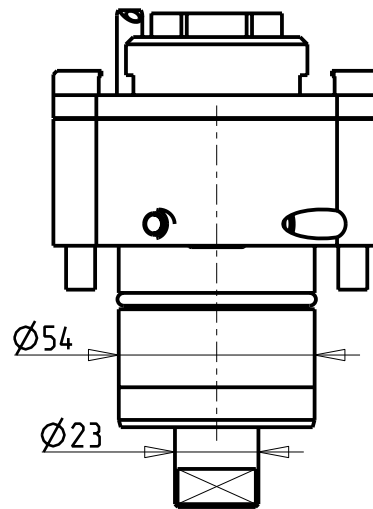
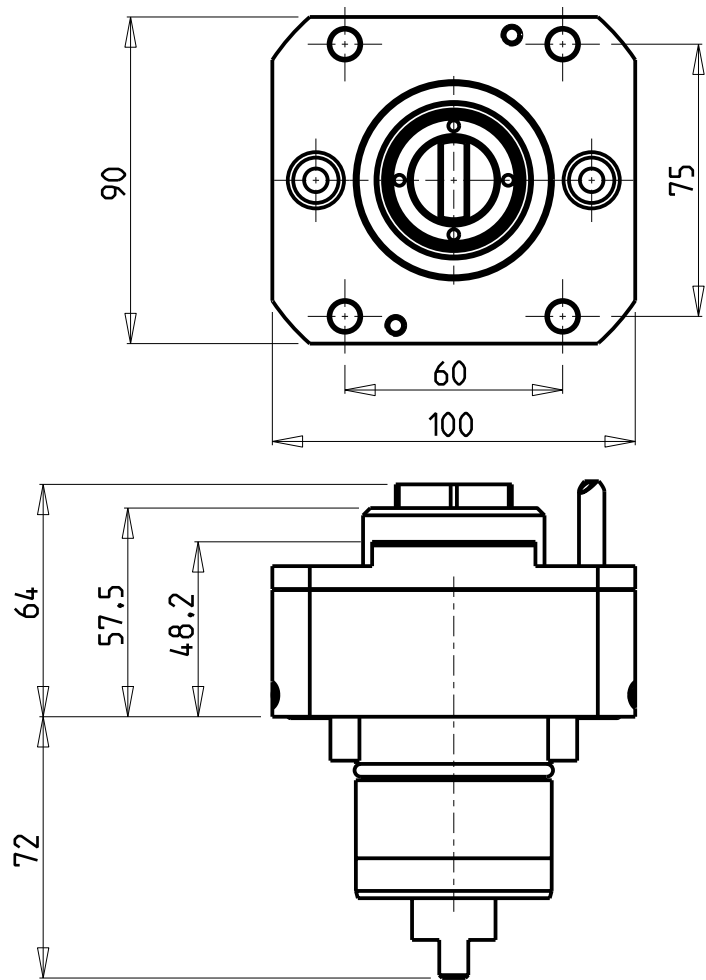


		PAGINA Page Seite
MODULO MOTORIZZATO RADIALE Radial driven tool Radial angetriebenes Werkzeug		MYA010.3.00
MODULO MOTORIZZATO ASSIALE H=75mm Axial driven tool H=75mm Axial angetriebenes Werkzeug H=75mm		MYA150.3.10
MODULO MOTORIZZATO ASSIALE MOLTIPLICATO I=1:2 H=75mm Axial geared-up I=1:2 driven tool H=75mm Axial angetriebenes Werkzeug uebersetzt I=1:2 H=75mm		MYA200.3.10
MODULO MOTORIZZATO ORIENTABILE ±90° ±90° adjustable angle driven tool Angetriebenes Werkzeug schwenkbar ±90°		MYA335.3.00
MODULO MOTORIZZATO ORIENTABILE ±90° CON NONIO DIGITALE ±90° adjustable angle driven tool with digital display Angetriebenes Werkzeug schwenkbar ±90° mit digital display		MYA335.3.01
MODULO MOTORIZZATO ORIENTABILE ±90° MOLTIPLICATO I=1:2 ±90° adjustable angle driven tool geared-up I=1:2 Angetriebenes Werkzeug schwenkbar ±90° uebersetzt I=1:2		MYA336.3.00
MOD. MOTORIZZ. ORIENTABILE ±90° MOLTIPL. I=1:2 CON NONIO DIGITALE ±90° adjustable angle driven tool geared-up I=1:2 with digital display Angetriebenes Werkzeug schwenkbar ±90° uebersetzt I=1:2 mit digital display		MYA336.3.01
MODULO MOTORIZZATO PORTACREATORE Driven gear hobber Angetriebenes Zahnradwaelzfraes-Werkzeug		MYA340.3.00
PORTAUTENSILE RADIALE SINGOLO QD=20mm Radial single static tool QD=20mm Radial Single-Werkzeughalter QD=20mm		MYA420.3.00
PORTAUTENSILE ASSIALE ARRETRATO PER BARENO Ø32mm H=85mm Axial single rear set boring bar holder Ø32mm H=85mm Axial Bohrhalter zurueckversetzt Ø32mm H=85mm		MYA847.3.10
PORTAUTENSILE RADIALE SINGOLO MT CAPTO Radial single static tool MT CAPTO Radial Single-Werkzeughalter MT CAPTO		MYA420.C.40
PORTAUTENSILE RADIALE SOVRAPPOSTO MT CAPTO Radial single side twin static tool MT CAPTO Radial Werkzeughalter ueberlagert MT CAPTO		MYA440.C.30

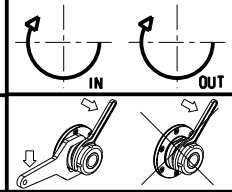
Distributeur/ importateur : Crylax 0033 450 960920 - info@crylax.com



- Chiave inclusa
- Key included
- Schlüssel inbegriffen

Cod. MT	Mandrino Spindle Spindel	I	RPM	Coppia Max Max Torque Max Drehmoment	Lubrificazione est. Ext. coolant Aussenkuehlung	CHIAVI NON INCLUSE Keys not included Schluessel nicht einbegriffen	
MYA0140332	ERA32	1:1	6000	50Nm	X	OKU0650004	CHUB32

MIYANO
MOD: ABX-51/64 SYY/THY
MODULO MOTORIZZATO RADIALE
Radial driven tool
Radial angetriebenes Werkzeug
Subject to change without notice.

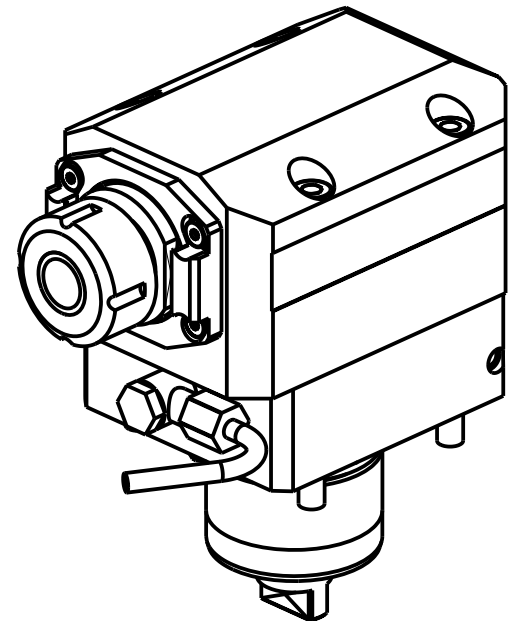
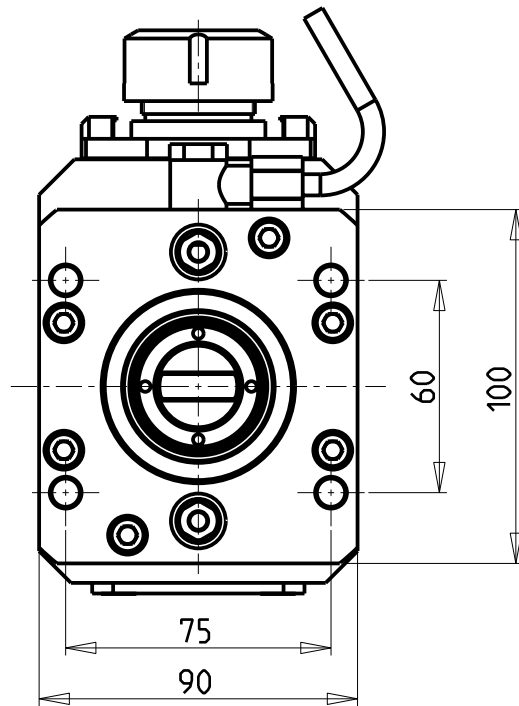
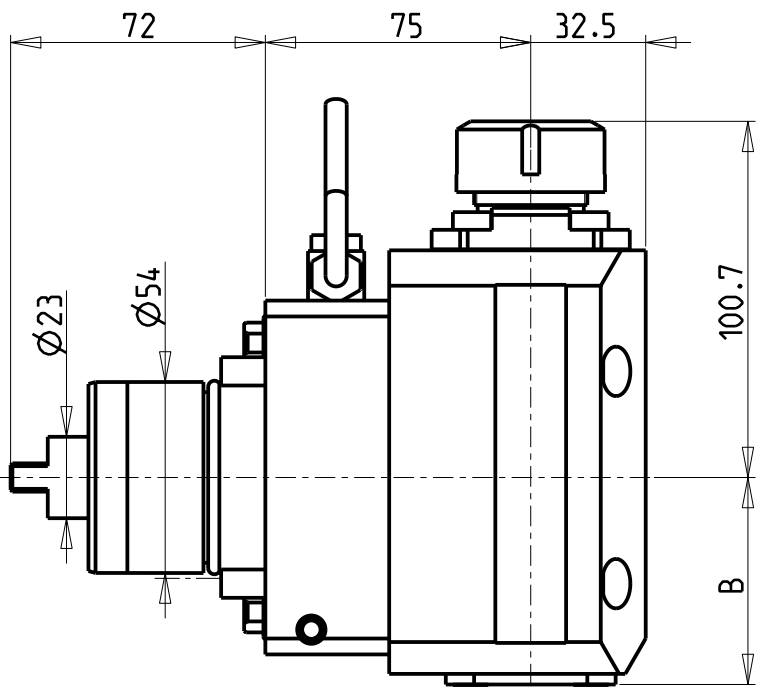


M.T. srl
Via Casino Albini 480
Tel. 0541/956034-957884
Fax 0541/956341
47842 S. GIOVANNI IN M. (RN)
e-mail: mtma@mtmarchetti.com
<http://www.mtmarchetti.com>

PRODUZIONE MODULI ROTANTI



PAGINA MYA010-3-00



Cod. MT	Mandrino Spindle Spindel	I	RPM	Coppia Max Max Torque Max Drehmoment	Reversibile lato mandrino/contromandrino Reversible sub/main spindle side Umkehrbare Spindel-seite/ Gegenspindel-seite	Lubrificazione int. Coolant through Innenkuehlung	Lubrificazione est. Ext. coolant Aussenkuehlung	B	CHIAVI NON INCLUSE Keys not included Schlüssel nicht einbegriffen	
MYA0160125	ER25	1:2	12000	30Nm	X	-	X	58.5	CHSTER25	OKU0290009 ▪
MYA0160225	ER25	1:2	12000	30Nm	X	P=70bar	X	68.5	CHSTER25	OKU0290009 ▪

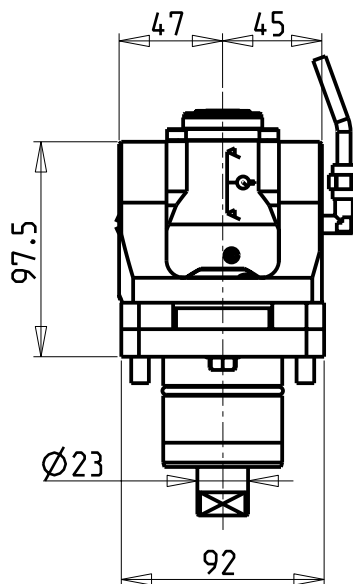
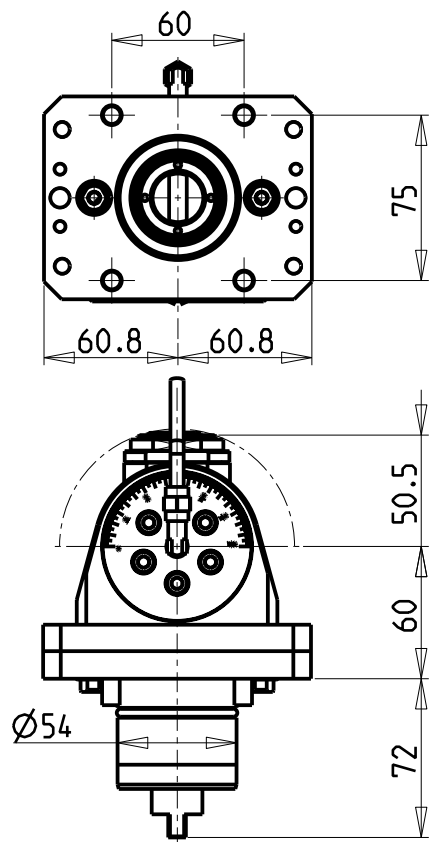
▪ Chiave inclusa
▪ Key included
▪ Schlüssel inbegriffen

MIYANO	
MOD: ABX-51/64 SYY/THY	
MODULO MOTORIZZATO ASSIALE MOLTIPLICATO I=1:2 H=75mm Axial gear-driven I=1:2 driven tool H=75mm Axial angetriebenes Werkzeug uebersetzt I=1:2 H=75mm	

M.T. srl
Via Casino Albini 480
Tel. 0541/956034-957884
Fax 0541/956341
47842 S. GIOVANNI IN M. (RN)
e-mail: mtma@mtmarchetti.com
<http://www.mtmarchetti.com>

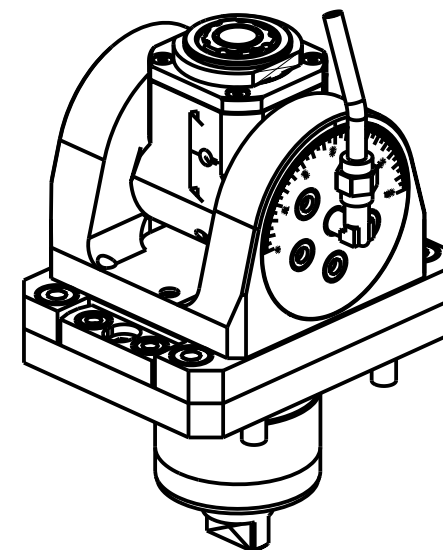
PRODUZIONE MODULI ROTANTI

PAGINA MYA200-3-10



ATTENZIONE - ATTENTION - ACHTUNG

- Per lo smontaggio degli utensili utilizzare sempre la chiave di contrasto come indicato nel manuale d'uso.
- For disassembly of the tools use always the contrast key as mentioned in the user instructions.
- Fuer das Abmontieren der Werkzeuge immer den Gegenschlüssel benutzen wie in der Bedienungsanleitung erwaeht.



Cod. MT	Mandrino Spindle Spindel	I	RPM	Coppia Max Max Torque Max Drehmoment	Reversibile lato mandrino/contromandrino Reversible sub/main spindle side Umkehrbare Spindel-seite/ Gegenspindel-seite	Lubrificazione int. Coolant through Innenkuehlung	Lubrificazione est. Ext. coolant Aussenkuehlung	CHIAVI INCLUSE Keys included Schlüssel inbegriffen			
MYA0120120	ERA20	1:1	6000	30Nm	X	-	X	CHUB36	CHUB22	CHESL06	CHTAER20ZC
MYA0120220	ERA20	1:1	6000	30Nm	X	P=70bar	X	CHUB36	CHUB22	CHESL06	CHTAER20ZC

MIYANO

MOD: ABX-51/64 SYY/THY

MODULO MOTORIZZATO ORIENTABILE +/-90° H=60mm

+/-90° adjustable angle driven tool H=60mm

Angetriebenes Werkzeug schwenkbar +/-90° H=60mm

M.T. srl

Via Casino Albini 480

Tel. 0541/956034-957884

Fax 0541/956341

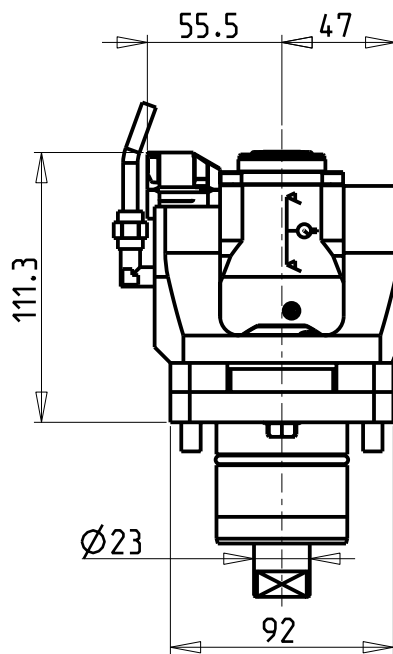
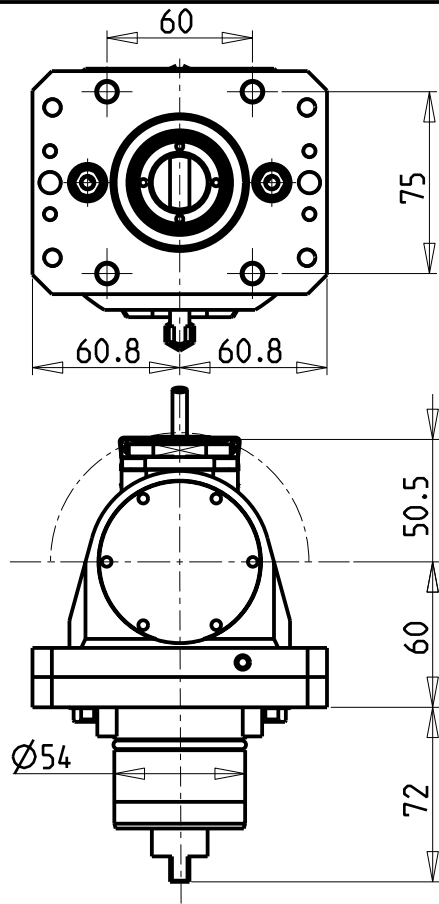
47842 S. GIOVANNI IN M. (RN)

e-mail: mtma@mtmarchetti.com

<http://www.mtmarchetti.com>

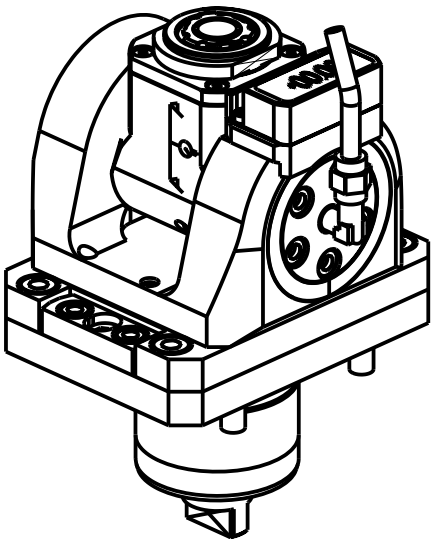
PRODUZIONE MODULI ROTANTI

PAGINA MYA335-3-00



ATTENZIONE - ATTENTION - ACHTUNG

- Per lo smontaggio degli utensili utilizzare sempre la chiave di contrasto come indicato nel manuale d'uso.
- For disassembly of the tools use always the contrast key as mentioned in the user instructions.
- Fuer das Abmontieren der Werkzeuge immer den Gegenschlüssel benutzen wie in der Bedienungsanleitung erwaeht.



Cod. MT	Mandrino Spindle Spindel	I	RPM	Coppia Max Max Torque Max Drehmoment	Reversibile lato mandrino/contromandrino Reversible sub/main spindle side Umkehrbare Spindel-seite/ Gegenspindel-seite	Lubrificazione int. Coolant through Innenkuehlung	Lubrificazione est. Ext. coolant Aussenkuehlung	CHIAVI INCLUSE Keys included Schlüssel inbegriffen			
MYA0125120	ERA20	1:1	6000	30Nm	X	-	X	CHUB36	CHUB22	CHESL06	CHTAER20ZC
MYA0125220	ERA20	1:1	6000	30Nm	X	P=70bar	X	CHUB36	CHUB22	CHESL06	CHTAER20ZC

MIYANO

MOD: ABX-51/64 SYY/THY

MODULO MOTORIZZATO ORIENTABILE +/-90° CON NONIO DIGITALE H=60mm

+/-90° adjustable angle driven tool with digital display H=60mm

Angetriebenes Werkzeug schwenkbar +/-90° mit digital display H=60mm

M.T. srl

Via Casino Albini 480

Tel. 0541/956034-957884

Fax 0541/956341

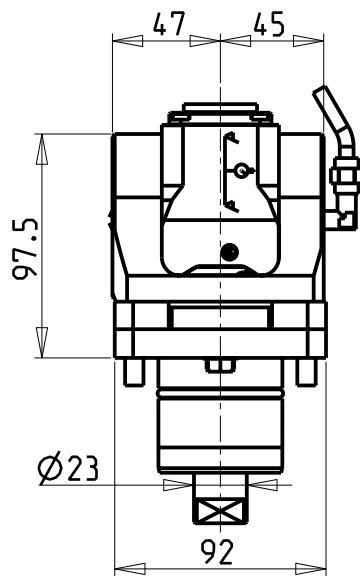
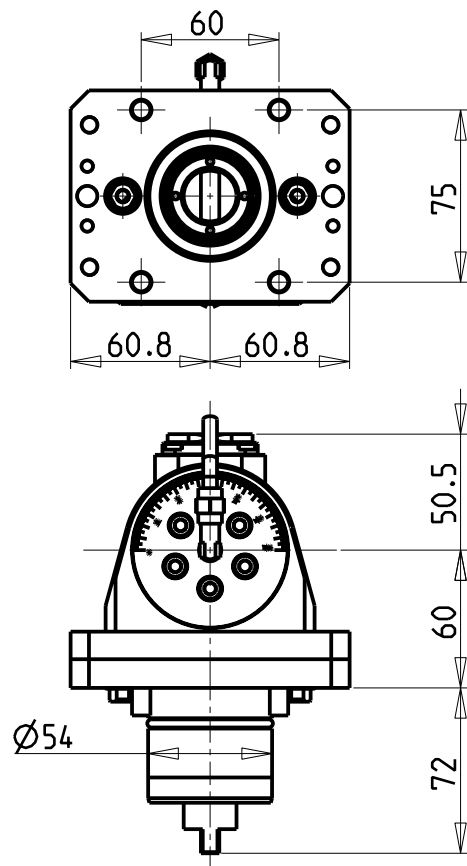
47842 S. GIOVANNI IN M. (RN)

e-mail: mtma@mtmarchetti.com

<http://www.mtmarchetti.com>

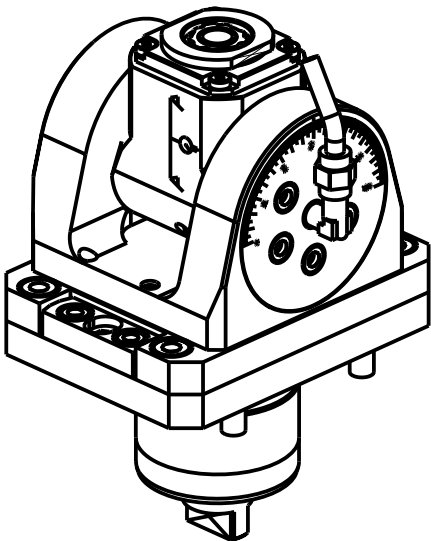
PRODUZIONE MODULI ROTANTI

PAGINA MYA335-3-01



ATTENZIONE - ATTENTION - ACHTUNG

- Per lo smontaggio degli utensili utilizzare sempre la chiave di contrasto come indicato nel manuale d'uso.
- For disassembly of the tools use always the contrast key as mentioned in the user instructions.
- Fuer das Abmontieren der Werkzeuge immer den Gegenschlüssel benutzen wie in der Bedienungsanleitung erwaeht.



Cod. MT	Mandrino Spindle Spindel	I	RPM	Coppia Max Max Torque Max Drehmoment	Reversibile lato mandrino/contromandrino Reversible sub/main spindle side Umkehrbare Spindel-seite/ Gegenspindel-seite	Lubrificazione int. Coolant through Innenkuehlung	Lubrificazione est. Ext. coolant Aussenkuehlung	CHIAVI INCLUSE Keys included Schlüssel inbegriffen			
MYA0120316	ERA16	1:2	12000	8Nm	X	-	X	CHUB19_SP3	CHUB32	CHESL06	CHTAER16ZC
MYA0120416	ERA16	1:2	12000	8Nm	X	P=70bar	X	CHUB19_SP3	CHUB32	CHESL06	CHTAER16ZC

MIYANO

MOD: ABX-51/64 SYY/THY

MODULO MOTORIZZATO ORIENTABILE +/-90° MOLTIPLICATO I=1:2 H=60mm

+/-90° adjustable angle driven tool geared-up I=1:2 H=60mm

Angetriebenes Werkzeug schwenkbar +/-90° uebersezt I=1:2 H=60mm

M.T. srl

Via Casino Albini 480

Tel. 0541/956034-957884

Fax 0541/956341

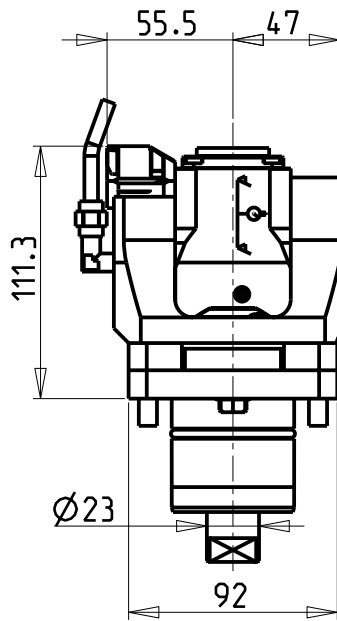
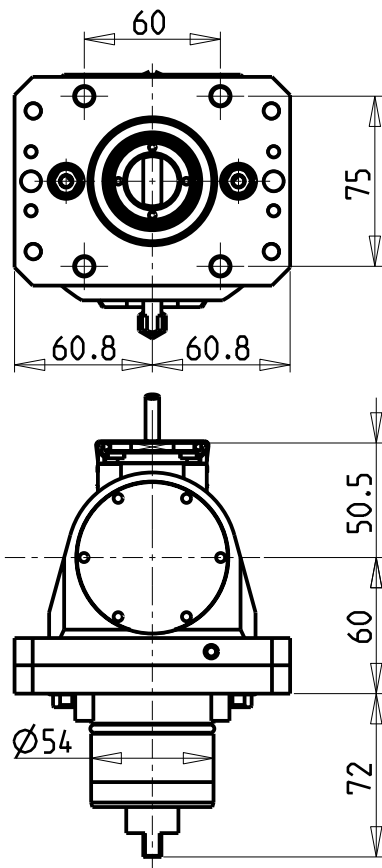
47842 S. GIOVANNI IN M. (RN)

e-mail: mtma@mtmarchetti.com

<http://www.mtmarchetti.com>

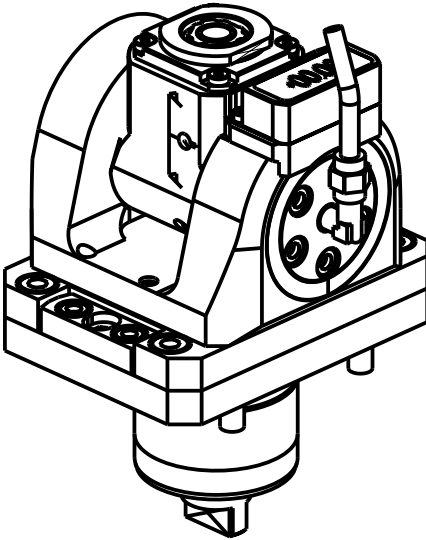
PRODUZIONE MODULI ROTANTI

PAGINA MYA336-3-00



ATTENZIONE - ATTENTION - ACHTUNG

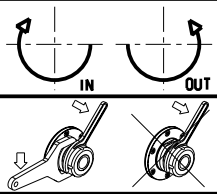
- Per lo smontaggio degli utensili utilizzare sempre la chiave di contrasto come indicato nel manuale d'uso.
- For disassembly of the tools use always the contrast key as mentioned in the user instructions.
- Fuer das Abmontieren der Werkzeuge immer den Gegenschlüssel benutzen wie in der Bedienungsanleitung erwaeht.



Cod. MT	Mandrino Spindle Spindel	I	RPM	Coppia Max Max Torque Max Drehmoment	Reversibile lato mandrino/contromandrino Reversible sub/main spindle side Umkehrbare Spindel-seite/ Gegenspindel-seite	Lubrificazione int. Coolant through Innenkuehlung	Lubrificazione est. Ext. coolant Aussenkuehlung	CHIAVI INCLUDE Keys included Schluessel inbegriffen			
MYA0125316	ERA16	1:2	12000	8Nm	X	-	X	C HUB19_SP3	C HUB32	C HESL06	C HTAER16ZC
MYA0125416	ERA16	1:2	12000	8Nm	X	P=70bar	X	C HUB19_SP3	C HUB32	C HESL06	C HTAER16ZC

MIYANO
MOD: ABX-51/64 SYY/THY

MODULO MOTORIZZATO ORIENTABILE +/-90° MOLTIPLICATO I=1:2 CON NONIO DIGITALE H=60mm
+/-90° adjustable angle driven tool geared-up I=1:2 with digital display H=60mm
Angetriebenes Werkzeug schwenkbar +/-90° uebersetzt I=1:2 mit digital display H=60mm

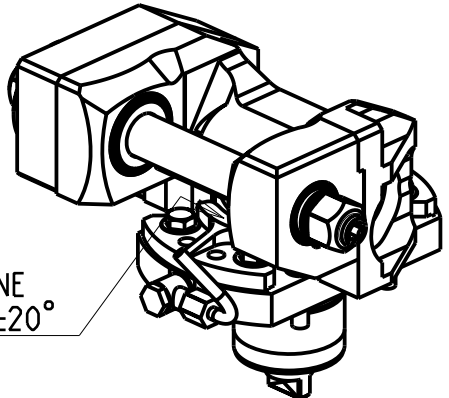
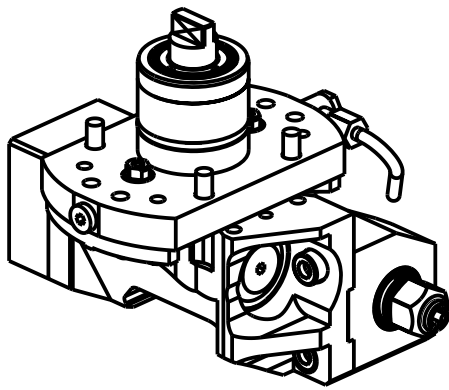
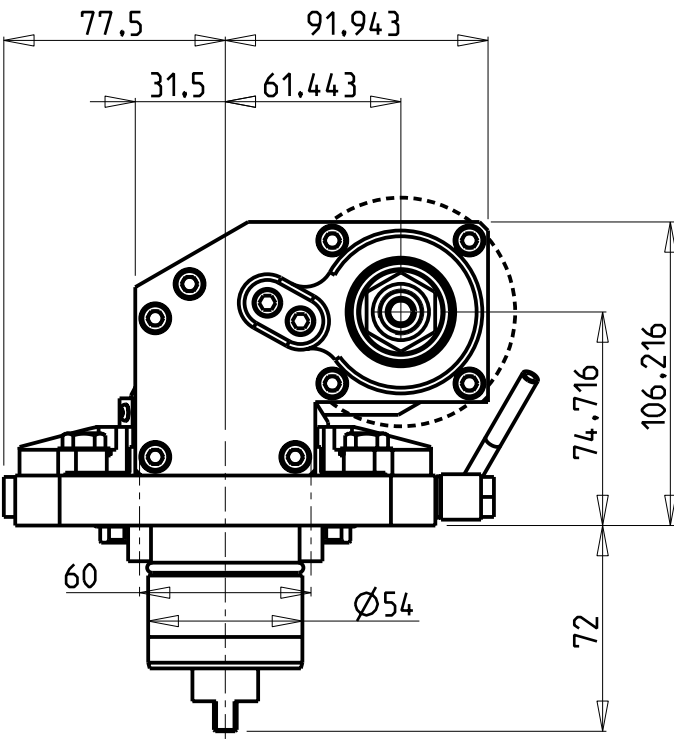
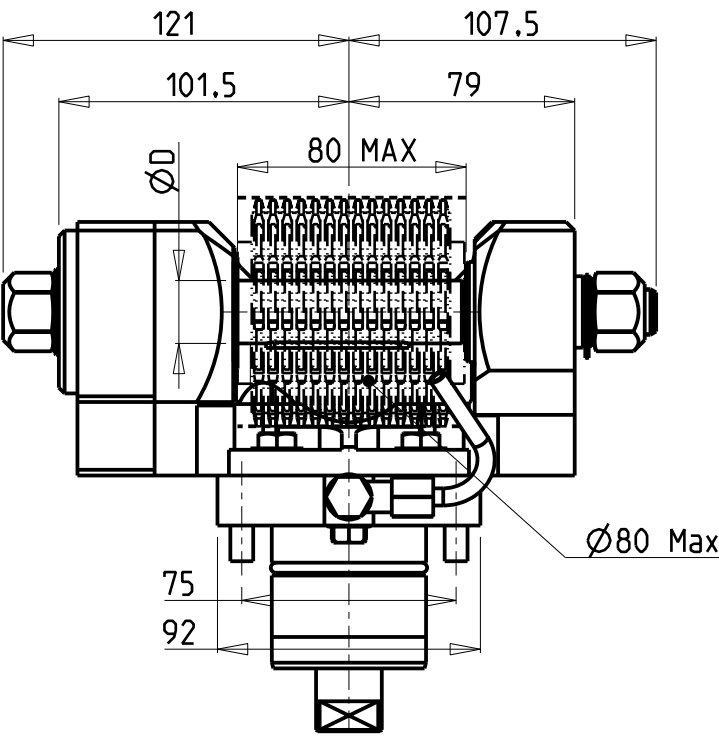


M.T. srl
Via Casino Albini 480
Tel. 0541/956034-957884
Fax 0541/956341
47842 S. GIOVANNI IN M. (RN)
e-mail: mtma@mtmarchetti.com
<http://www.mtmarchetti.com>

PRODUZIONE MODULI ROTANTI



PAGINA MYA336-3-01



INCLINAZIONE
REGOLABILE $\pm 20^\circ$

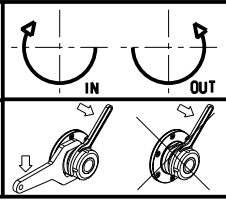
DOTAZIONI - SUPPLIED WITH - AUSSTATTUNG

mm / inch	- N°1 ALBERO + DISTANZIALI - N°1 SHAFT + SPACER - N°1 DORN + ABSTANDSSTUECK
-----------	---

PER ALBERI E DISTANZIALI VEDI PAG. TBL250-1-00
FOR SHAFT END SPACER SEE PAGE TBL250-1-00
FUER DORN UND ABSTANDSSTUECK SEITE TBL250-1-00

Cod. MT	I	RPM	Coppia Max Max Torque Max Drehmoment	Reversibile lato mandrino/controlmandrino Reversible sub/main spindle side Umkehrbare Spindel-seite/ Gegenspindel-seite	Lubrificazione est. Ext. coolant Aussenkuehlung	D (mm)	D (Inch)	CHIAVI INCLUSE Keys included Schluessel inbegriffen			
MYA0131100	1:1	6000	60Nm	X	X	16-22-27-32	3/4"-1"-1 1/4"	CHUB24	CHUB13	CHESL06	CHESL08
MYA0132100	2:1	3000	80Nm	X	X	16-22-27-32	3/4"-1"-1 1/4"	CHUB24	CHUB13	CHESL06	CHESL08

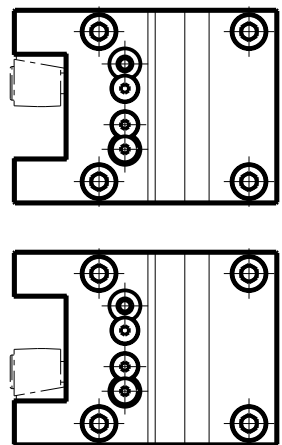
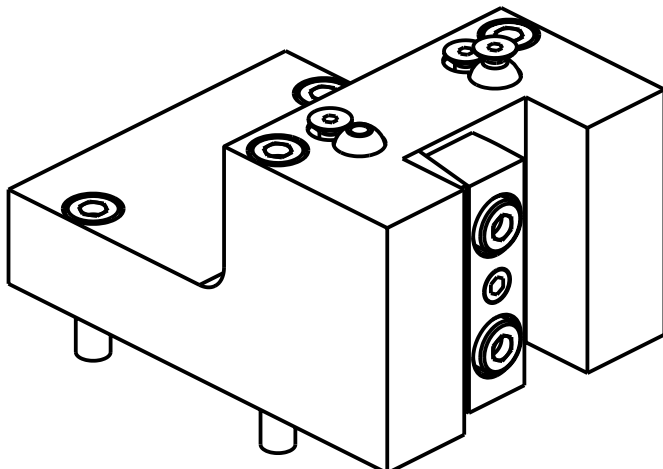
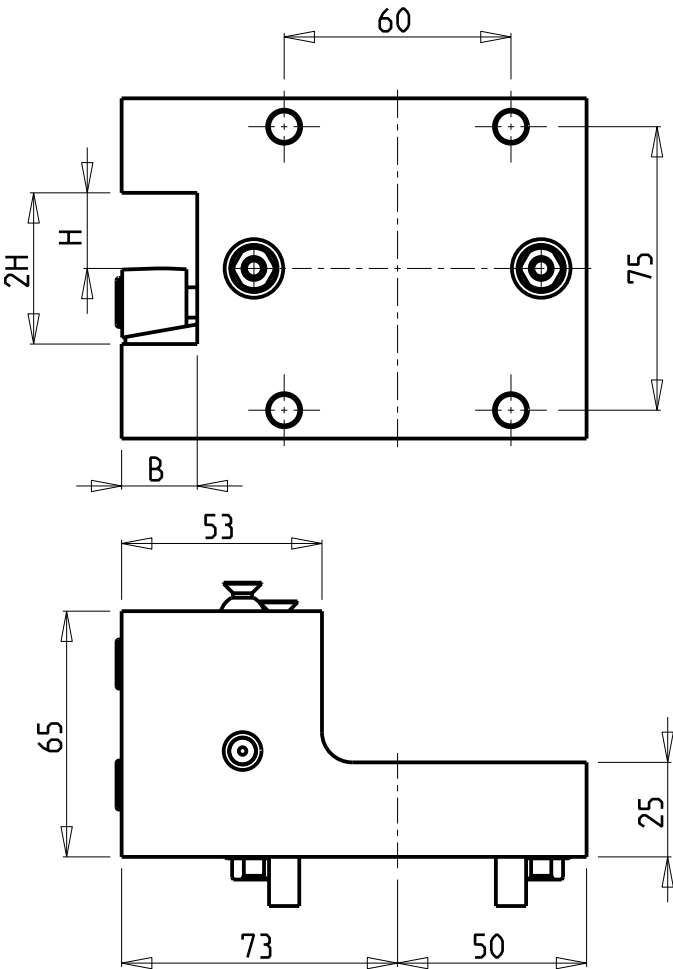
MIYANO
MOD: ABX-51/64 SYY/THY
MODULO MOTORIZZATO PORTACREATORE
Driven gear hobber
Angetriebenes Zahnradwaelzfraes-Werkzeug



M.T. srl
Via Casino Albini 480
Tel. 0541/956034-957884
Fax 0541/956341
47842 S. GIOVANNI IN M. (RN)
e-mail: mtma@mtmarchetti.com
<http://www.mtmarchetti.com>

PRODUZIONE MODULI ROTANTI

PAGINA MYA340-3-00



Cod. MT	Reversibile lato mandrino/contromandrino Reversible sub/main spindle side Umkehrbare Spindel-seite/ Gegenspindel-seite	Misure Dimensions Masse	B	H
MYA0172000	X	mm	20	20

MIYANO
MOD: ABX-51/64 SYY/THY
PORTAUTENSILE RADIALE SINGOLO QD=20mm
Radial single static tool QD=20mm
Radial Single-Werkzeughalter QD=20mm

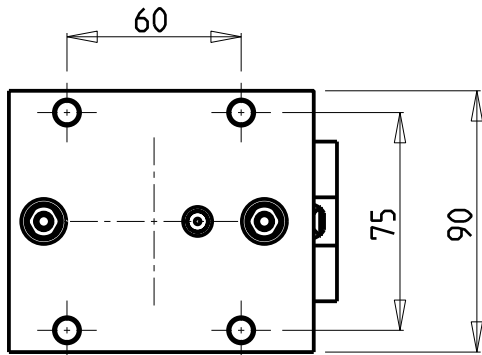
Subject to change without notice.

M.T. srl
Via Casino Albini 480
Tel. 0541/956034-957884
Fax 0541/956341
47842 S. GIOVANNI IN M. (RN)
e-mail: mtma@mtmarchetti.com
<http://www.mtmarchetti.com>

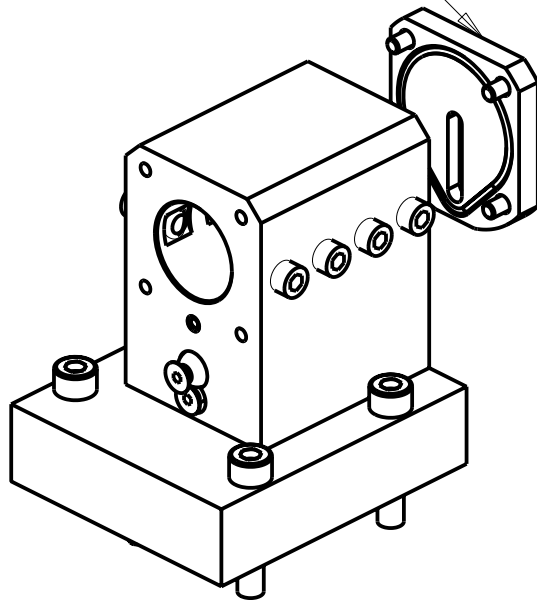
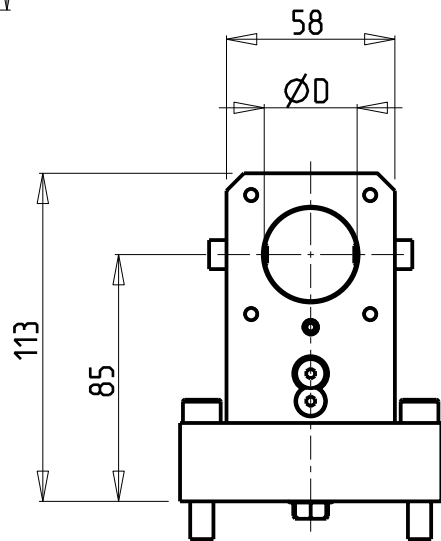
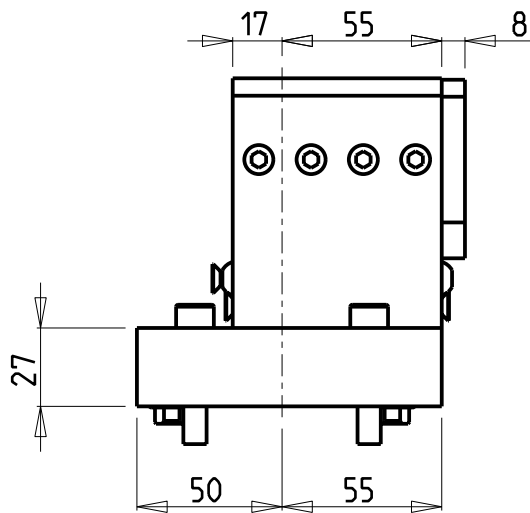
PRODUZIONE MODULI ROTANTI



PAGINA MYA420-3-00



KIT ADDUZIONE INTERNA (OPZIONALE)
KIT FOR INTERNAL COOLANT (OPTIONAL)
KIT FUER INTERNE KUEHLMITTELZUFUHR (OPTIONAL)
Ø32 cod. KIT1000031



Cod. MT	N°Utensili N°Tools N°Werkzeuge	Reversibile lato mandrino/contromandrino Reversible sub/main spindle side Umkehrbare Spindel-seite/ Gegenspindel-seite	Lubrificazione int. opzionale Coolant through optional Innenkuehlung Optional	Lubrificazione est. Ext. coolant Aussenkuehlung	Misure Dimensions Masse	D
MYA0183200	1	X	X	X	mm	32

PER BOCCOLE DI RIDUZIONE VEDI PAG. TBL150-1-00
FOR REDUCING BUSHINGS SEE PAGE TBL150-1-00
FÜR REDUZIERBUCHSE SIEHE SEITE TBL150-1-00

MIYANO
MOD: ABX-51/64 SYY/THY
PORTAUTENSILE ASSIALE ARRETRATO PER BARENO Ø32mm H=85mm
Axial single rear set boring bar holder Ø32mm H=85mm
Axial Bohrhälter zurueckversetzt Ø32mm H=85mm

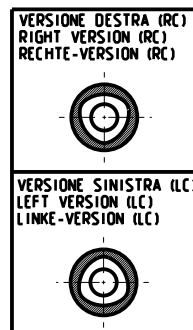
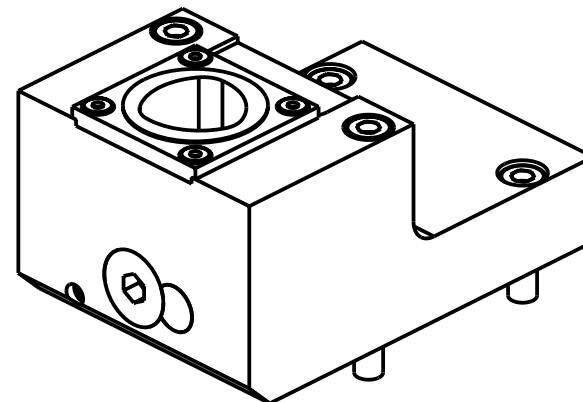
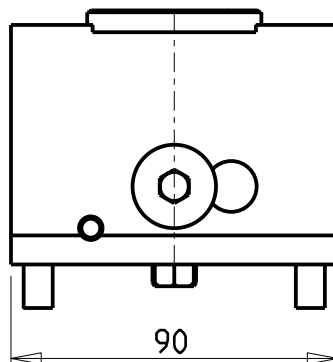
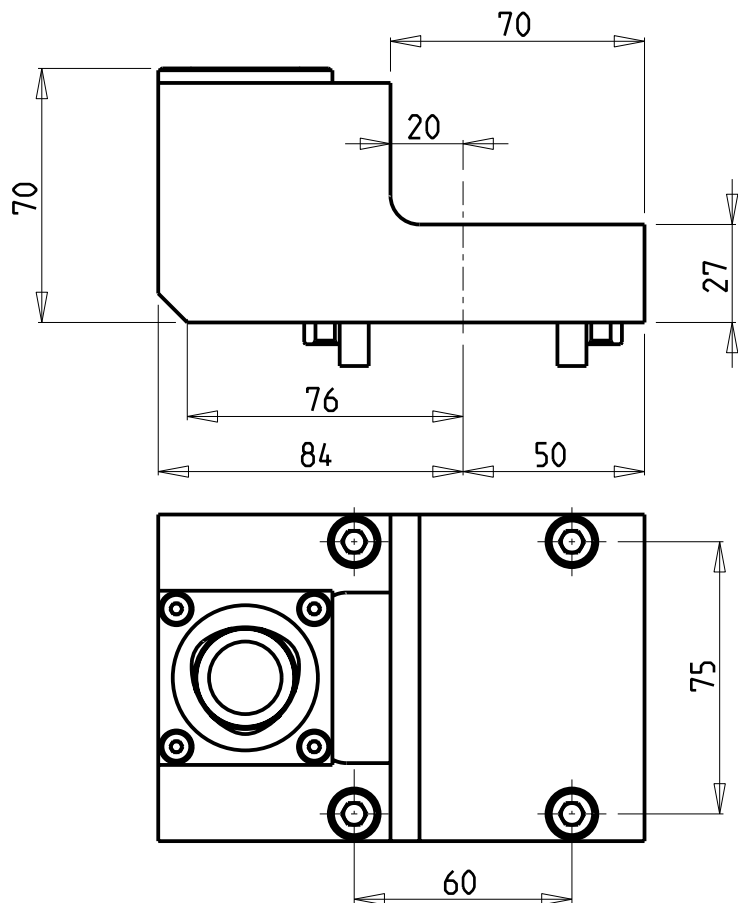
Subject to change without notice.

M.T. srl
Via Casino Albini 480
Tel. 0541/956034-957884
Fax 0541/956341
47842 S. GIOVANNI IN M. (RN)
e-mail: mtma@mtmarchetti.com
<http://www.mtmarchetti.com>

PRODUZIONE MODULI ROTANTI



PAGINA MYA847-3-10



PER ORDINARE LA VERSIONE SX
AGGIUNGERE "LC" AL CODICE IN TABELLA.
ES: MYA0194010 DIVENTA MYA0194010LC

TO ORDER LEFT VERSION
ADD A "LC" IN THE CODE-CHARTS.
EXAMPLE: MYA0194010 BECOMES MYA0194010LC


UM DIE LINKE-VERSION ZU BESTELLEN, BEI DER
ARTIKELBEZEICHNUNG "LC" HINZUFUEGEN.
BEISPIEL: MYA0194010 WIRD DANN MYA0194010LC

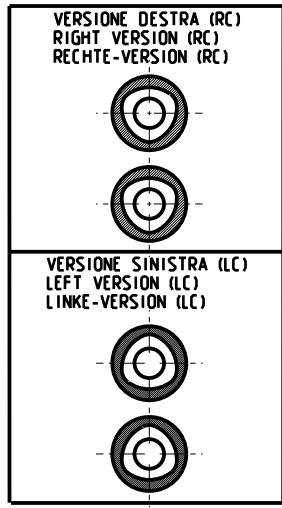
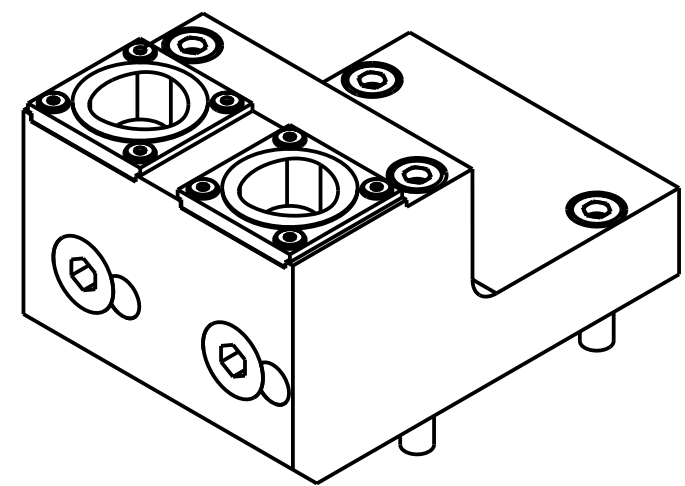
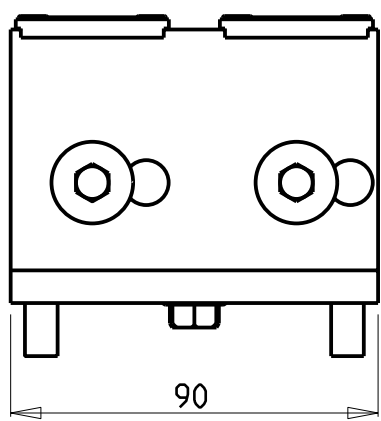
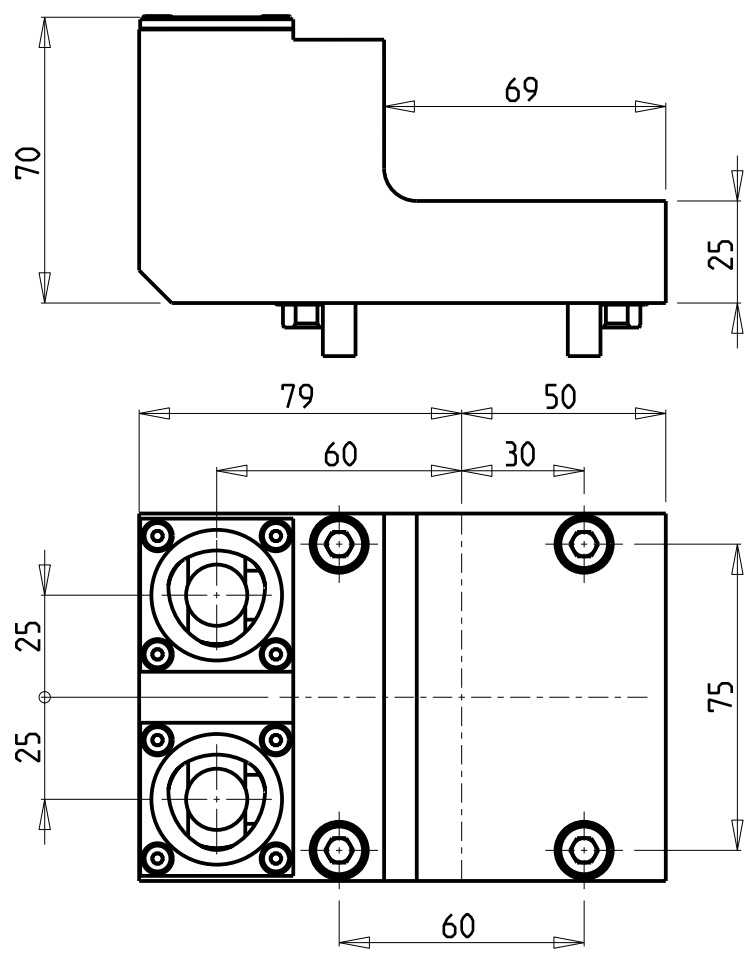
Cod. MT	N°Utensili N°Tools N°Werkzeuge	Lubrificazione int. Coolant through Innenkuehlung	Lubrificazione est. Ext. coolant Aussenkuehlung	Reversibile lato mandrino/contromandrino Reversible sub/main spindle side Umkehrbare Spindelseite/ Gegenspindelseite	TAGLIA Size Masse
MYA0194010	1	X	X	X	C4

MIYANO
MOD: ABX-51/64 SYY/THY
PORTAUTENSILE RADIALE SINGOLO MT CAPTO
Radial single static tool MT CAPTO
Radial Single-Werkzeughalter MT CAPTO

Subject to change without notice.

M.T. srl
Via Casino Albini 480
Tel. 0541/956034-957884
Fax 0541/956341
47842 S. GIOVANNI IN M. (RN)
e-mail: mtma@mtmarchetti.com
<http://www.mtmarchetti.com>

PRODUZIONE MODULI ROTANTI

PAGINA MYA420-C-40



PER ORDINARE LA VERSIONE SX
AGGIUNGERE "LC" AL CODICE IN TABELLA.
ES: MYA0203220 DIVENTA MYA0203220LC

TO ORDER LEFT VERSION
ADD A "LC" IN THE CODE-CHARTS.
EXAMPLE: MYA0203220 BECOMES MYA0203220LC

UM DIE LINKE-VERSION ZU BESTELLEN, BEI DER
ARTIKELBEZEICHNUNG "LC" HINZUFUEGEN.
BEISPIEL: MYA0203220 WIRD DANN MYA0203220LC

Cod. MT	N°Utensili N°Tools N°Werkzeuge	Lubrificazione int. Coolant through Innenkuehlung	Lubrificazione est. Ext. coolant Aussenkuehlung	TAGLIA Size Masse
MYA0203220	2	X	X	C3

MIYANO MOD: ABX-51/64 SYY/THY PORTAUTENSILE RADIALE SOVRAPPOSTO MT CAPTO Radial single side twin static tool MT CAPTO Radial Werkzeughalter ueberlagert MT CAPTO	M.T. srl Via Casino Albini 480 Tel. 0541/956034-957884 Fax 0541/956341 47842 S. GIOVANNI IN M. (RN) e-mail: mtma@mtmarchetti.com http://www.mtmarchetti.com	PRODUZIONE MODULI ROTANTI  PAGINA MYA440-C-30
--	--	--