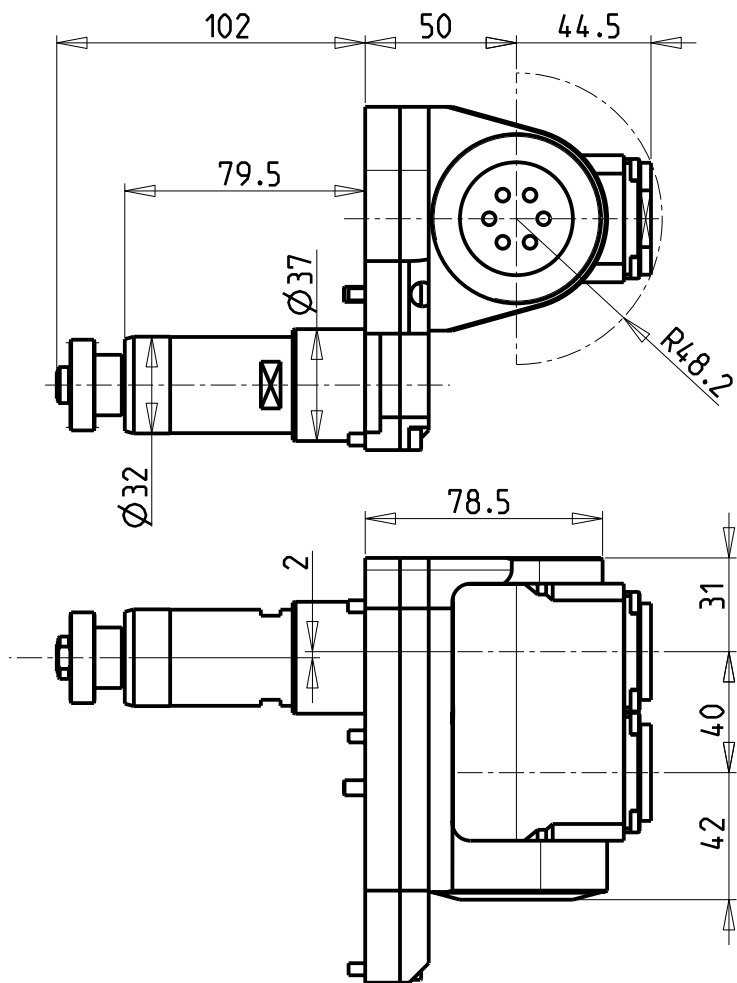
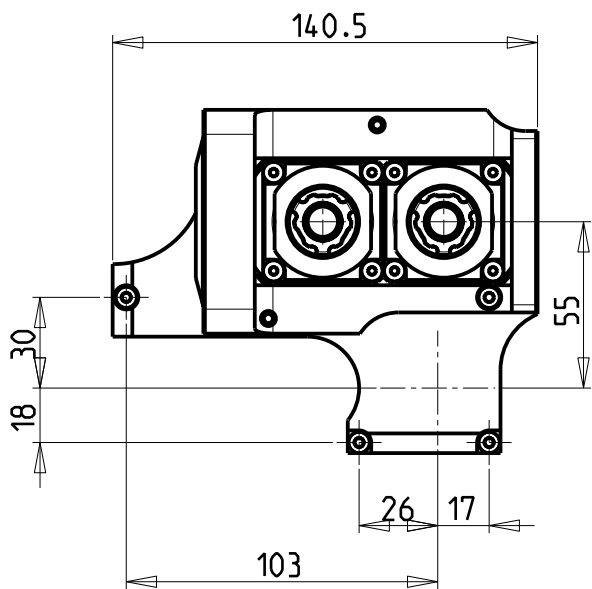


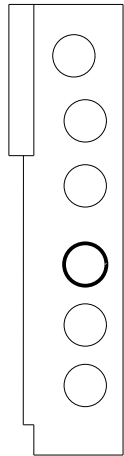
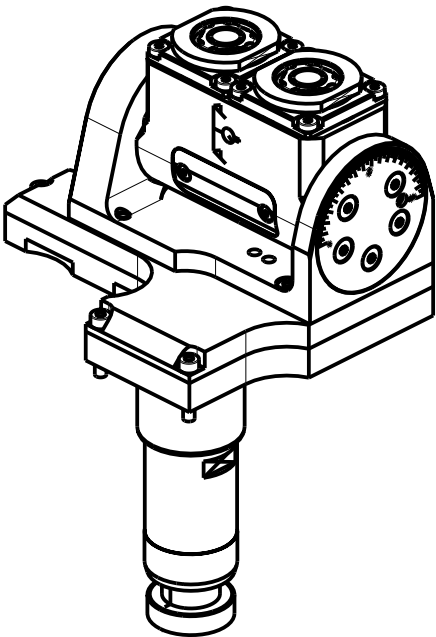
		PAGINA Page Seite
MODULO MOTORIZZ. ORIENTABILE DOPPIO $\pm 90^\circ$ $\pm 90^\circ$ double adjustable angle driven tool Doppel-Angetriebenes Werkzeug schwenkbar $\pm 90^\circ$		NOM338.2.00
MODULO MOTORIZZATO PORTACREATORE Driven gear hobber Angetriebenes Zahnradwaelzfraes-Werkzeug		NOM340.2.00
MODULO MOTORIZZATO TURBINATORE RIDOTTO I=2:1 Driven whirling tool geared-down I=2:1 Gewindewirbeleinrichtung untersetzt I=2:1		NOM370.2.00

Distributeur/ importateur : Crylax 0033 450 960920 - info@crylax.com



ATTENZIONE - ATTENTION - ACHTUNG

- Per lo smontaggio degli utensili utilizzare sempre la chiave di contrasto come indicato nel manuale d'uso.
- For disassembly of the tools use always the contrast key as mentioned in the user instructions.
- Fuer das Abmontieren der Werkzeuge immer den Gegenschlüssel benutzen wie in der Bedienungsanleitung erwaeht.



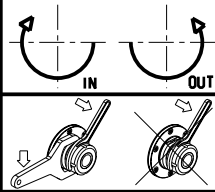
T13

Cod. MT	Mandrino Spindle Spindel	I	RPM	Lubrificazione est. Ext. coolant Aussenkuehlung	CHIAVI INCLUSE Keys included Schluessel inbegriffen		
NMR0030216	ERA16	1:1	6000	X	CHUB32	CHUB19_SP3	CHTAER16ZC

NOMURA
MOD: NN32YB2

MODULO MOTORIZZATO ORIENTABILE DOPPIO ±90°
±90° double adjustable angle driven tool
Doppel-Angetriebenes Werkzeug schwenkbar ±90°

Subject to change without notice.



M.T. srl

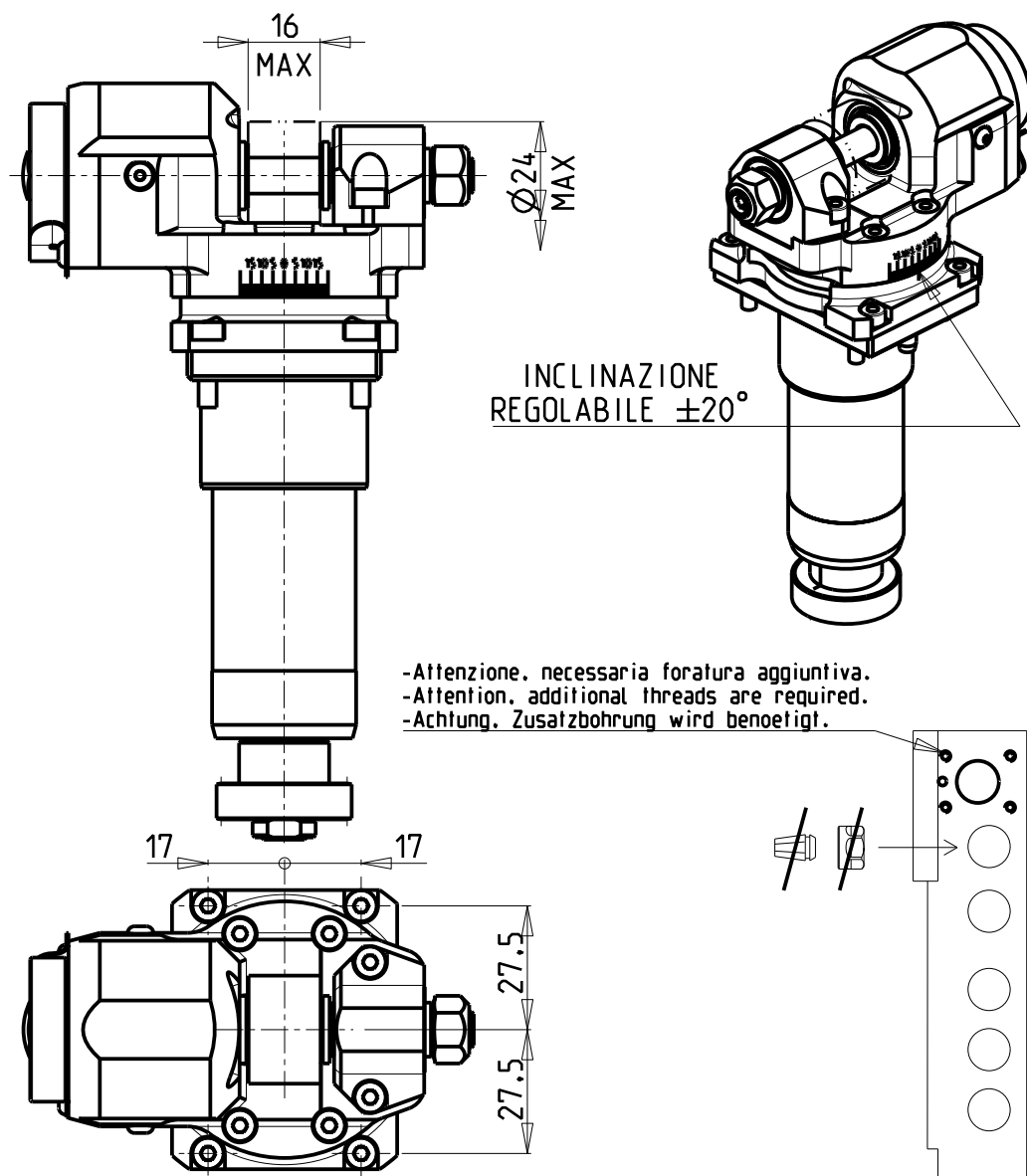
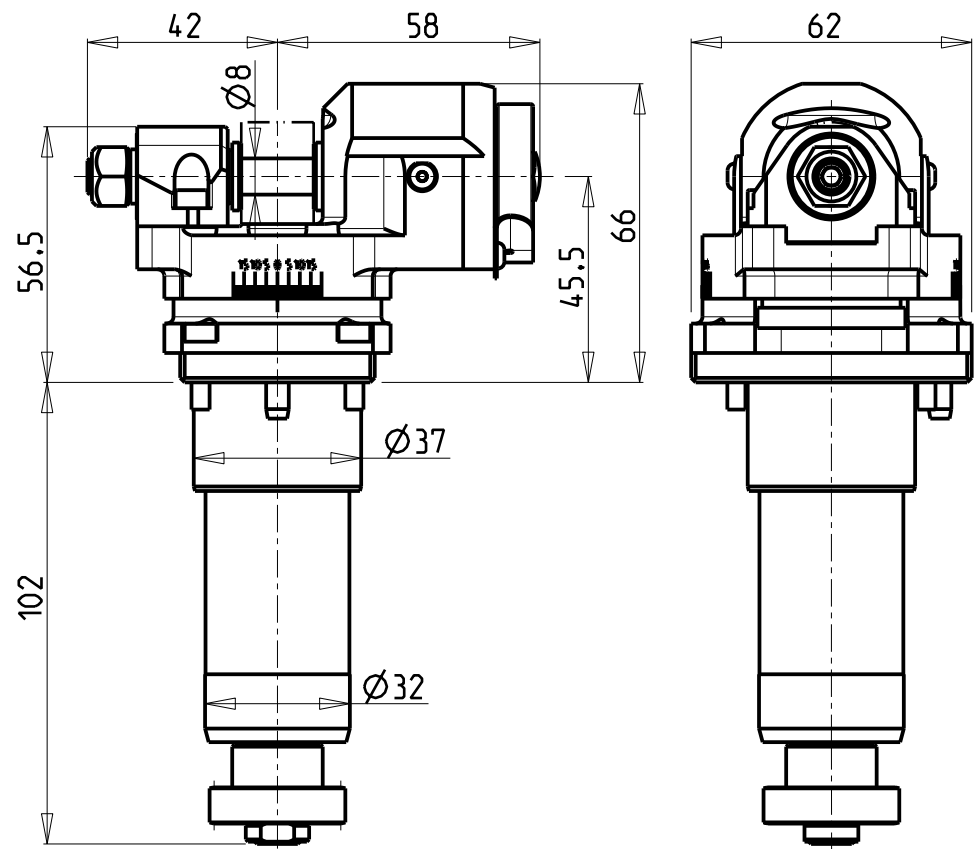
Via Casino Albini 480
Tel. 0541/956034-957884
Fax 0541/956341

47842 S. GIOVANNI IN M. (RN)
e-mail: mtma@mtmarchetti.com
<http://www.mtmarchetti.com>

PRODUZIONE MODULI ROTANTI

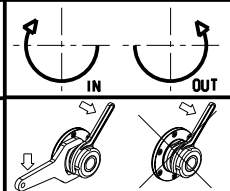


PAGINA NOM338-2-00



Cod. MT	I	RPM max	Lubrificazione est. Ext. coolant Aussenkuehlung	CHIAVI INCLUDE Keys included Schluessel inbegriffen	
NMR0080100	1:1	6000	X	CHESL04	CHUB13

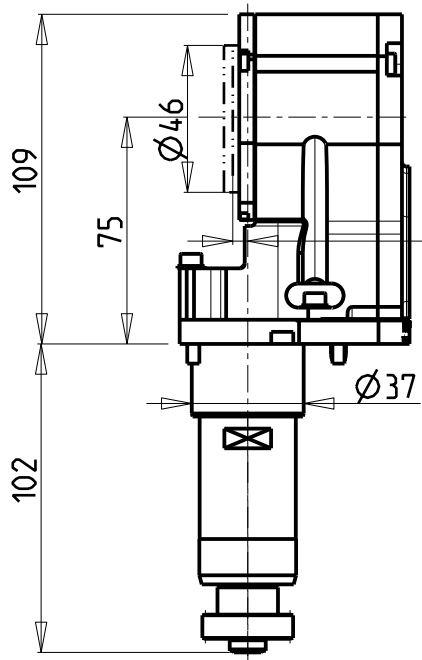
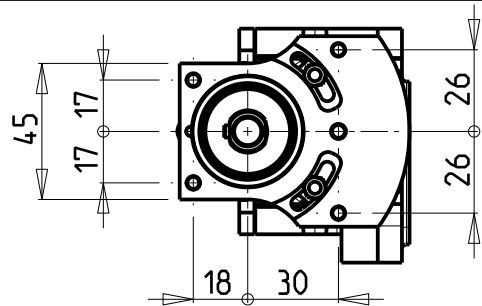
NOMURA
MOD: NN32YB2
MODULO MOTORIZZATO PORTACREATORE
Driven gear hobber
Angetriebenes Zahnradwaelzfraes-Werkzeug
Subject to change without notice.



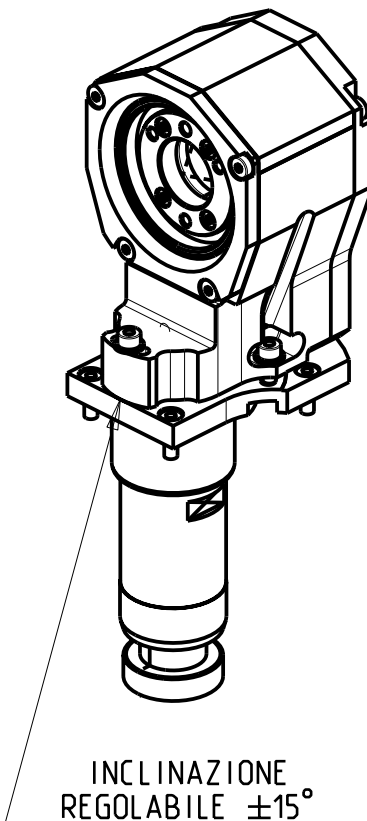
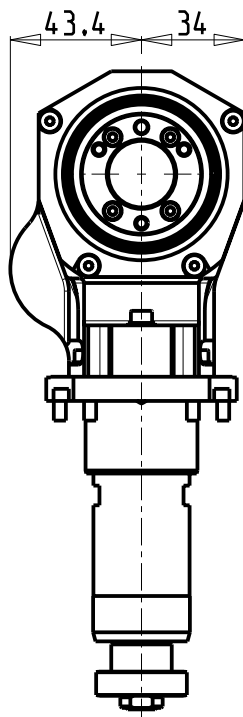
M.T. srl
Via Casino Albini 480
Tel. 0541/956034-957884
Fax 0541/956341
47842 S. GIOVANNI IN M. (RN)
e-mail: mtma@mtmarchetti.com
<http://www.mtmarchetti.com>

PRODUZIONE MODULI ROTANTI

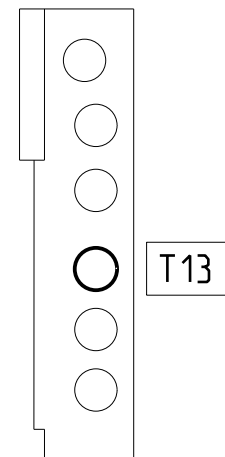
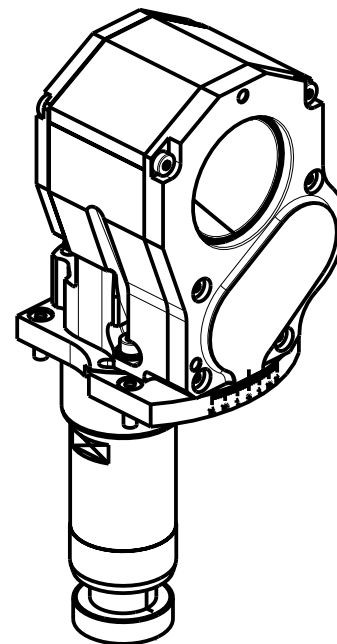
PAGINA NOM340-2-00



4
Piano Inserti
Inserts Surface
Einsatze Flaechе



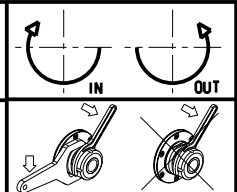
INCLINAZIONE
REGOLABILE $\pm 15^\circ$



Cod. MT	I	RPM	Lubrificazione est. Ext. coolant Aussenkuehlung
NMR0070112	2:1	3000	X


Fresa non inclusa: Milling-cutter not included: Fraese nicht inbegriffen:
SANDVIK Coromill 325 cod. 325-12AP40-16M

NOMURA
MOD: NN32YB2
MODULO MOTORIZZATO TURBINATORE RIDOTTO I=2:1
Driven whirling tool geared-down I=2:1
Gewindewirbeleinrichtung untersetzt I=2:1



M.T. srl
Via Casino Albini 480
Tel. 0541/956034-957884
Fax 0541/956341
47842 S. GIOVANNI IN M. (RN)
e-mail: mtma@mtmarchetti.com
<http://www.mtmarchetti.com>

PRODUZIONE MODULI ROTANTI



PAGINA NOM370-2-00

Distributeur/ importateur : Crylax 0033 450 960920 - info@crylax.com